

Vista 3

AL REEM ISLAND

מנזל תחזי
במזיא ו ראה לא
תזאהי



בונים בתים
באלגנטיות ואיכות
ללא פשרות



ريبورتاج العقارية

تمثل شركة ريبورتاج العقارية واحدةً من أكبر مطوري العقارات الخاصة في دولة الإمارات العربية المتحدة بمشروعات قائمة في أبوظبي ودبي و مصر و تركيا و المغرب، و مشاريع دولية أخرى ضمن الخطة.

وتركز الشركة في هدفها المتمثل في تقديم حلول إسكان مبتكرة وحديثة وبأسعار في المتناول، وهي حلول من شأنها أن توفر قيمة متميزة.

تتمثل مهمة ريبورتاج العقارية في أن تكون أولى شركات العقارات الأكثر

ثقة في دولة الإمارات العربية المتحدة، وذلك من خال تطوير وتوفير منازل تجمع بين الأناقة و العملية و متاحة للجميع، و تمنح ساكنيها الشعور بالانتماء. نتطلع بثقة إلى الأعوام القادمة ونطمح إلى توسيع نطاق أعمالنا العقارية على مستوى العالم.

חברת רפורטאג'

חברת Reportage Properties היא אחת החברות הפרטיות הגדולות ביותר לפיתוח קרקעות ונדל"ן באיחוד האמירויות, עם פרויקטים באיחוד האמירויות, בטורקיה ובמרוקו, ופרויקטים בינלאומיים נוספים שנמצאים בשלבי פיתוח.

חזון החברה, ועיקר התמקדותה, הוא לספק פתרונות דיור חדשניים ומודרניים במחירים אטרקטיביים, שלא רק מציעים למשקיעים תשואה מרשימה, אלא גם מספקים לרוכשים מקום מחייה בטוח.

אנחנו שואפים למצב את עצמנו כאחת מחברות הנדל"ן המהימנות ביותר באיחוד האמירויות על ידי פיתוח ושיווק של פתרונות מגורים אלגנטיים במחירים נוחים, והענקה של תחושת שייכות. אנחנו נרגשים לקראת ההתפתחויות בשנים הקרובות, ומקווים להרחיב את עסקי הנדל"ן שלנו ברחבי העולם.



האי אלים

جزيرة الريم

بموقعها المتميز على بعد 300 متر من الساحل الشمالي الشرقي لأبو ظبي، توفر جزيرة الريم رفاهية الحياة في قلب المدينة وبعيداً عن الصخب.

مع وجود ثلاثة جسور تربط جزيرة الريم بوسط مدينة أبوظبي، فإن الموقع المميز للمجتمع المطل على الواجهة البحرية و الذي يسهل الوصول إليه يجعلها واحدة من أكثر الأماكن رواجاً للعيش في عاصمة الإمارات العربية المتحدة. بالإضافة إلى قربها من وسط المدينة، فهي تقع أيضاً بالقرب من الحي المالي - جزيرة المارية ، ومركز الثقافة-جزيرة السعديات، وجميع الطرق الرئيسية.

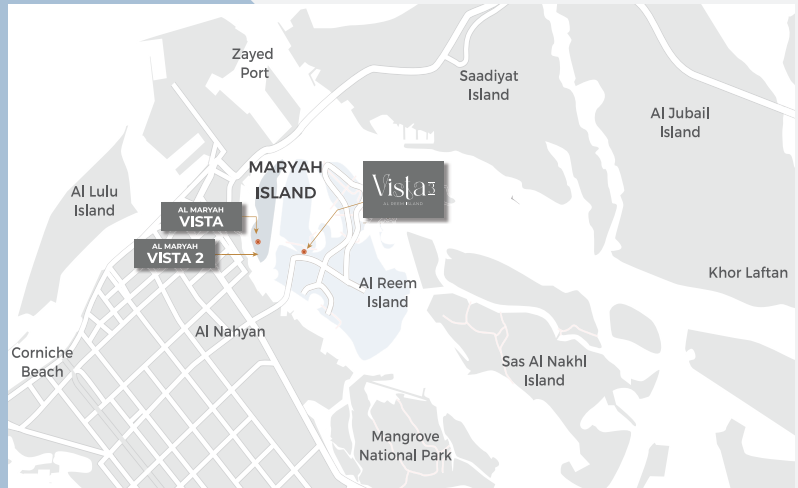
تم تصنيف جزيرة الريم كواحدة من أفضل المجتمعات للعيش والاستثمار في أبو ظبي، بتبنيها أسلوب حياة «العمل واللعب والعيش».

האי אל רים, ששוכן במרחק של 300 מטרים מהחוף הצפון-מזרחי של אבו דאבי, מציע את היוקרה והיתרונות שמאפיינים את חיי העיר, אך ללא הרעש וההמולה.

הודות לשלושה גשרים שמחברים בין האי למרכז אבו דאבי, המיקום הנגיש של הקהילה השוכנת על קו המים הופך אותה לאחד המקומות הפופולריים ביותר בבירת איחוד האמירויות. נוסף על קירבתו למרכז העיר, האי גם שוכן בסמוך לאזור הפיננסי – האי אל מאריה איילנד, המרכז התרבותי באי סאדיאט איילנד וכל צירי התחבורה הראשיים.

האי אל רים נחשב לאחת הקהילות הטובות ביותר למגורים ולהשקעה באבו דאבי, ומאופיין באורח חיים מאוזן בין עבודה, הנאה וחיי משפחה.





في قلب كل شيء בלב העניינים

קניון גלריה מול	9 דקות הליכה אל
מסגד אל עזיז	8 דקות הליכה אל
קניון אל רים מול	3 דקות נסיעה אל
קניון אבו דאבי מול	3 דקות נסיעה אל
הסורבון, סניף אבו דאבי	9 דקות נסיעה אל
דלמה פארק	9 דקות נסיעה אל
אל רים סנטרל פארק	10 דקות נסיעה אל
תחנת האוטובוסים המרכזית של אבו דאבי	10 דקות נסיעה אל
חוף אבו דאבי	11 דקות נסיעה אל
מוזיאון הלובר, סניף אבו דאבי	13 דקות נסיעה אל



AL MARYAH ISLAND

- Four seasons Hotel
- Galleria Mall
- Rosewood AD Hotel
- Cleveland Clinic Abu Dhabi

Vista 3
AL REEM ISLAND

AL REEM ISLAND

Al Aziz Mosque

Al Reem Mall

Sorbonne University AD

Reem Hospital

Reem Hills

TAMOUH

ڦيستا 3 جزيرة الريم

في واحدة من أكثر الوجهات رواجاً في أبو ظبي وبقعة ساحرة في قلب العاصمة، يطل ڦيستا 3 كتحفة فنية من الحداثة و جماليات التصميم على الواجهة البحرية مباشرة. و باتباعه لنهج أبوظبي المستقبلي، يوفر هذا المبنى الشاهق نمط الحياة الكامل لجزيرة الريم برفاهية وحداثة و متعة في تناول الجميع، حيث كل يوم هو الأفضل.

VISTA 3 האי אל רים

פרויקט Vista 3, ששוכן באחד מהיעדים הנחשקים ביותר באבו דאבי, בנקודה קסומה בלב עיר הבירה, שובה את העין כיצירת אומנות של מודרניזם ואסתטיקה ממש על קו החוף. בהתאם לגישה העתידנית שמאפיינת את אבו דאבי, גורד השחקים המרהיב הזה מספק את חוויית סגנון החיים הטיפוסית של האי, עם יוקרה, מודרניות והנאה מכול עבר. פה, כל יום הוא היום הכי טוב בחייכם.





حياة تضع معايير
الفخامة، في مبنى شاهق
الارتفاع يحتضن الأفق
الملون لجزيرة الريم

איכות חיים ברמה
גבוהה, בגורד שחקים
שמשקיף על האופק
הססגוני של האי





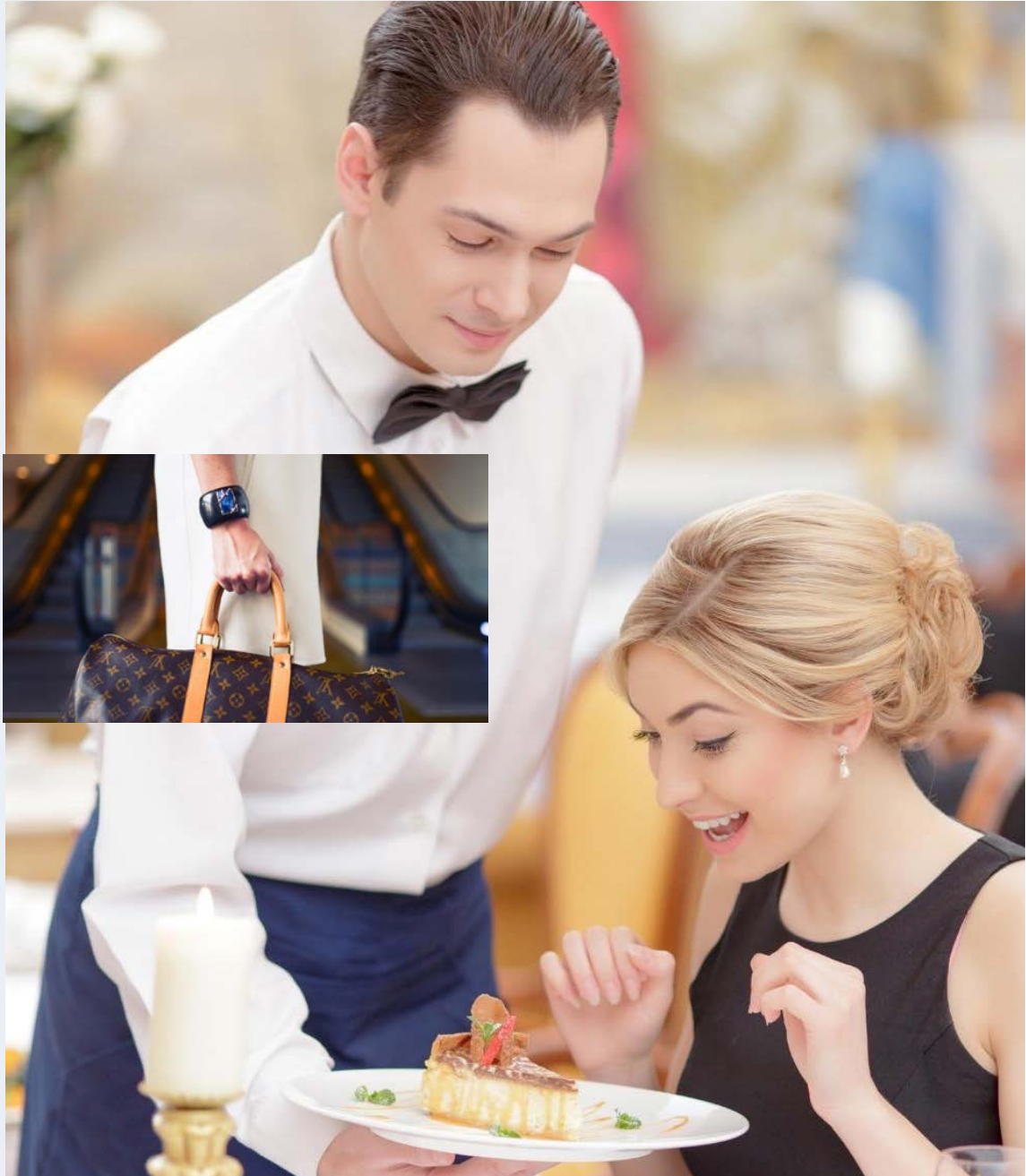


المستقبل الآن أقرب و العالم بأكمله بين يديك

استمتع بأفضل تجارب التسوق و الترفيه و أرقى المطاعم في
الريم مول -أكبر حديقة تليج في العالم
و اطلع على كل جديد في الغاليريا جزيرة المارية و أبو ظبي مول
و صحتك في أيد أمينة مع كليفلاند كلينك أبو ظبي- رعاية
صحية بمستوى عالمي على بعد خطوات منك
و عش رفاهية الضيافة الاستثنائية في أرقى سلاسل الفنادق بأبو
ظبي - فورسيزونز و روزوود أبو ظبي و غيرهما

כאן, העתיד קרוב מאי פעם, והעולם כולו נמצא במרחק נגיעה

אתם מוזמנים ליהנות מחוויות הקנייה, מסעדות הגורמה
והבידור הטובות ביותר בקניון אל רים מול - שכולל גם את
אטרקציית פארק השלג הגדול ביותר בעולם
לחלופין, תוכלו לבלות גם בגלריה אל מאריה איילנד או בקניון
אבו דאבי
בריאות מעל הכול - ומרפאת קליבלנד קליניק שמספקת
שירותי בריאות ברמה עולמית שוכנת במרחק דקות ספורות
ולקינוח, אתם מוזמנים ליהנות מחוויית האירוח היוקרתית
במלון פור סיזנס אבו דאבי, מלון רוזווד אבו דאבי או רשתות
המלונות המובילות האחרות שפועלות במקום

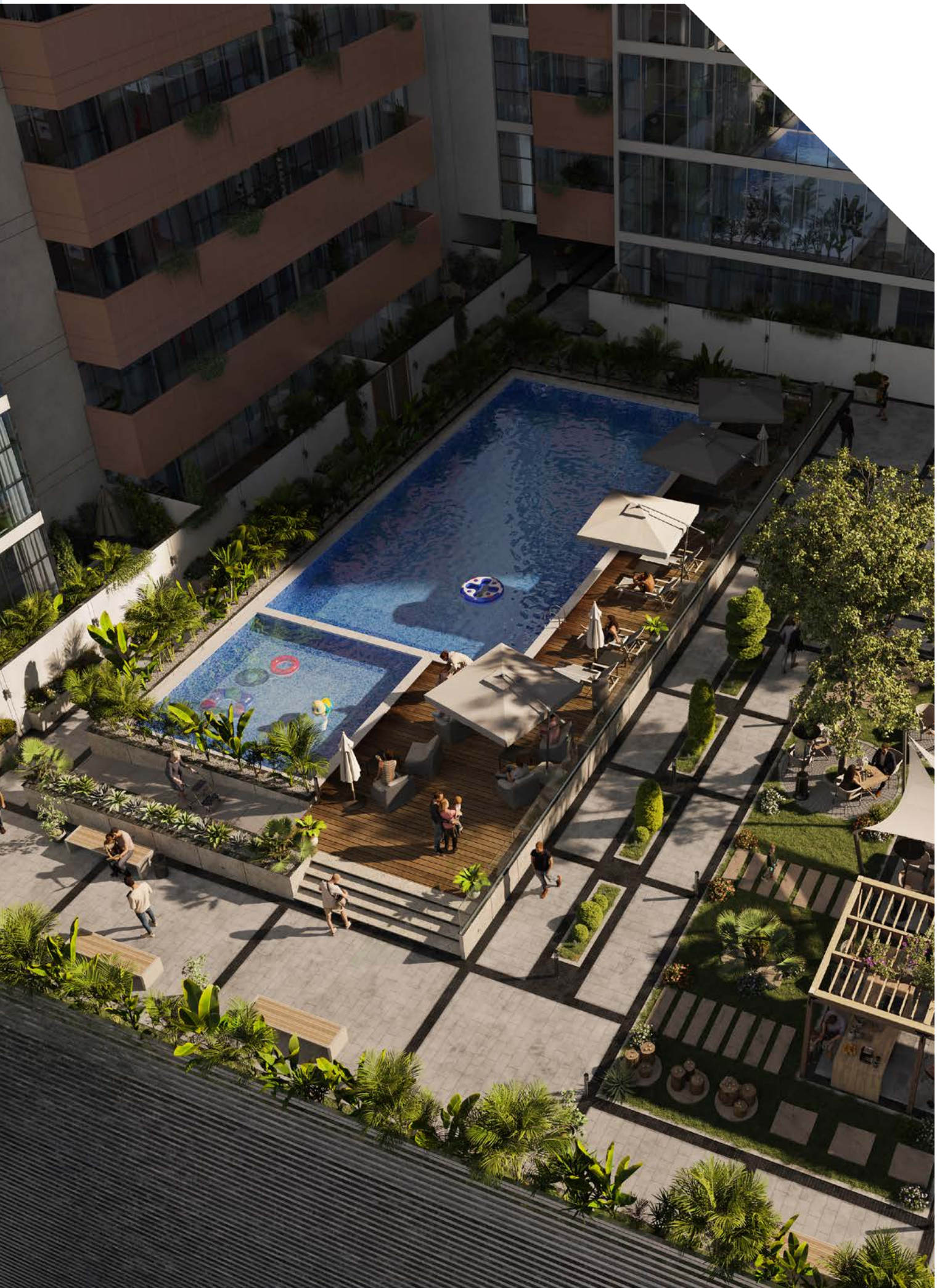




جنة من الجمال على
الواجهة المائية و
إطلالة استثنائية
على اللون الأزرق

גן עדן
על קו החוף,
עם נוף כחול
מכול עבר





انغمس في تجربة معيشية تشبه المنتجات

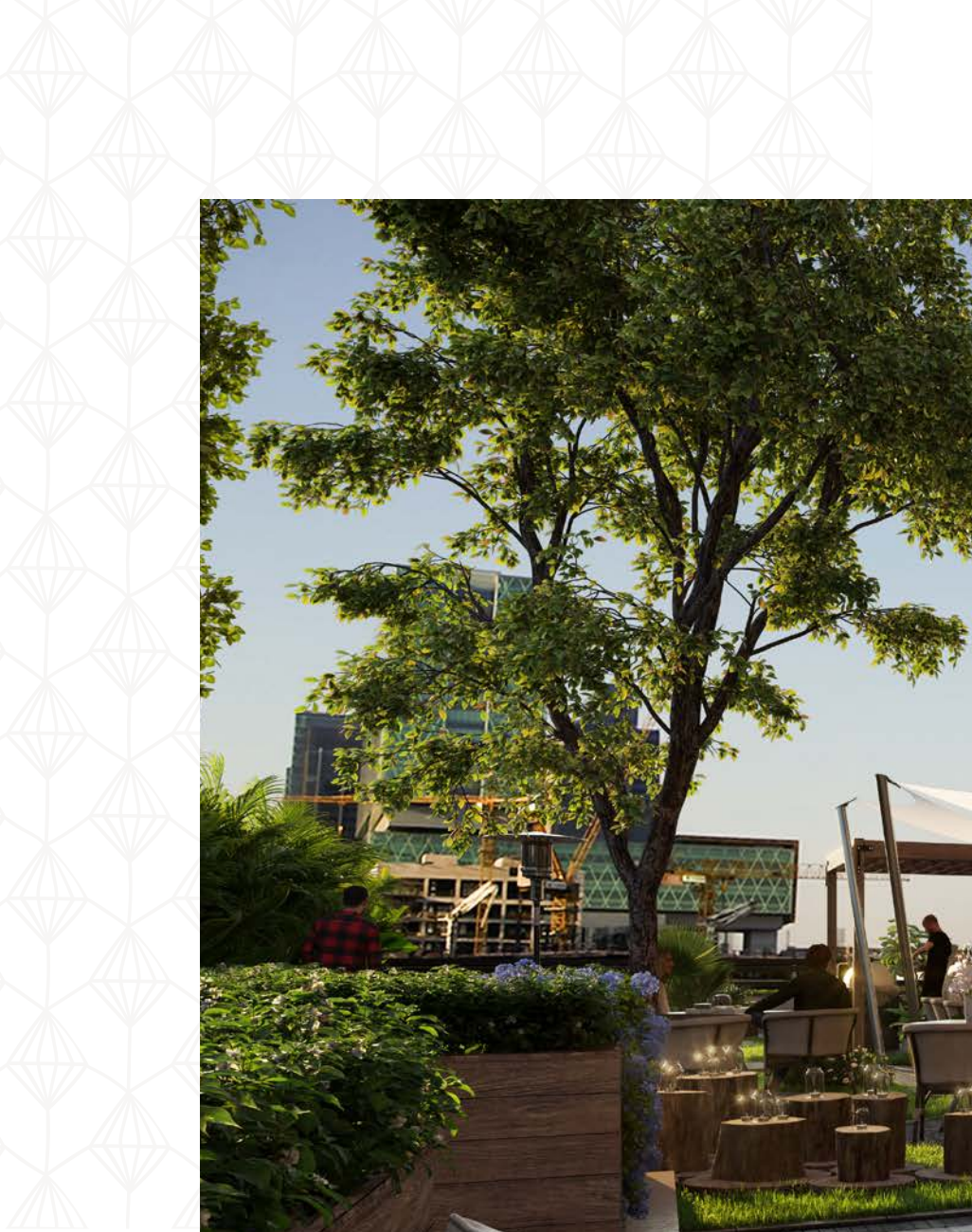
صالة ألعاب رياضية،
مساحات مفتوحة، و
حمامات سباحة فيروزية

להתפנק בחוויית
מגורים בסגנון
אתר נופש

חדר כושר, חללים
פתוחים ובריכות
שחייה צלולות









שפע של אור
שמש וחללים
מפנקים להנאה
מרגעי אושר

إضاءة طبيعية و مساعدات
تنطق بالأناقة و
الدفء لتحضن
أوقاتك
السعيدة





בית מיוחד בדיוק כמוכם

שילוב מעורר השראה
של גימורים מתוחכמים
ופרטים מודרניים
בהתאמה אישית





تفرد تام و منزل مستوحى منك

مزيج ملهم من أرقى لمسات
التشطيب و تفاصيل عصرية
صنعت خصيصاً لأجلك

יוקרה טהורה עם
אסתטיקת עיצוב
מדויקת





الرفاهية كما يجب أن تكون
و روعة جماليات التصميم





מאפייני יחידות המגורים

- שרפות / תרסאות حسب مخطط الوحدة
- خزائن مطبخ وكونترتوب
- حمامات مكسوة بالكامل وأجنحة وحمامات للضيوف حيثما كان ذلك متاحا
- نوافذ زجاجية مزدوجة
- قمر صناعي رئيسي ووصلات ألياف ضوئية
- إنترنت عالي السرعة
- تكييف هواء مركزي
- وحدات تخزين و مرايا
- دش وحوض استحمام في كل حمام
- مرפסות בגדלים משתנים בהתאם למפרט של כל דירה
- ארונות ומשטחי עבודה במטבח
- ריצוף מלא בכל חדרי הרחצה והשירותים
- חלונות בזיגוג כפול
- חיבור ללוויין וחיבור בסיבים אופטיים
- לאינטרנט במהירות גבוהה
- מיזוג אוויר מרכזי
- מקלחת בכל חדר רחצה



صالة ألعاب رياضية
חדר כושר



ردهة كبيرة
לובי גדול



منطقة للشواء
אזור למנגל



مناطق جلوس مغطاة
אזורי ישיבה מוצלים



مواقف سيارات مغطاة
חניות מקורות



مصاعد كبيرة
מעליות
גדולות



مناطق خضراء
אדריכלות נוף וצמחייה
מטופחת



مسبح للأطفال
בריכת שחייה לילדים
مسبح للكبار
בריכת שחייה למבוגרים



مرافق و خدمات
بمستوى عالمي

מתקנים ושירותים
ברמה עולמית



תמהיל הדירות

דירות שני חדרים	163	שقة غرفة واحدة
דירות שלושה חדרים	165	شقة غرفتين
דירות ארבעה חדרים	143	شقة ثلاث غرف
דירות חמישה חדרים	150	شقة أربع غرف
דירות שישה חדרים	01	شقة خمس غرف

סה"כ דירות: 622

תفاصيل المشروع

مساحة الأرض (م²): 4,771 מ"ר
إجمالي الارتفاع (م): 170.4 מ'

פרטי הפרויקט

שטח מגרש :
גובה כולל :

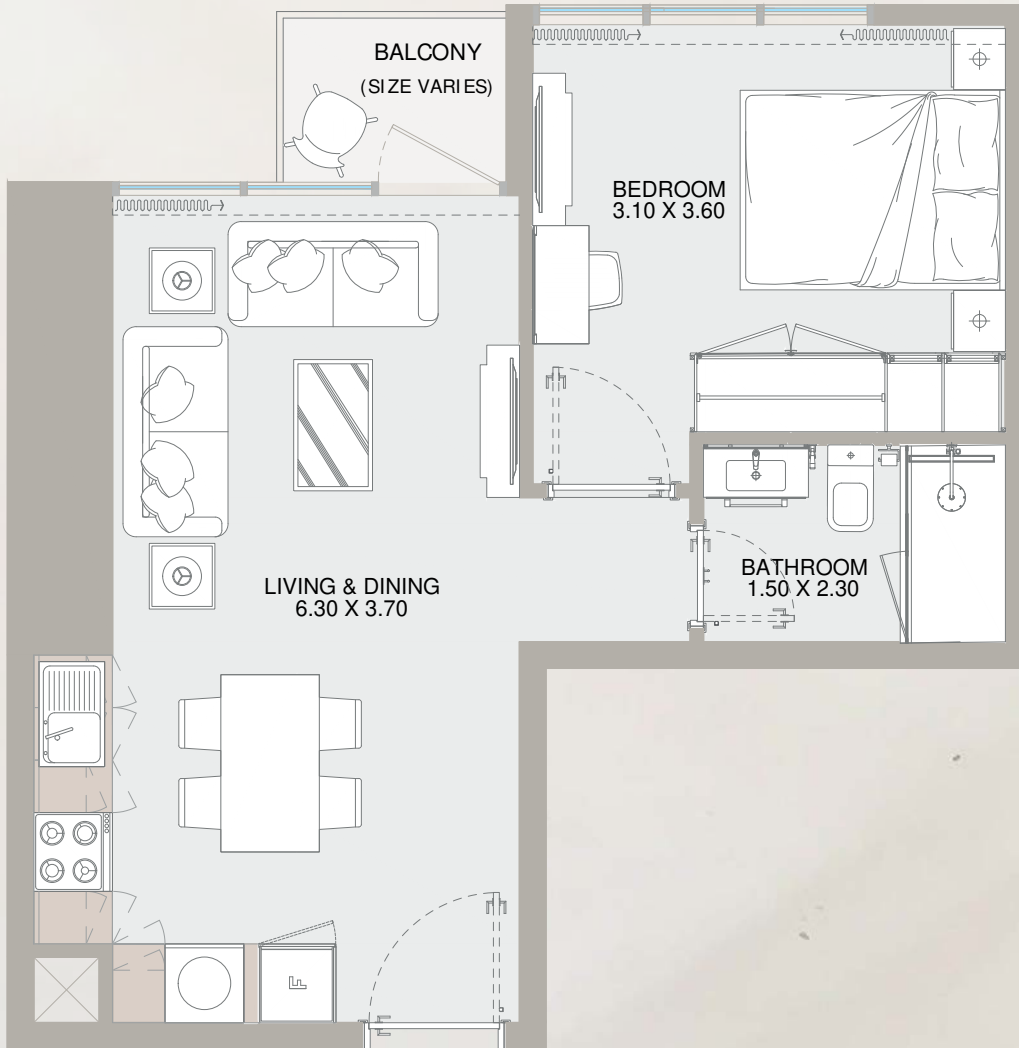
عدد الطوابق: 3 طابق سفلي + طابق أرضي + 6 طوابق مواقف سيارات داخلية + 39 طابق سكني
קומות: 3 מרתפים + קומת קרקע + 6 מפלסים + 39 קומות מגורים

סוגי דירות

ותוכניות קומה

כל השרטוטים והמידות הם הערכה בלבד. השרטוטים אינם בקנה מידה מדויק, וכפופים לשינוי ללא התראה. חברת הפיתוח שומרת את הזכות לבצע שינויים. יחידות המגורים נמדדות לפי הקומות הטיפוסיות בבניין, וגודל העמודים עשוי להשתנות בהתאם למפלס ולקומה. הרהיטים והאביזרים המוצגים נועדו למטרת המחשה בלבד. הזמינות, האורך והרוחב של המרפסות משתנים בהתאם לקומה ולכיוון של היחידה בבניין. ייתכנו פרשים קלים באזורים הפנימיים בין סוגי יחידות זהים, בהתאם לגודל העמודים המותקנים ביחידה.

1B TYPE - A1

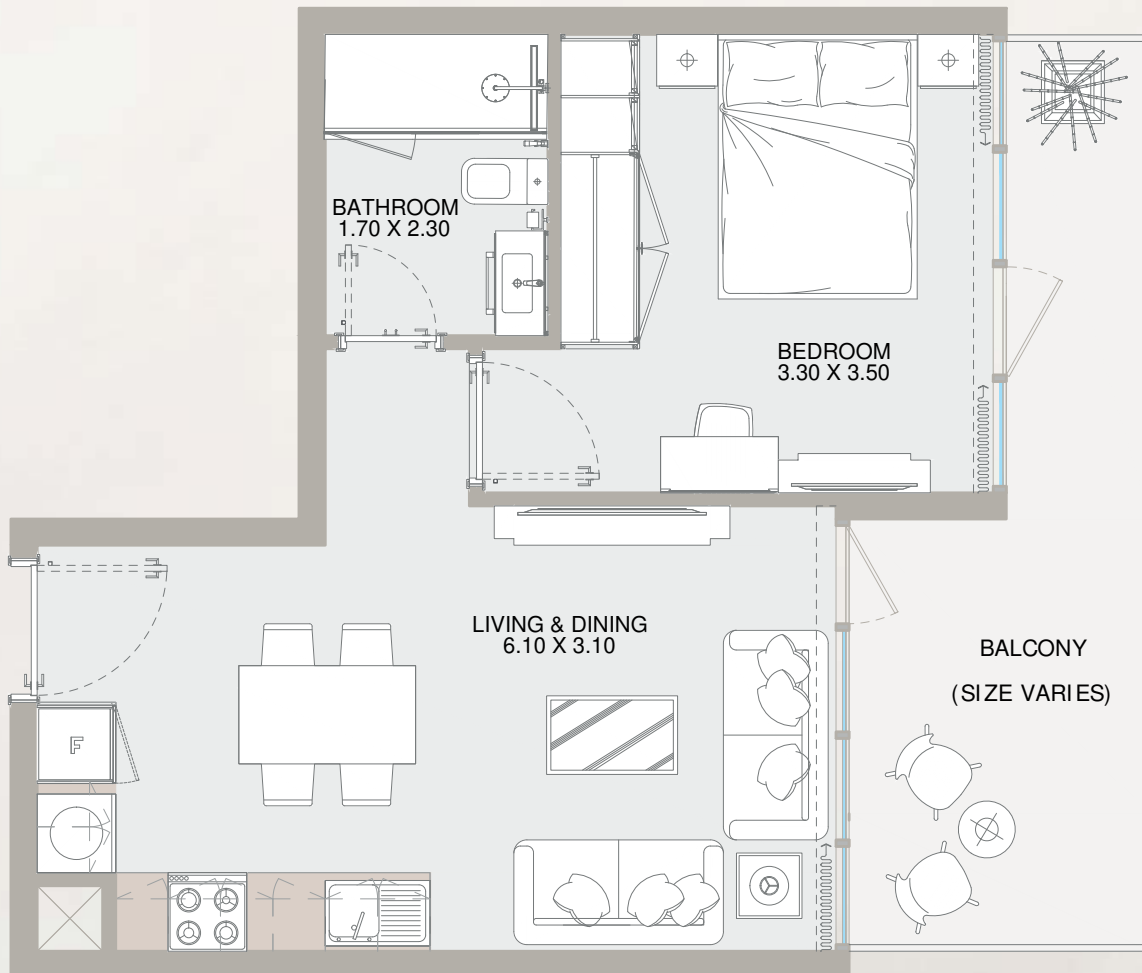


From 8th Floor to 44th Floor

Internal Area	463 sq.ft
Outdoor Area	32 sq.ft
Total Area	495 sq.ft

All drawings and dimensions are approximate. Drawings are not to scale and are subject to change without notice. The developer reserves the right to make revisions. The units are measured at typical floors in the building and columns may vary in size depending on the floor level. The furnishing and accessories shown are for representation only. The availability, length and width of the balcony varies depending on which floor and which orientation the unit is located within the building. There will be slight differences in the internal areas between the same unit types depending on the shaft sizes that go through the units.

1B TYPE - A2

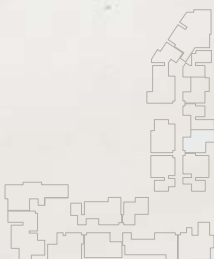
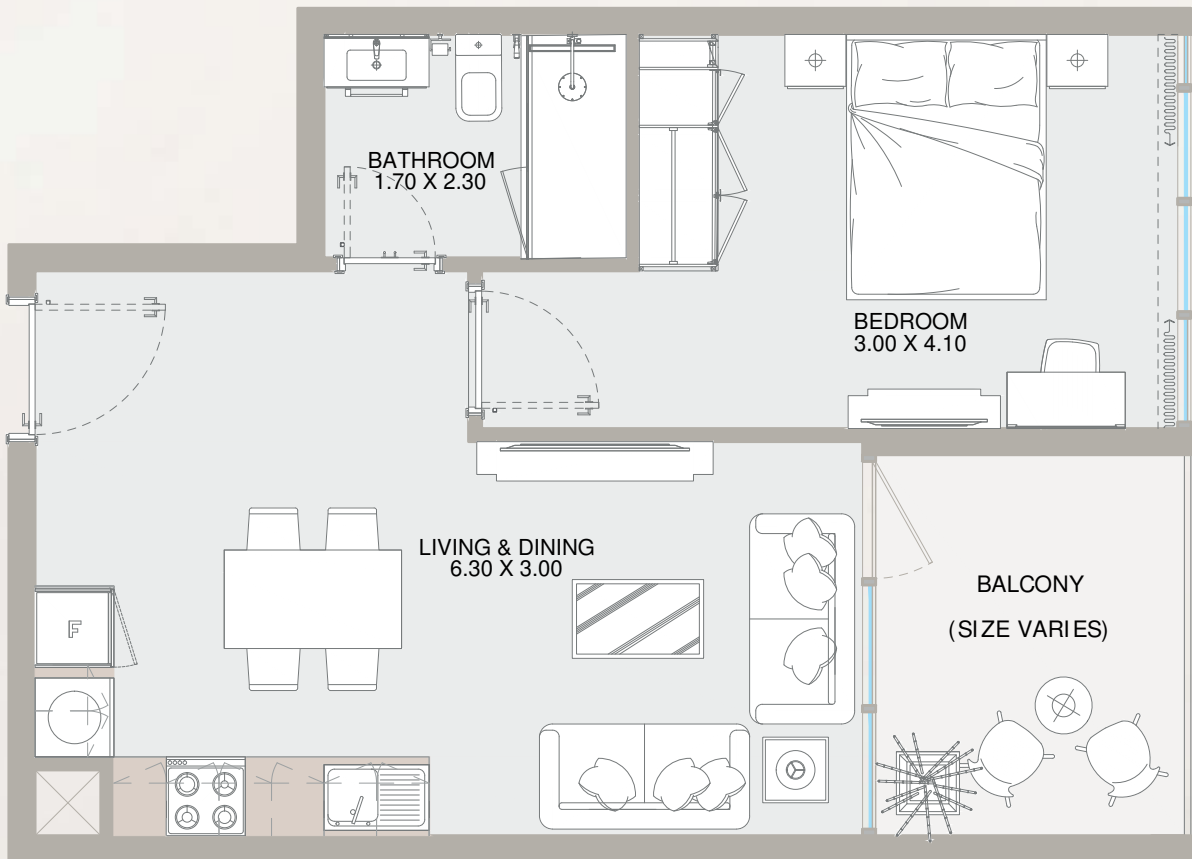


From 7th Floor to 44th Floor

Internal Area	451 sq.ft
Outdoor Area	77 sq.ft
Total Area	528 sq.ft

All drawings and dimensions are approximate. Drawings are not to scale and are subject to change without notice. The developer reserves the right to make revisions. The units are measured at typical floors in the building and columns may vary in size depending on the floor level. The furnishing and accessories shown are for representation only. The availability, length and width of the balcony varies depending on which floor and which orientation the unit is located within the building. There will be slight differences in the internal areas between the same unit types depending on the shaft sizes that go through the units.

1B TYPE - B1

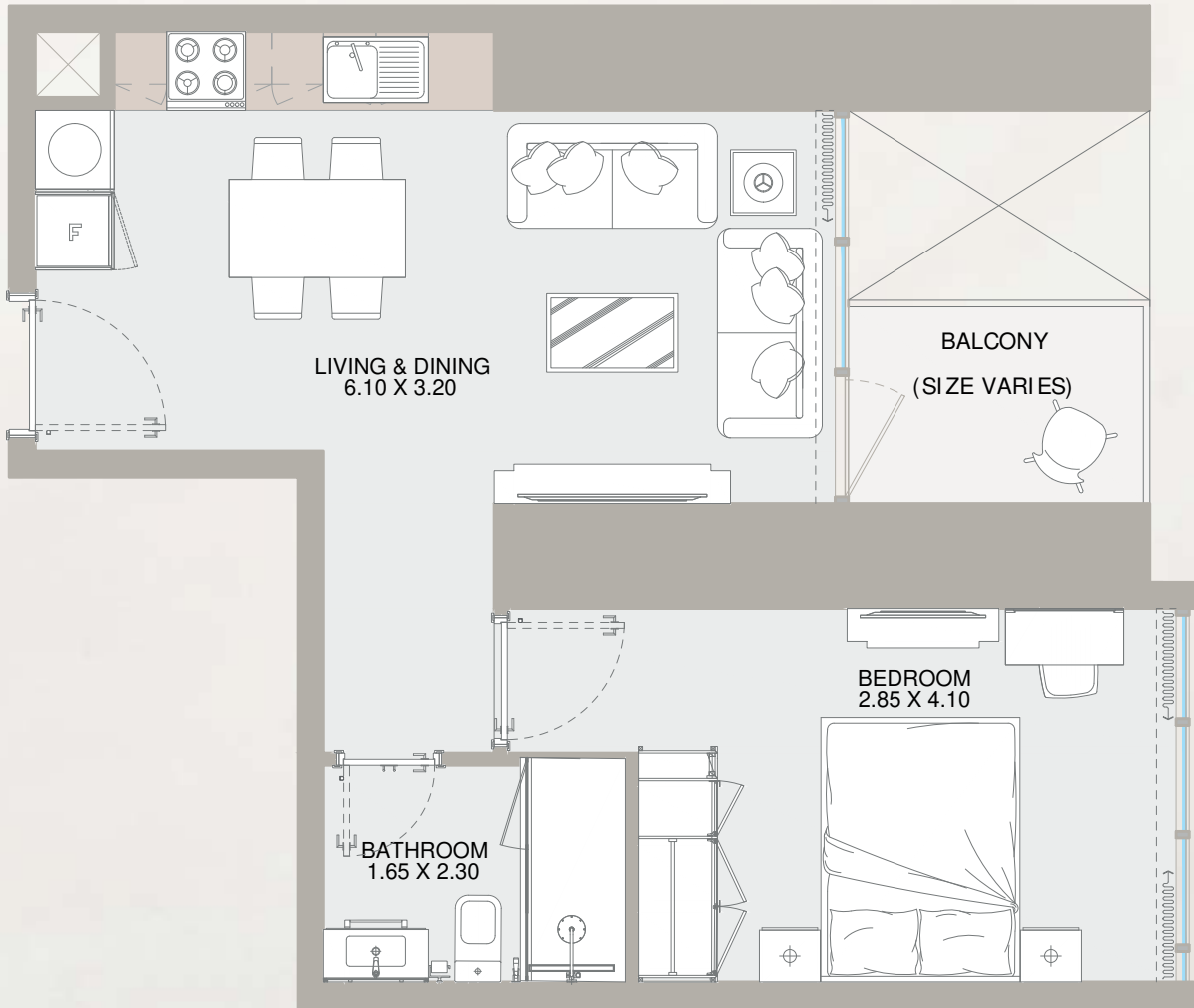


From 7th Floor to 18th Floor

Internal Area	451 to 482 sq.ft
Outdoor Area	87 to 111 sq.ft
Total Area	558 to 569 sq.ft

All drawings and dimensions are approximate. Drawings are not to scale and are subject to change without notice. The developer reserves the right to make revisions. The units are measured at typical floors in the building and columns may vary in size depending on the floor level. The furnishing and accessories shown are for representation only. The availability, length and width of the balcony varies depending on which floor and which orientation the unit is located within the building. There will be slight differences in the internal areas between the same unit types depending on the shaft sizes that go through the units.

1B TYPE - B2

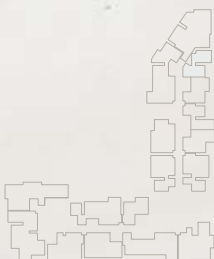
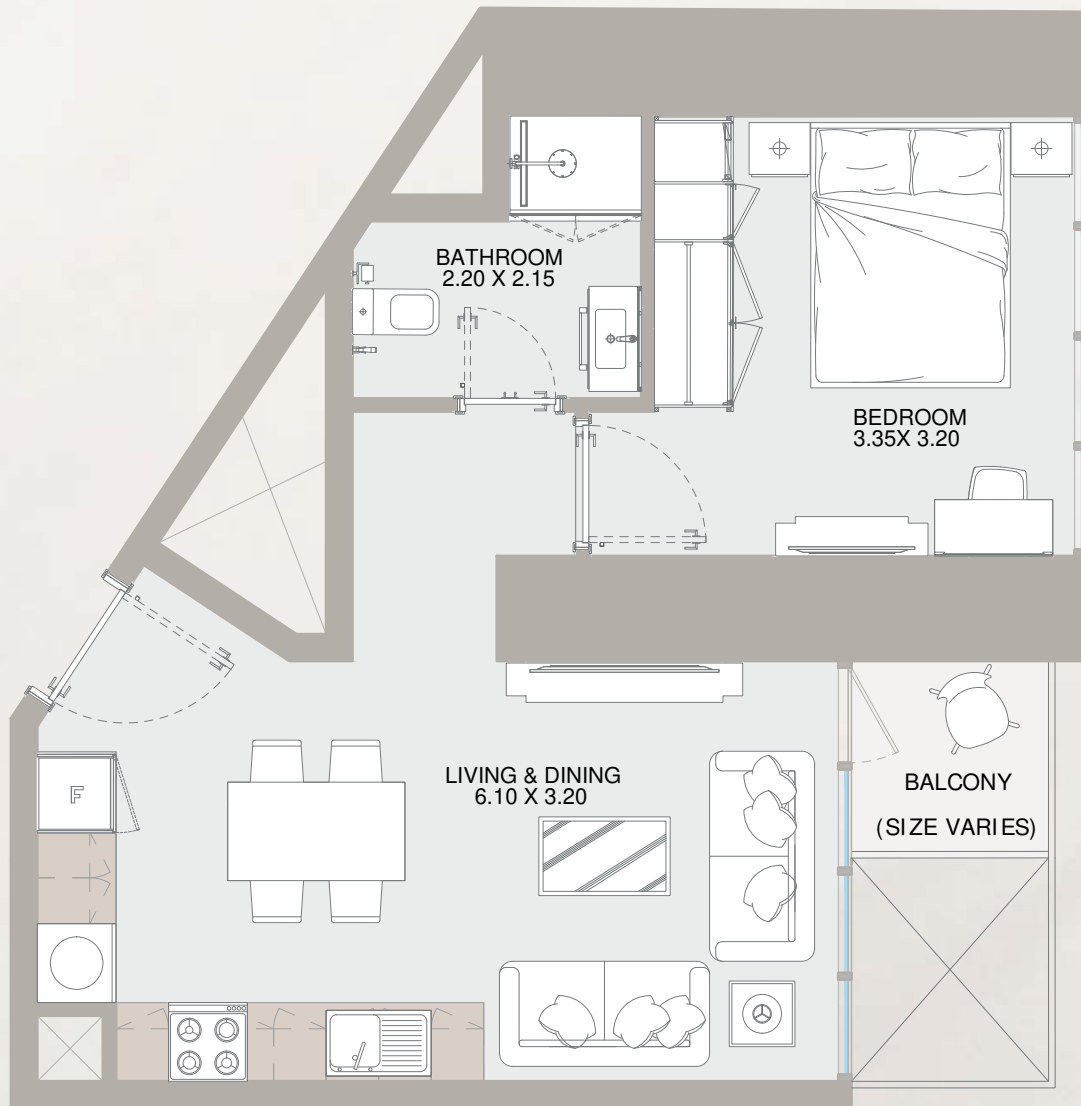


From 7th Floor to 44th Floor

Internal Area	451 sq.ft
Outdoor Area	73 to 160 sq.ft
Total Area	524 to 611 sq.ft

All drawings and dimensions are approximate. Drawings are not to scale and are subject to change without notice. The developer reserves the right to make revisions. The units are measured at typical floors in the building and columns may vary in size depending on the floor level. The furnishing and accessories shown are for representation only. The availability, length and width of the balcony varies depending on which floor and which orientation the unit is located within the building. There will be slight differences in the internal areas between the same unit types depending on the shaft sizes that go through the units.

1B TYPE - C

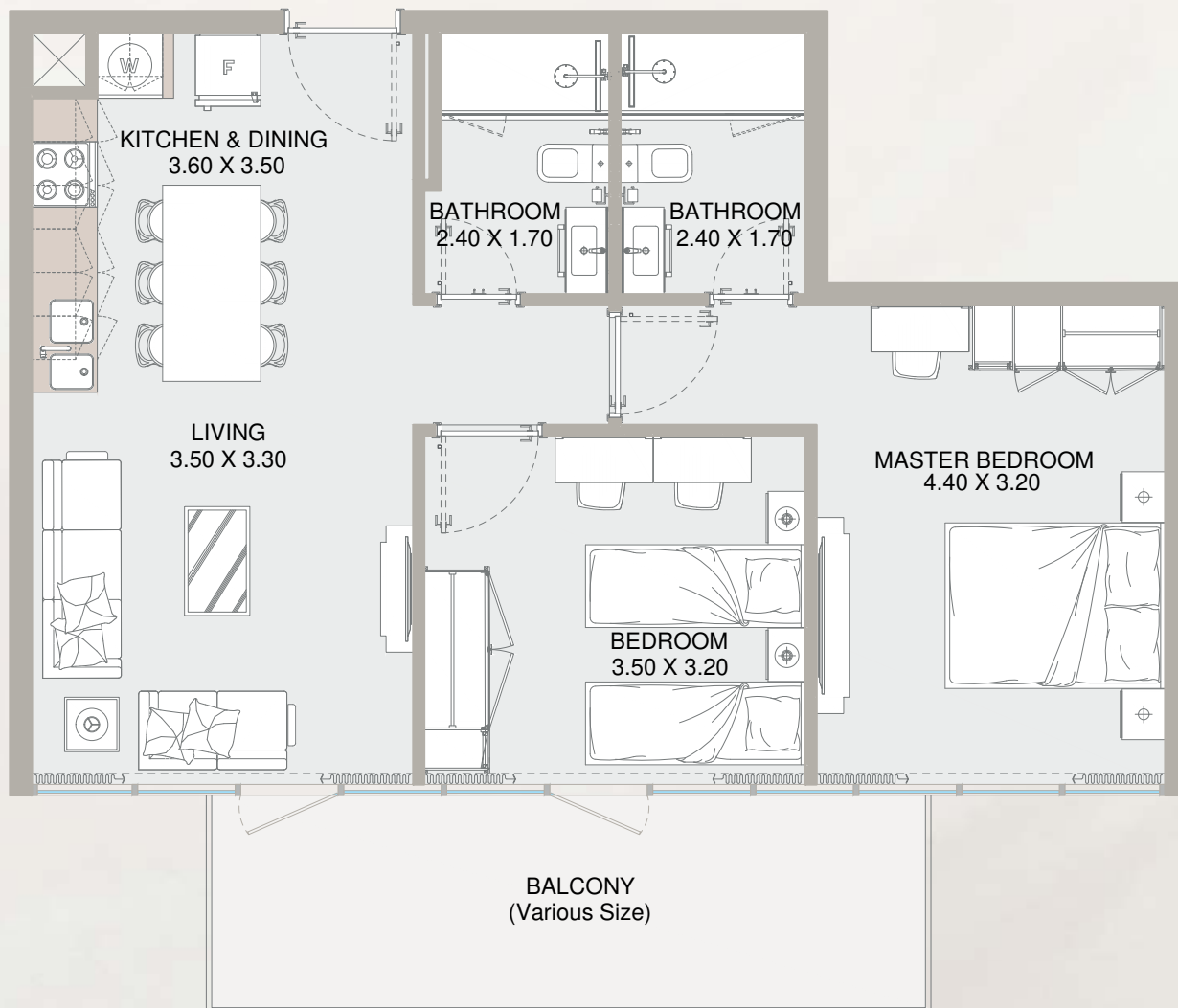


From 7th Floor to 44th Floor

Internal Area	468 sq.ft
Outdoor Area	42 to 105 sq.ft
Total Area	510 to 573 sq.ft

All drawings and dimensions are approximate. Drawings are not to scale and are subject to change without notice. The developer reserves the right to make revisions. The units are measured at typical floors in the building and columns may vary in size depending on the floor level. The furnishing and accessories shown are for representation only. The availability, length and width of the balcony varies depending on which floor and which orientation the unit is located within the building. There will be slight differences in the internal areas between the same unit types depending on the shaft sizes that go through the units.

2B TYPE - A1

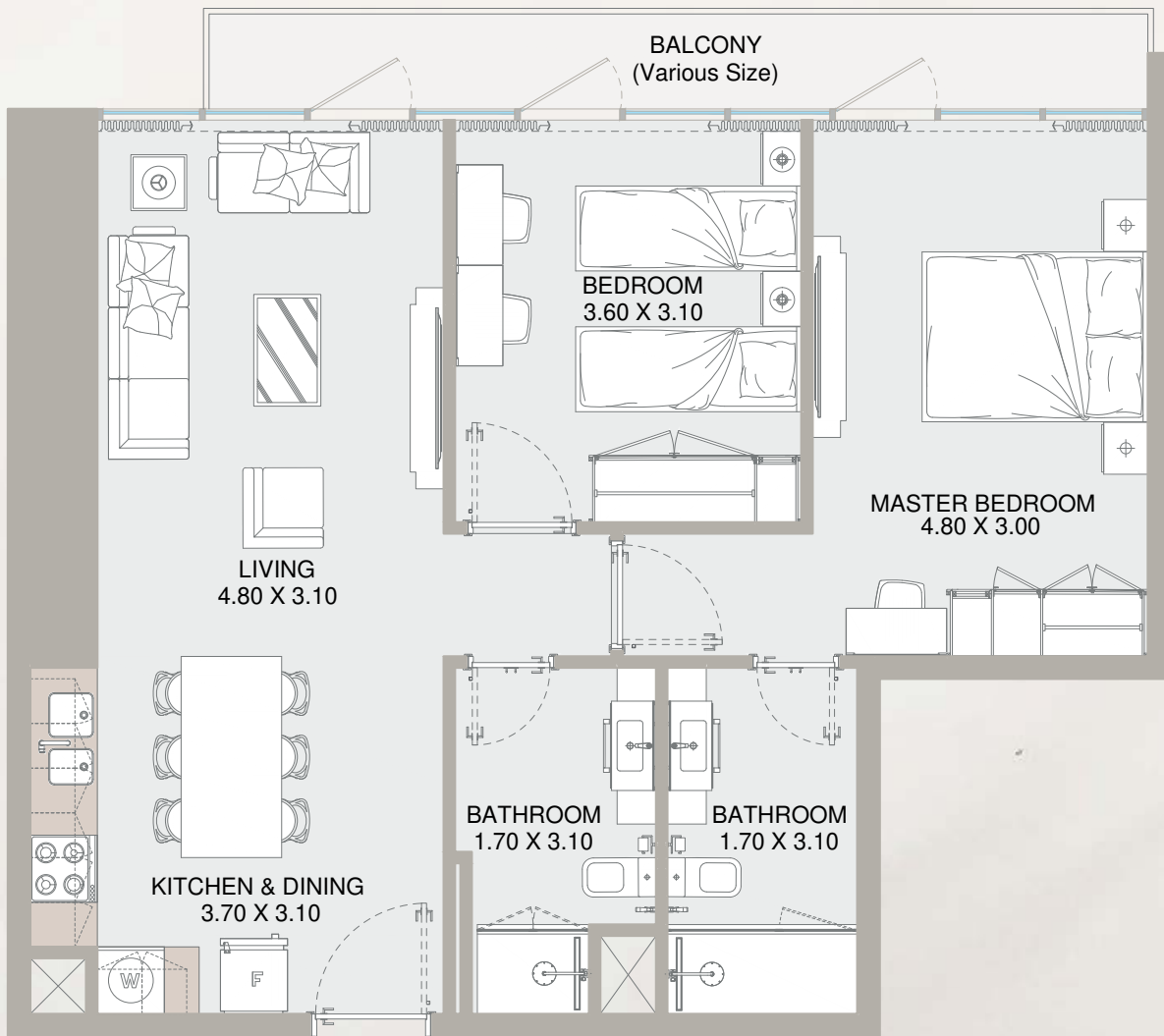


From 7th Floor to 45th Floor

Internal Area	702 sq.ft
Outdoor Area	157 to 241 sq.ft
Total Area	859 to 943 sq.ft

All drawings and dimensions are approximate. Drawings are not to scale and are subject to change without notice. The developer reserves the right to make revisions. The units are measured at typical floors in the building and columns may vary in size depending on the floor level. The furnishing and accessories shown are for representation only. The availability, length and width of the balcony varies depending on which floor and which orientation the unit is located within the building. There will be slight differences in the internal areas between the same unit types depending on the shaft sizes that go through the units.

2B TYPE - A2

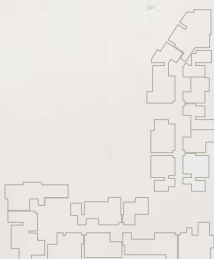
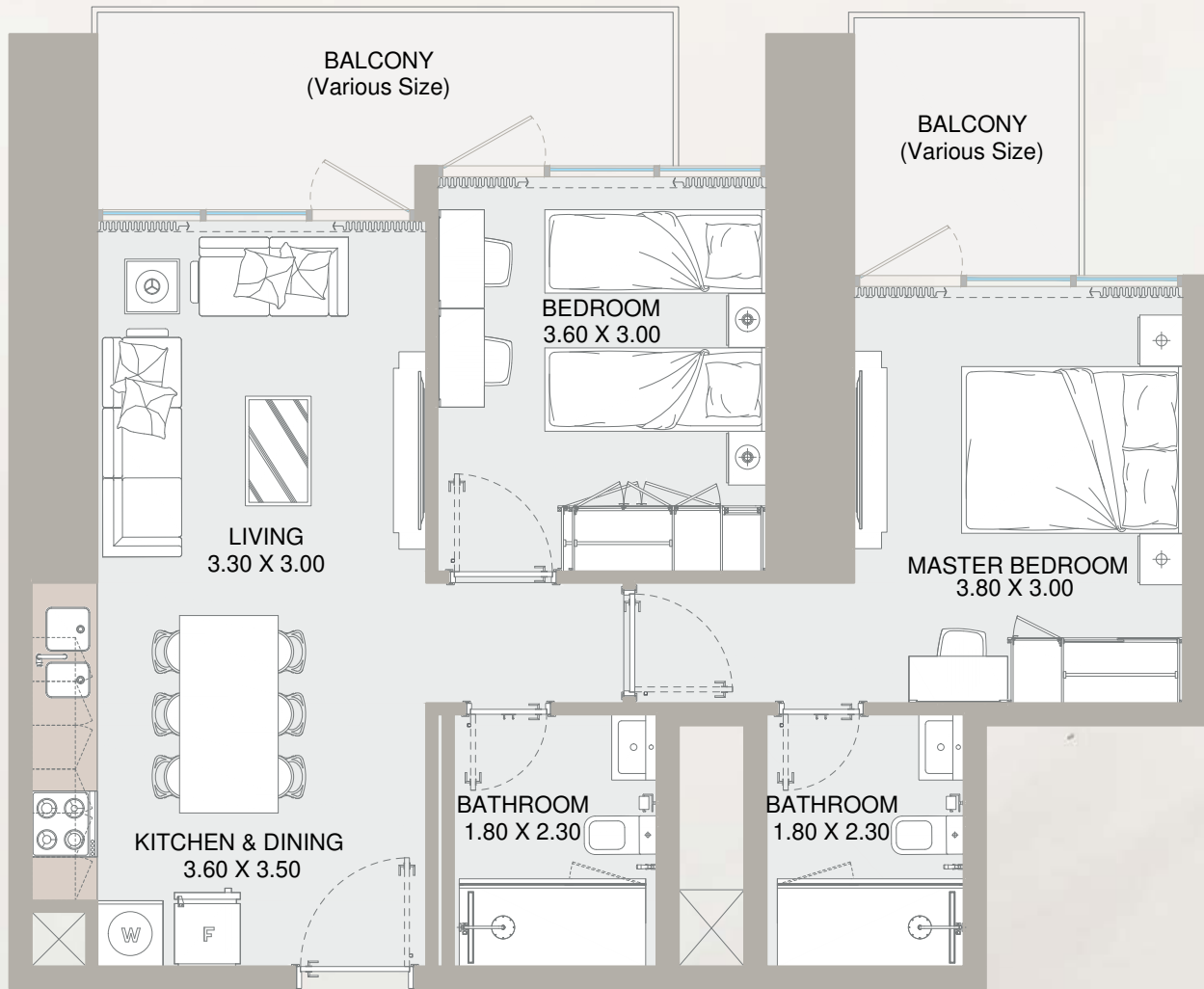


From 7th Floor to 45th Floor

Internal Area	702 sq.ft
Outdoor Area	157 to 182 sq.ft
Total Area	859 to 884 sq.ft

All drawings and dimensions are approximate. Drawings are not to scale and are subject to change without notice. The developer reserves the right to make revisions. The units are measured at typical floors in the building and columns may vary in size depending on the floor level. The furnishing and accessories shown are for representation only. The availability, length and width of the balcony varies depending on which floor and which orientation the unit is located within the building. There will be slight differences in the internal areas between the same unit types depending on the shaft sizes that go through the units.

2B TYPE - A3

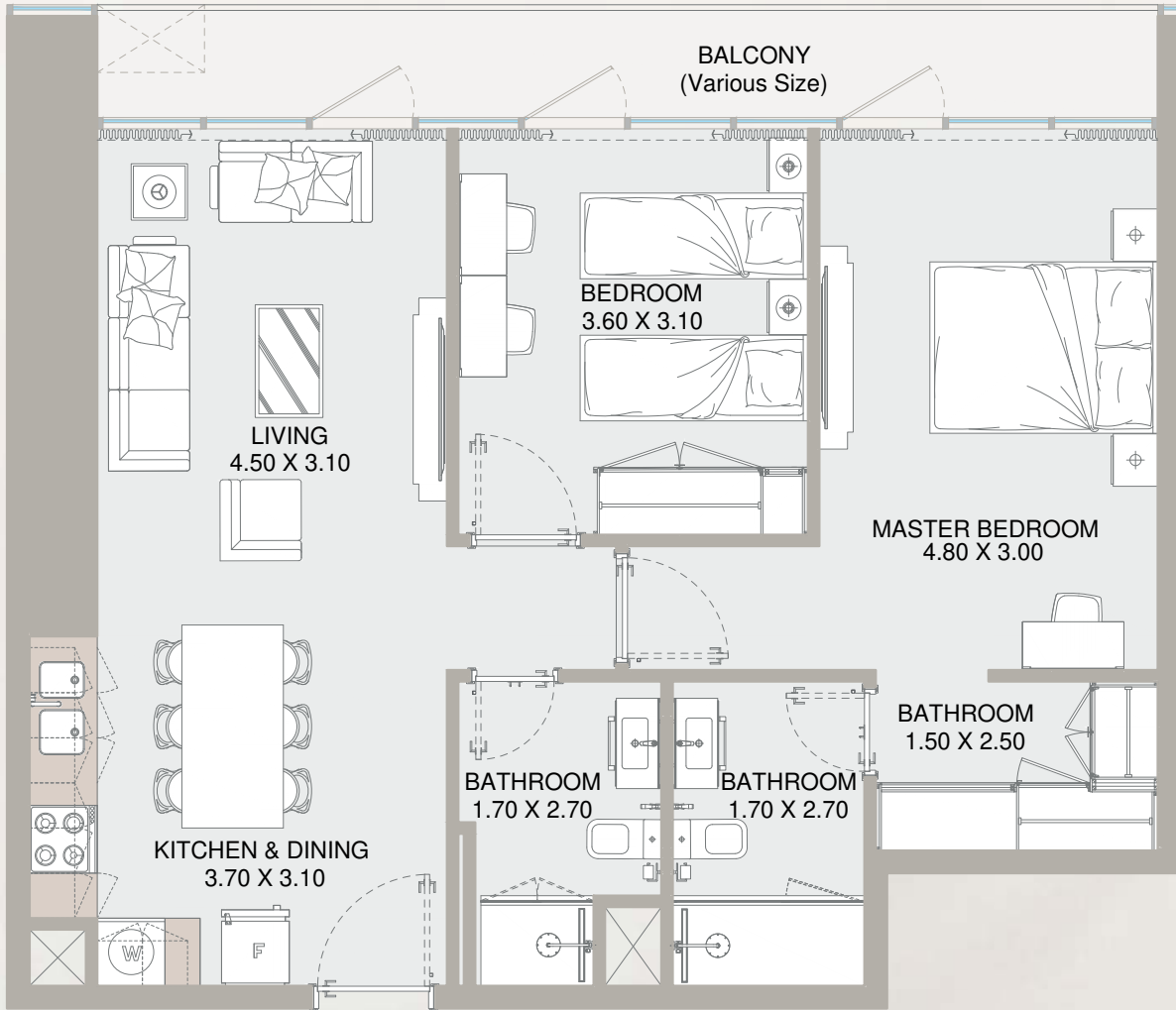


From 7th Floor to 18th Floor

Internal Area	701 sq.ft
Outdoor Area	180 to 251 sq.ft
Total Area	881 to 952 sq.ft

All drawings and dimensions are approximate. Drawings are not to scale and are subject to change without notice. The developer reserves the right to make revisions. The units are measured at typical floors in the building and columns may vary in size depending on the floor level. The furnishing and accessories shown are for representation only. The availability, length and width of the balcony varies depending on which floor and which orientation the unit is located within the building. There will be slight differences in the internal areas between the same unit types depending on the shaft sizes that go through the units.

2B TYPE - A4

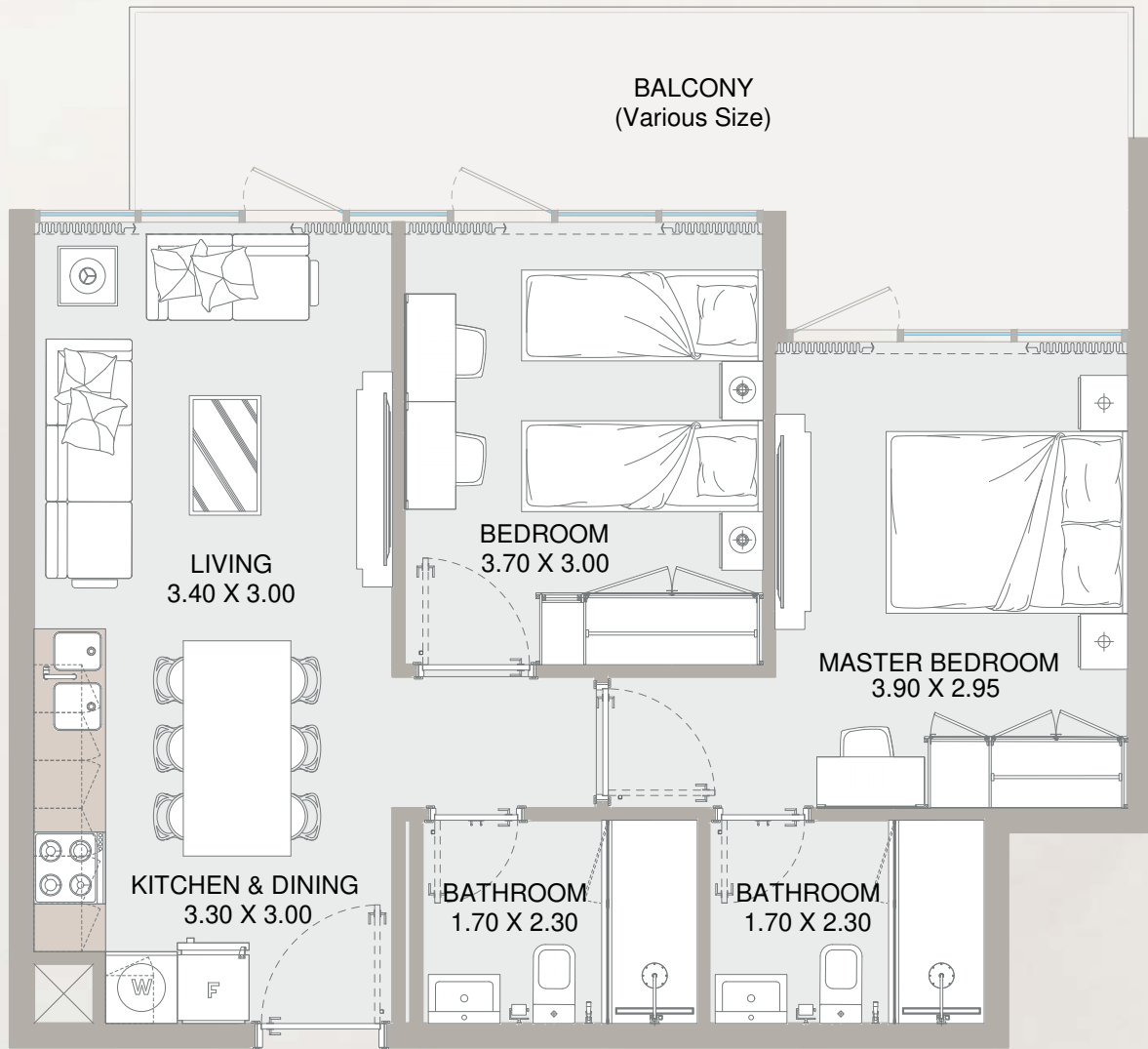


From 7th Floor

Internal Area	702 sq.ft
Outdoor Area	241 sq.ft
Total Area	943 sq.ft

All drawings and dimensions are approximate. Drawings are not to scale and are subject to change without notice. The developer reserves the right to make revisions. The units are measured at typical floors in the building and columns may vary in size depending on the floor level. The furnishing and accessories shown are for representation only. The availability, length and width of the balcony varies depending on which floor and which orientation the unit is located within the building. There will be slight differences in the internal areas between the same unit types depending on the shaft sizes that go through the units.

2B TYPE - B1

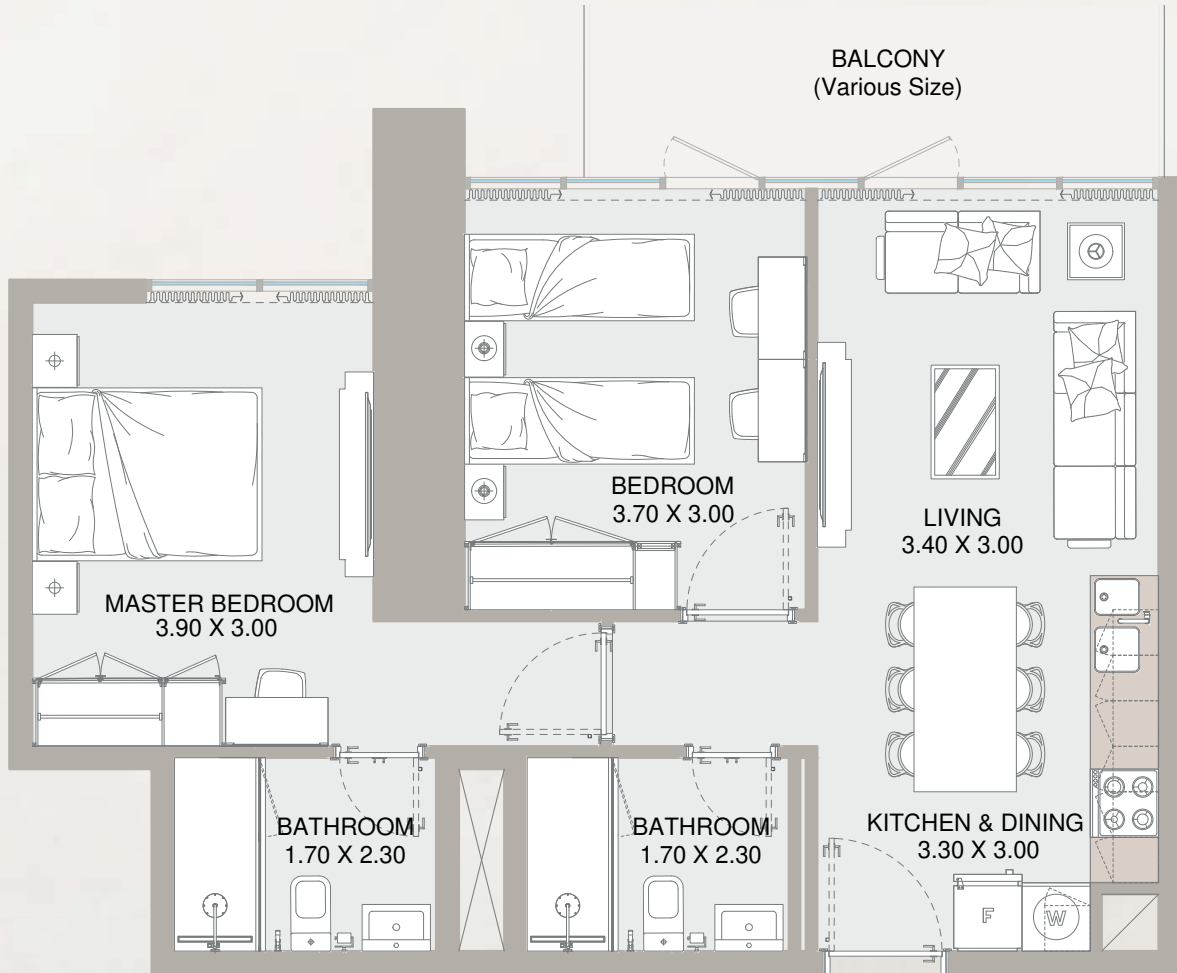


From 7th Floor to 44th Floor

Internal Area	682 sq.ft
Outdoor Area	158 to 407 sq.ft
Total Area	840 to 1,089 sq.ft

All drawings and dimensions are approximate. Drawings are not to scale and are subject to change without notice. The developer reserves the right to make revisions. The units are measured at typical floors in the building and columns may vary in size depending on the floor level. The furnishing and accessories shown are for representation only. The availability, length and width of the balcony varies depending on which floor and which orientation the unit is located within the building. There will be slight differences in the internal areas between the same unit types depending on the shaft sizes that go through the units.

2B TYPE - B2



From 7th Floor to 44th Floor

Internal Area	699 sq.ft
Outdoor Area	90 to 431 sq.ft
Total Area	789 to 1,130 sq.ft

All drawings and dimensions are approximate. Drawings are not to scale and are subject to change without notice. The developer reserves the right to make revisions. The units are measured at typical floors in the building and columns may vary in size depending on the floor level. The furnishing and accessories shown are for representation only. The availability, length and width of the balcony varies depending on which floor and which orientation the unit is located within the building. There will be slight differences in the internal areas between the same unit types depending on the shaft sizes that go through the units.

2B TYPE - C

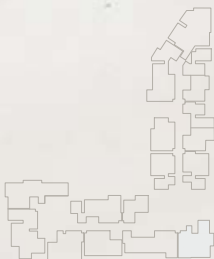
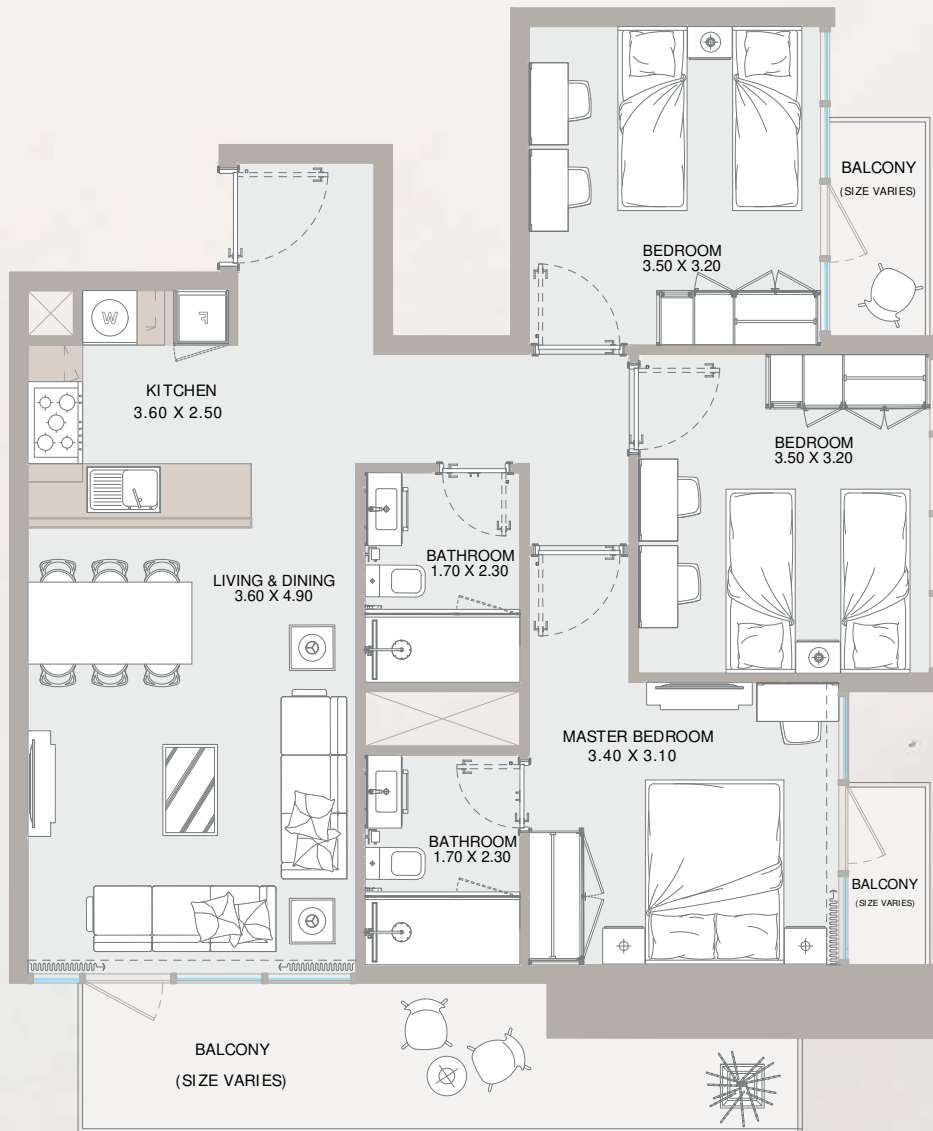


45th Floor

Internal Area	726 sq.ft
Outdoor Area	858 sq.ft
Total Area	1,584 sq.ft

All drawings and dimensions are approximate. Drawings are not to scale and are subject to change without notice. The developer reserves the right to make revisions. The units are measured at typical floors in the building and columns may vary in size depending on the floor level. The furnishing and accessories shown are for representation only. The availability, length and width of the balcony varies depending on which floor and which orientation the unit is located within the building. There will be slight differences in the internal areas between the same unit types depending on the shaft sizes that go through the units.

3B TYPE - A1



From 8th Floor to 45th Floor

Internal Area	907 sq.ft
Outdoor Area	170 to 194 sq.ft
Total Area	1,077 to 1,102 sq.ft

All drawings and dimensions are approximate. Drawings are not to scale and are subject to change without notice. The developer reserves the right to make revisions. The units are measured at typical floors in the building and columns may vary in size depending on the floor level. The furnishing and accessories shown are for representation only. The availability, length and width of the balcony varies depending on which floor and which orientation the unit is located within the building. There will be slight differences in the internal areas between the same unit types depending on the shaft sizes that go through the units.

3B TYPE - A2

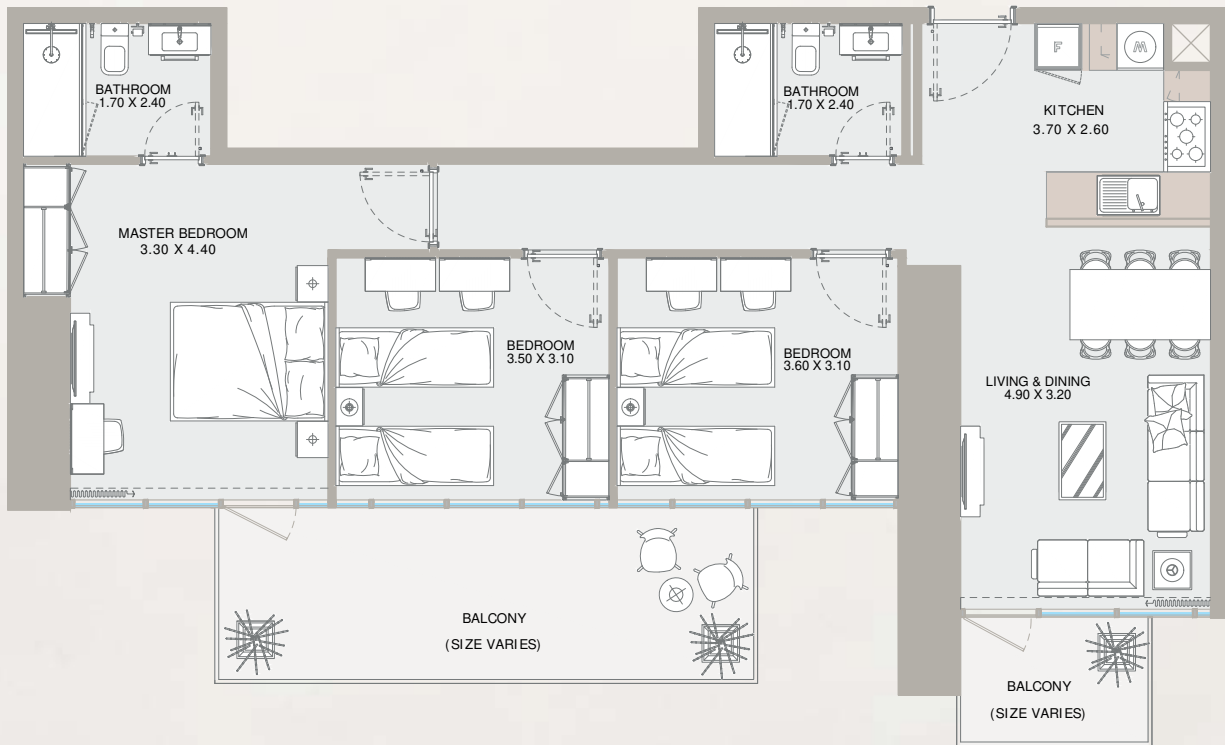


7th Floor

Internal Area	907 sq.ft
Outdoor Area	221 sq.ft
Total Area	1,128 sq.ft

All drawings and dimensions are approximate. Drawings are not to scale and are subject to change without notice. The developer reserves the right to make revisions. The units are measured at typical floors in the building and columns may vary in size depending on the floor level. The furnishing and accessories shown are for representation only. The availability, length and width of the balcony varies depending on which floor and which orientation the unit is located within the building. There will be slight differences in the internal areas between the same unit types depending on the shaft sizes that go through the units.

3B TYPE - B

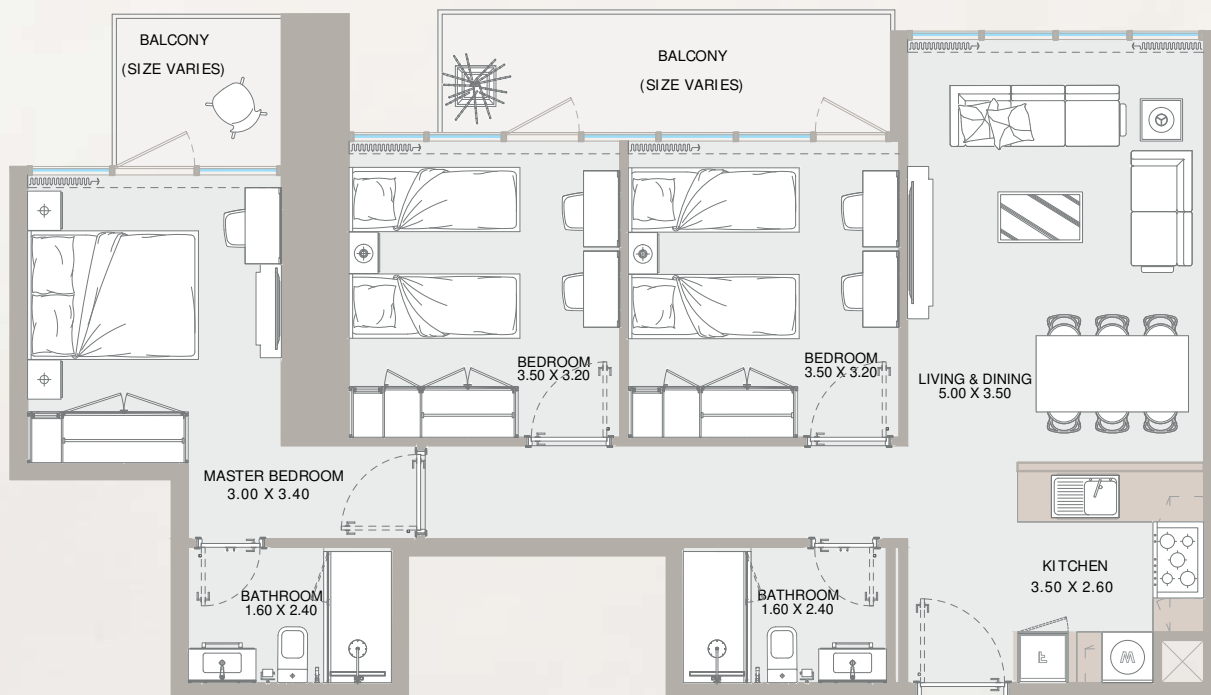


From 7th Floor to 45th Floor

Internal Area	929 to 958 sq.ft
Outdoor Area	237 to 367 sq.ft
Total Area	1,166 to 1,324 sq.ft

All drawings and dimensions are approximate. Drawings are not to scale and are subject to change without notice. The developer reserves the right to make revisions. The units are measured at typical floors in the building and columns may vary in size depending on the floor level. The furnishing and accessories shown are for representation only. The availability, length and width of the balcony varies depending on which floor and which orientation the unit is located within the building. There will be slight differences in the internal areas between the same unit types depending on the shaft sizes that go through the units.

3B TYPE - C

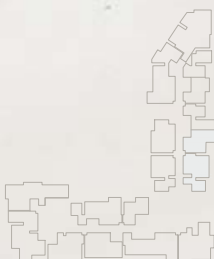
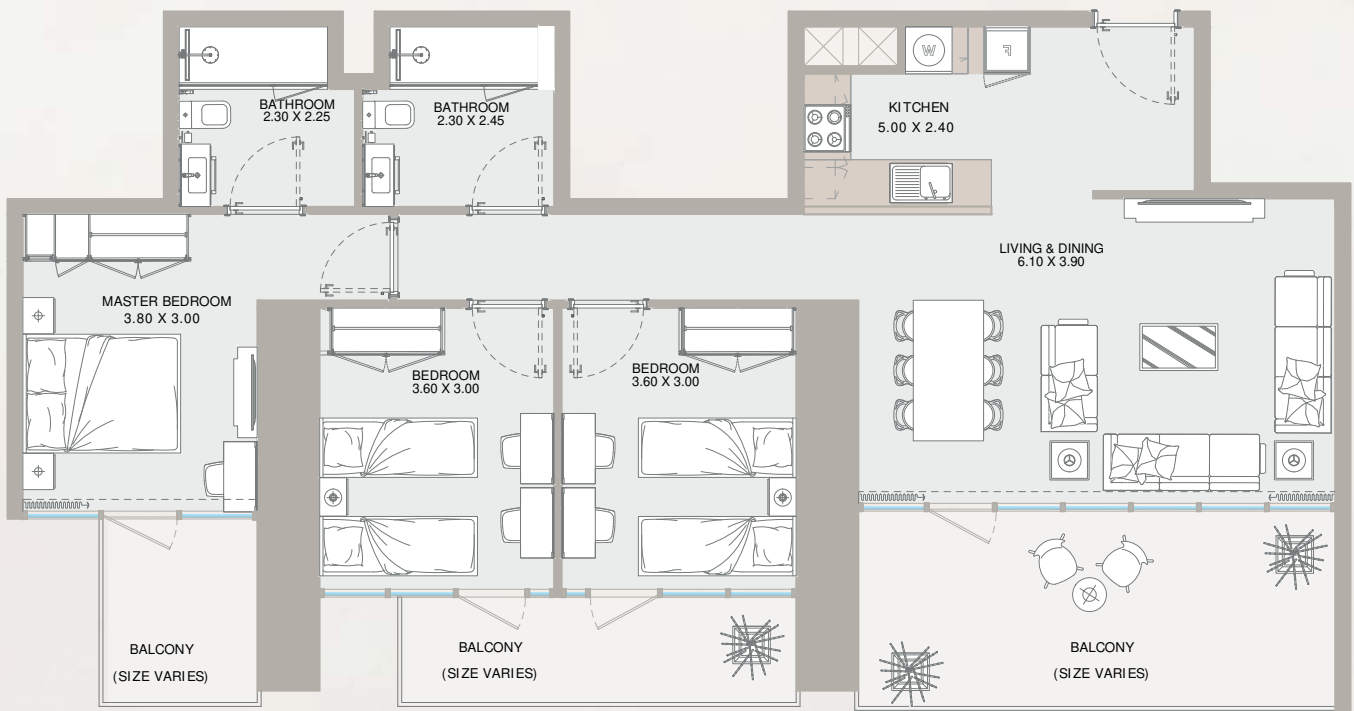


From 7th Floor to 44th Floor

Internal Area	949 sq.ft
Outdoor Area	1,06 to 678 sq.ft
Total Area	1,055 to 1,627 sq.ft

All drawings and dimensions are approximate. Drawings are not to scale and are subject to change without notice. The developer reserves the right to make revisions. The units are measured at typical floors in the building and columns may vary in size depending on the floor level. The furnishing and accessories shown are for representation only. The availability, length and width of the balcony varies depending on which floor and which orientation the unit is located within the building. There will be slight differences in the internal areas between the same unit types depending on the shaft sizes that go through the units.

3B TYPE - D



From 19th Floor to 44th Floor

Internal Area	968 sq.ft
Outdoor Area	419 to 448 sq.ft
Total Area	1,387 to 1,416 sq.ft

All drawings and dimensions are approximate. Drawings are not to scale and are subject to change without notice. The developer reserves the right to make revisions. The units are measured at typical floors in the building and columns may vary in size depending on the floor level. The furnishing and accessories shown are for representation only. The availability, length and width of the balcony varies depending on which floor and which orientation the unit is located within the building. There will be slight differences in the internal areas between the same unit types depending on the shaft sizes that go through the units.

3B PENTHOUSE TYPE - A

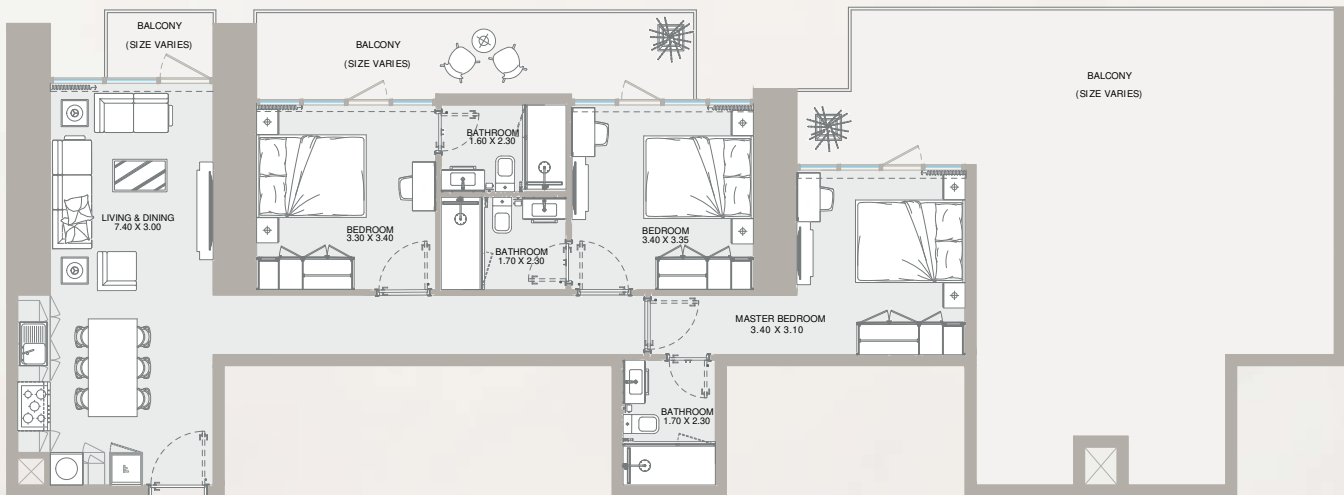


44th Floor

Internal Area	1,193 sq.ft
Outdoor Area	1,552 sq.ft
Total Area	2,745 sq.ft

All drawings and dimensions are approximate. Drawings are not to scale and are subject to change without notice. The developer reserves the right to make revisions. The units are measured at typical floors in the building and columns may vary in size depending on the floor level. The furnishing and accessories shown are for representation only. The availability, length and width of the balcony varies depending on which floor and which orientation the unit is located within the building. There will be slight differences in the internal areas between the same unit types depending on the shaft sizes that go through the units.

3B PENTHOUSE TYPE - B

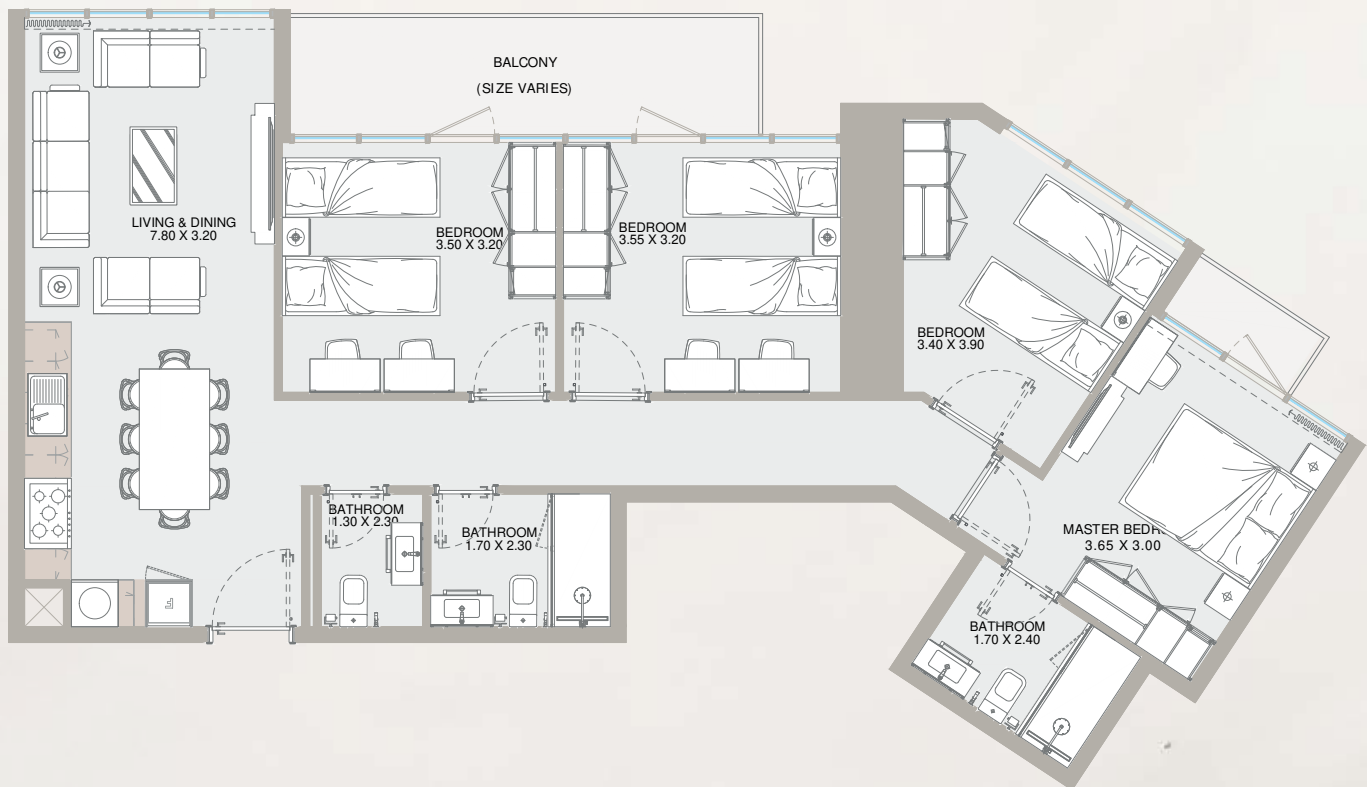


45th Floor

Internal Area	1,062 sq.ft
Outdoor Area	806 sq.ft
Total Area	1,868 sq.ft

All drawings and dimensions are approximate. Drawings are not to scale and are subject to change without notice. The developer reserves the right to make revisions. The units are measured at typical floors in the building and columns may vary in size depending on the floor level. The furnishing and accessories shown are for representation only. The availability, length and width of the balcony varies depending on which floor and which orientation the unit is located within the building. There will be slight differences in the internal areas between the same unit types depending on the shaft sizes that go through the units.

4B TYPE - A

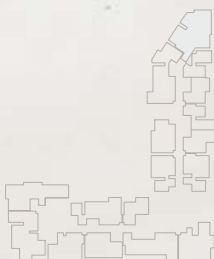


From 7th Floor to 44th Floor

Internal Area	1,054 sq.ft
Outdoor Area	1,74 to 661 sq.ft
Total Area	1,228 to 1,715 sq.ft

All drawings and dimensions are approximate. Drawings are not to scale and are subject to change without notice. The developer reserves the right to make revisions. The units are measured at typical floors in the building and columns may vary in size depending on the floor level. The furnishing and accessories shown are for representation only. The availability, length and width of the balcony varies depending on which floor and which orientation the unit is located within the building. There will be slight differences in the internal areas between the same unit types depending on the shaft sizes that go through the units.

4B TYPE - B



From 8th Floor to 44th Floor

Internal Area	1,155 sq.ft
Outdoor Area	263 to 276 sq.ft
Total Area	1,418 to 1,431 sq.ft

All drawings and dimensions are approximate. Drawings are not to scale and are subject to change without notice. The developer reserves the right to make revisions. The units are measured at typical floors in the building and columns may vary in size depending on the floor level. The furnishing and accessories shown are for representation only. The availability, length and width of the balcony varies depending on which floor and which orientation the unit is located within the building. There will be slight differences in the internal areas between the same unit types depending on the shaft sizes that go through the units.

4B TYPE - C1



From 8th Floor to 43rd Floor

Internal Area	1,084 sq.ft
Outdoor Area	363 to 369 sq.ft
Total Area	1,447 to 1,453 sq.ft

All drawings and dimensions are approximate. Drawings are not to scale and are subject to change without notice. The developer reserves the right to make revisions. The units are measured at typical floors in the building and columns may vary in size depending on the floor level. The furnishing and accessories shown are for representation only. The availability, length and width of the balcony varies depending on which floor and which orientation the unit is located within the building. There will be slight differences in the internal areas between the same unit types depending on the shaft sizes that go through the units.

4B TYPE - C2

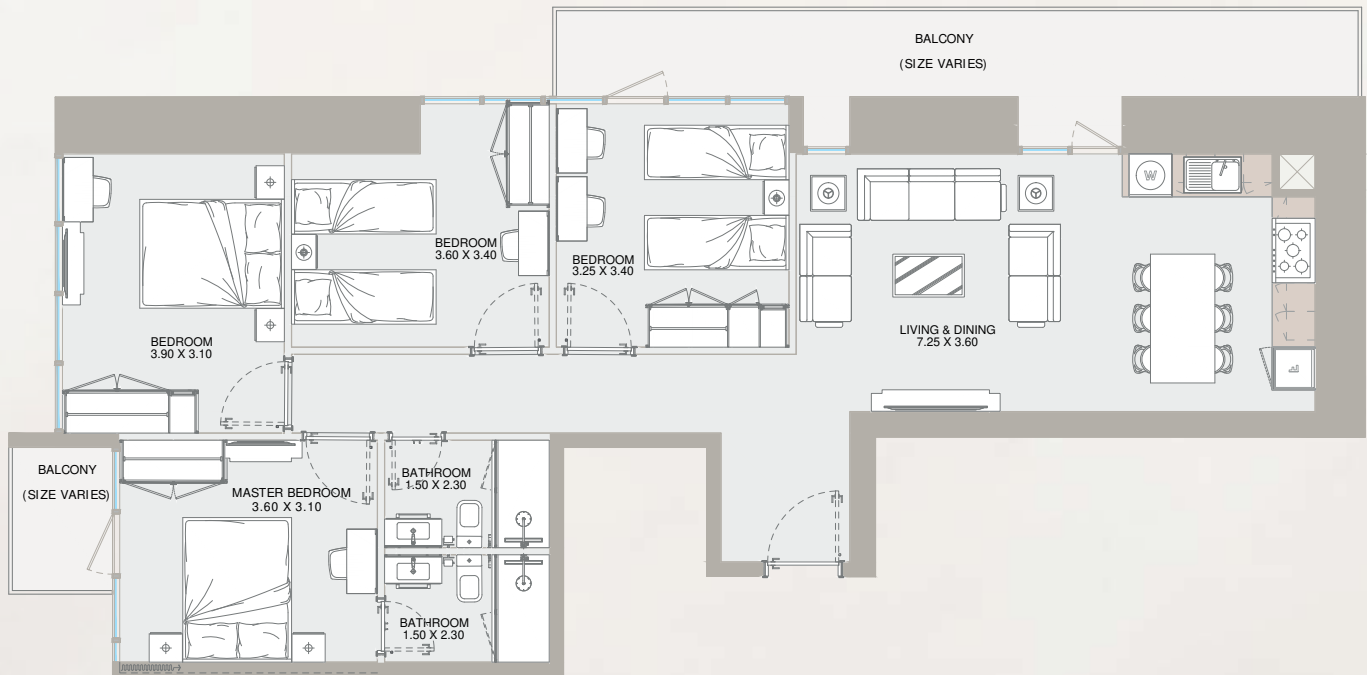


7th Floor

Internal Area	1,184 sq.ft
Outdoor Area	393 sq.ft
Total Area	1,577 sq.ft

All drawings and dimensions are approximate. Drawings are not to scale and are subject to change without notice. The developer reserves the right to make revisions. The units are measured at typical floors in the building and columns may vary in size depending on the floor level. The furnishing and accessories shown are for representation only. The availability, length and width of the balcony varies depending on which floor and which orientation the unit is located within the building. There will be slight differences in the internal areas between the same unit types depending on the shaft sizes that go through the units.

4B TYPE - D



From 7th Floor to 43rd Floor

Internal Area	1,026 sq.ft
Outdoor Area	238 to 646 sq.ft
Total Area	1,264 to 1672 sq.ft

All drawings and dimensions are approximate. Drawings are not to scale and are subject to change without notice. The developer reserves the right to make revisions. The units are measured at typical floors in the building and columns may vary in size depending on the floor level. The furnishing and accessories shown are for representation only. The availability, length and width of the balcony varies depending on which floor and which orientation the unit is located within the building. There will be slight differences in the internal areas between the same unit types depending on the shaft sizes that go through the units.

4B PENTHOUSE TYPE - A

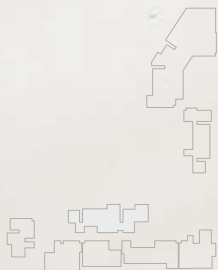
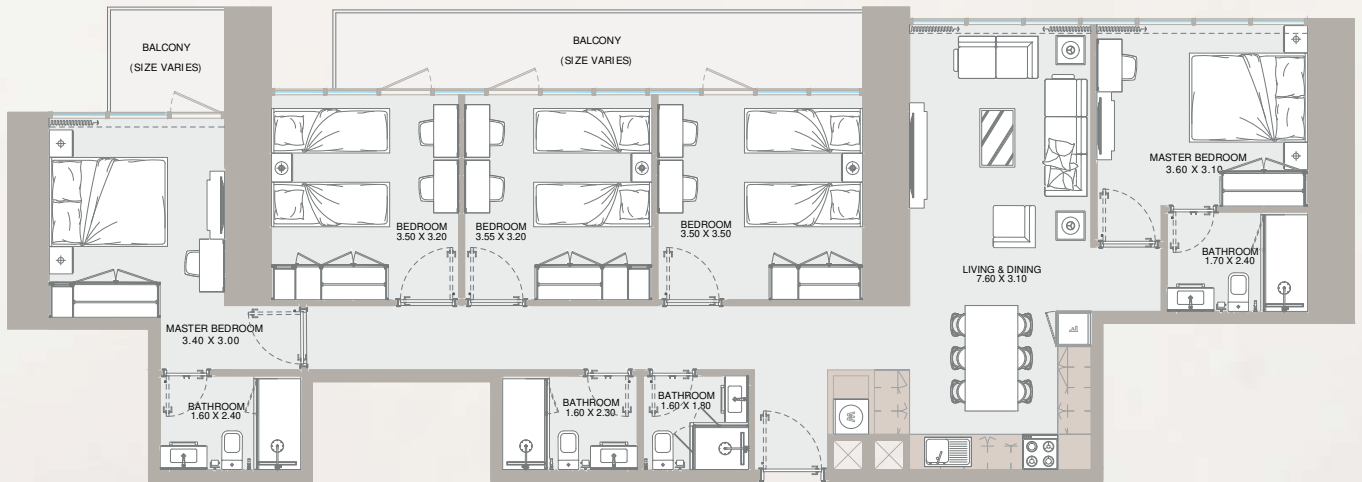


45th Floor

Internal Area	1,108 sq.ft
Outdoor Area	1,911 sq.ft
Total Area	3,019 sq.ft

All drawings and dimensions are approximate. Drawings are not to scale and are subject to change without notice. The developer reserves the right to make revisions. The units are measured at typical floors in the building and columns may vary in size depending on the floor level. The furnishing and accessories shown are for representation only. The availability, length and width of the balcony varies depending on which floor and which orientation the unit is located within the building. There will be slight differences in the internal areas between the same unit types depending on the shaft sizes that go through the units.

5B TYPE - A



45th Floor

Internal Area	1,384 sq.ft
Outdoor Area	210 sq.ft
Total Area	1,594 sq.ft

All drawings and dimensions are approximate. Drawings are not to scale and are subject to change without notice. The developer reserves the right to make revisions. The units are measured at typical floors in the building and columns may vary in size depending on the floor level. The furnishing and accessories shown are for representation only. The availability, length and width of the balcony varies depending on which floor and which orientation the unit is located within the building. There will be slight differences in the internal areas between the same unit types depending on the shaft sizes that go through the units.

רייפורטאג العقارية
Reportage.
Properties

הרצליה פיתוח, ישראל

רחוב המנופים 2

בניין A Sea View

קומה 5

טלפון 09-7676707

טלפון נייד 050-2004461

Info@reportage.co.il

מידע נוסף זמין בכתובת www.reportage.co.il.
ניתן ליצור איתנו קשר בטלפון במספר 077-2308971

R.