

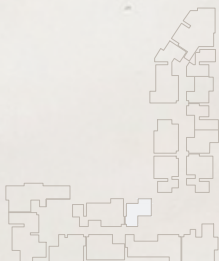
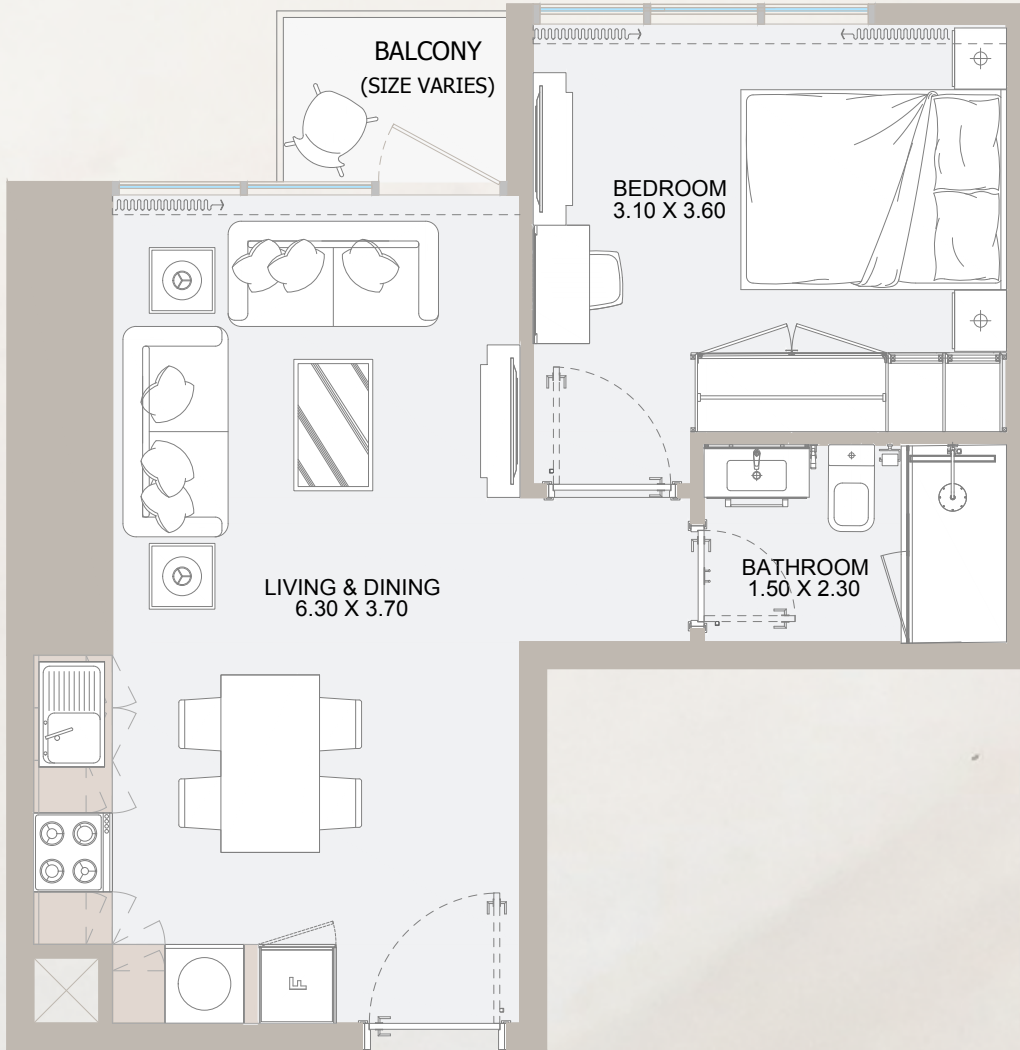
# Vista 3

AL REEM ISLAND





# 1B TYPE - A1

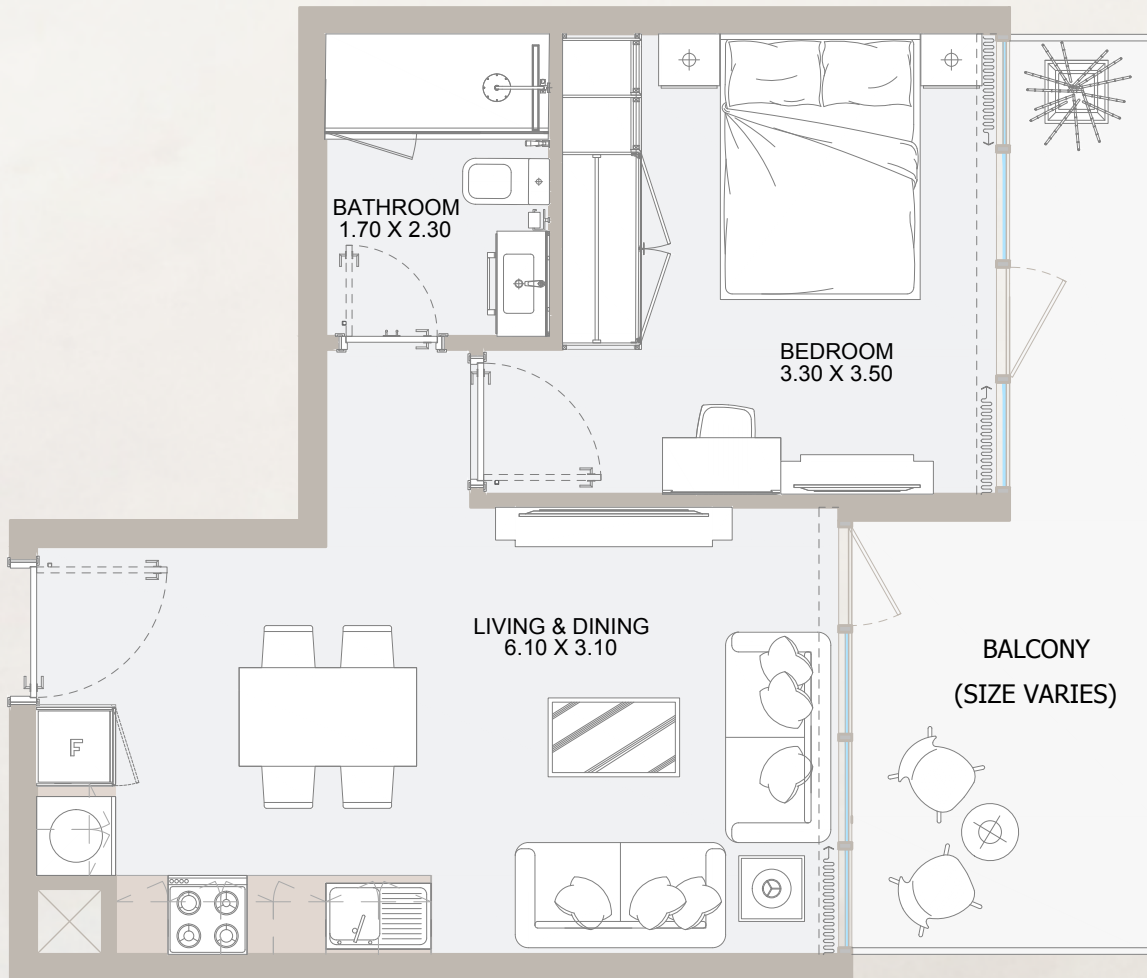


From 8<sup>th</sup> Floor to 44<sup>th</sup> Floor

Internal Area	463 sq.ft
Outdoor Area	32 sq.ft
<b>Total Area</b>	<b>495 sq.ft</b>

All drawings and dimensions are approximate. Drawings are not to scale and are subject to change without notice. The developer reserves the right to make revisions. The units are measured at typical floors in the building and columns may vary in size depending on the floor level. The furnishing and accessories shown are for representation only. The availability, length and width of the balcony varies depending on which floor and which orientation the unit is located within the building. There will be slight differences in the internal areas between the same unit types depending on the shaft sizes that go through the units.

# 1B TYPE - A2

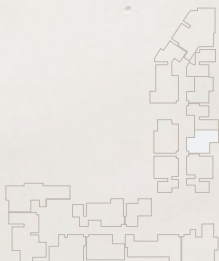
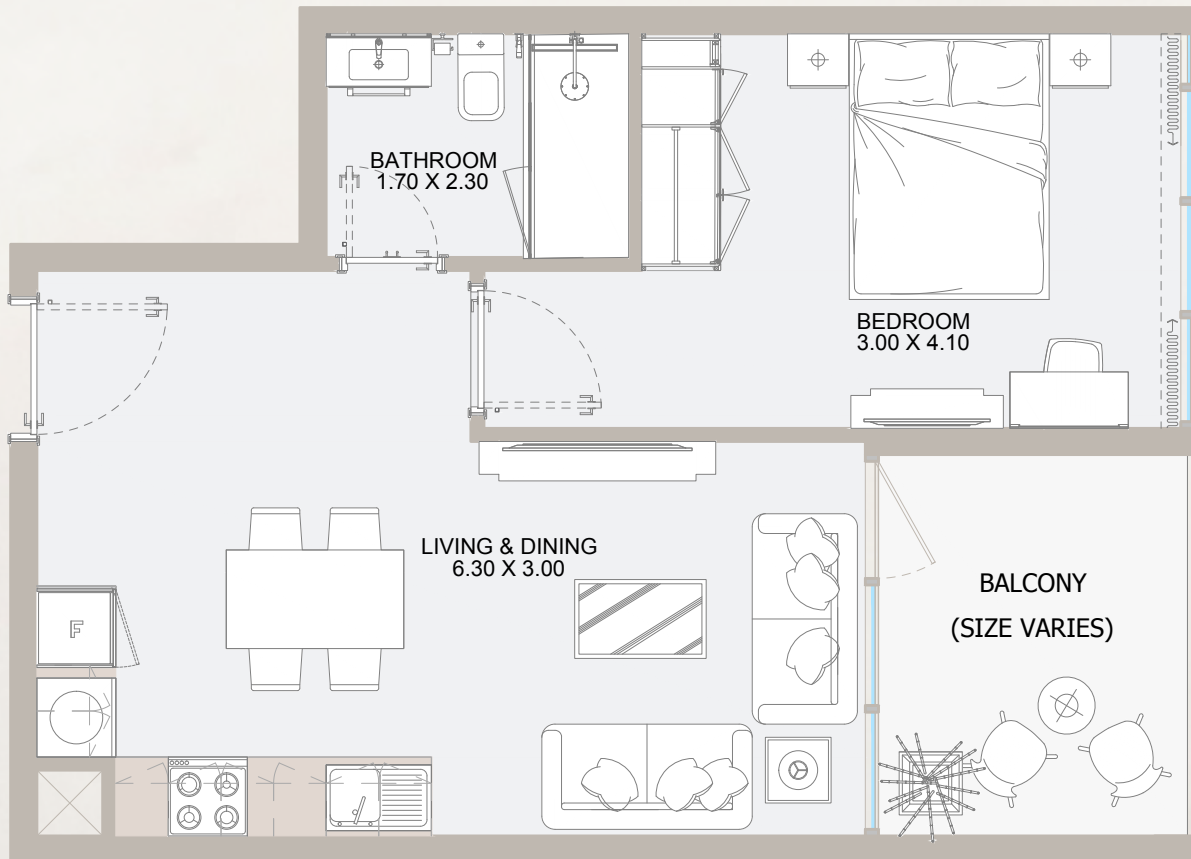


From 7<sup>th</sup> Floor to 44<sup>th</sup> Floor

Internal Area	451 sq.ft
Outdoor Area	77 sq.ft
<b>Total Area</b>	<b>528 sq.ft</b>

All drawings and dimensions are approximate. Drawings are not to scale and are subject to change without notice. The developer reserves the right to make revisions. The units are measured at typical floors in the building and columns may vary in size depending on the floor level. The furnishing and accessories shown are for representation only. The availability, length and width of the balcony varies depending on which floor and which orientation the unit is located within the building. There will be slight differences in the internal areas between the same unit types depending on the shaft sizes that go through the units.

# 1B TYPE - B1

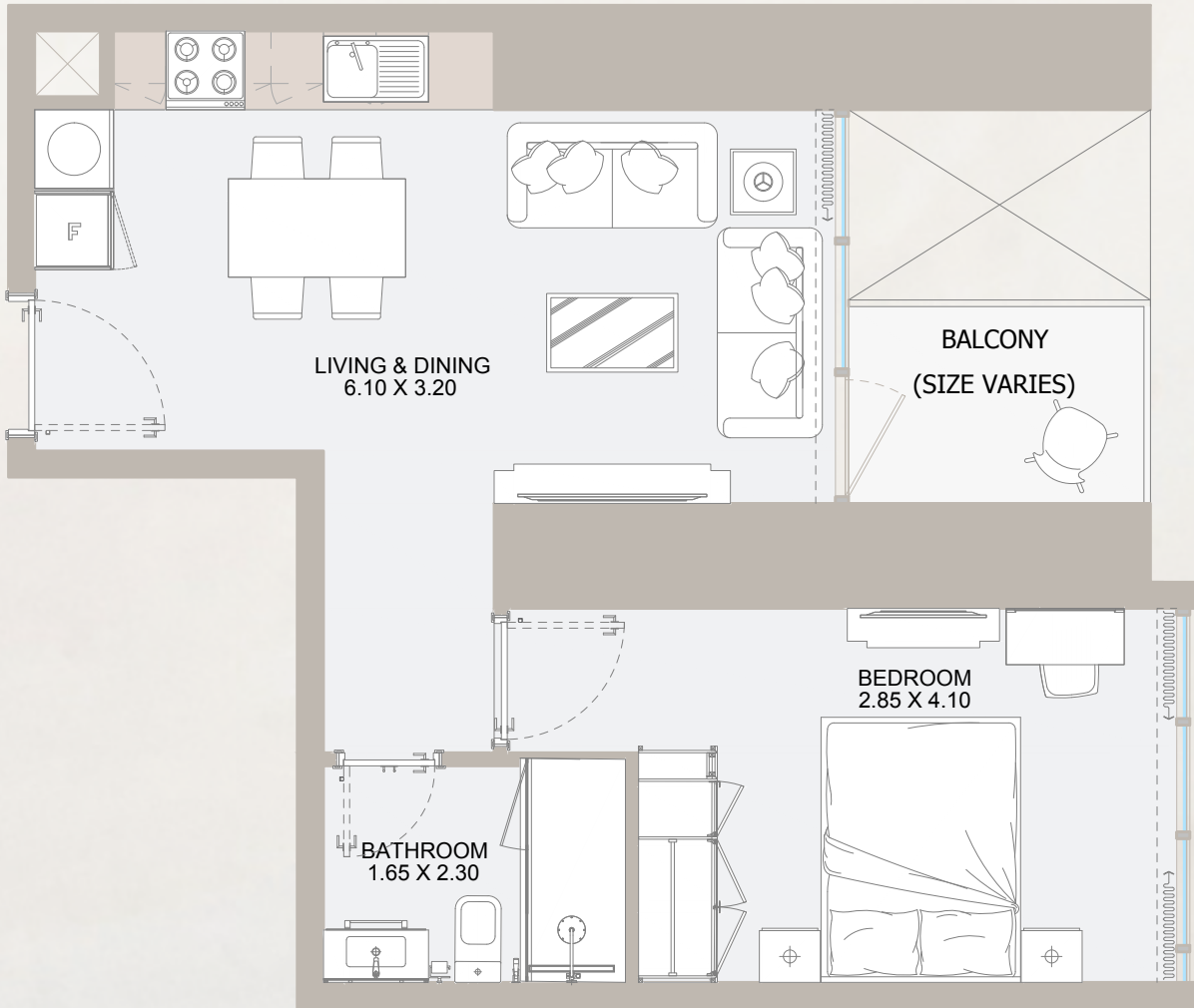


## From 7<sup>th</sup> Floor to 18<sup>th</sup> Floor

Internal Area	451 to 482 sq.ft
Outdoor Area	87 to 111 sq.ft
<b>Total Area</b>	<b>558 to 569 sq.ft</b>

All drawings and dimensions are approximate. Drawings are not to scale and are subject to change without notice. The developer reserves the right to make revisions. The units are measured at typical floors in the building and columns may vary in size depending on the floor level. The furnishing and accessories shown are for representation only. The availability, length and width of the balcony varies depending on which floor and which orientation the unit is located within the building. There will be slight differences in the internal areas between the same unit types depending on the shaft sizes that go through the units.

# 1B TYPE - B2

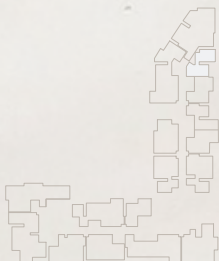
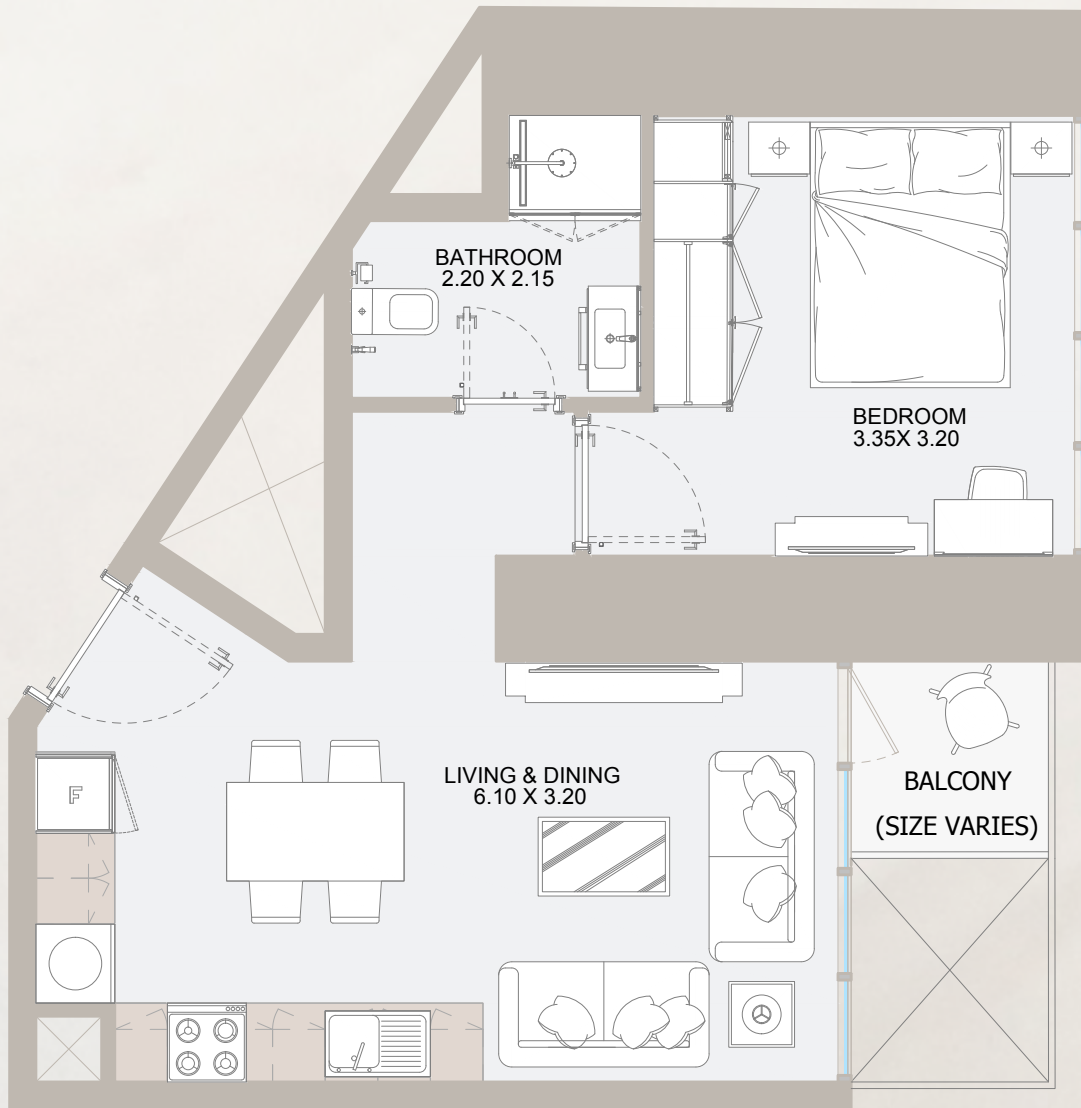


## From 7<sup>th</sup> Floor to 44<sup>th</sup> Floor

Internal Area	451 sq.ft
Outdoor Area	73 to 160 sq.ft
<b>Total Area</b>	<b>524 to 611 sq.ft</b>

All drawings and dimensions are approximate. Drawings are not to scale and are subject to change without notice. The developer reserves the right to make revisions. The units are measured at typical floors in the building and columns may vary in size depending on the floor level. The furnishing and accessories shown are for representation only. The availability, length and width of the balcony varies depending on which floor and which orientation the unit is located within the building. There will be slight differences in the internal areas between the same unit types depending on the shaft sizes that go through the units.

# 1B TYPE - C



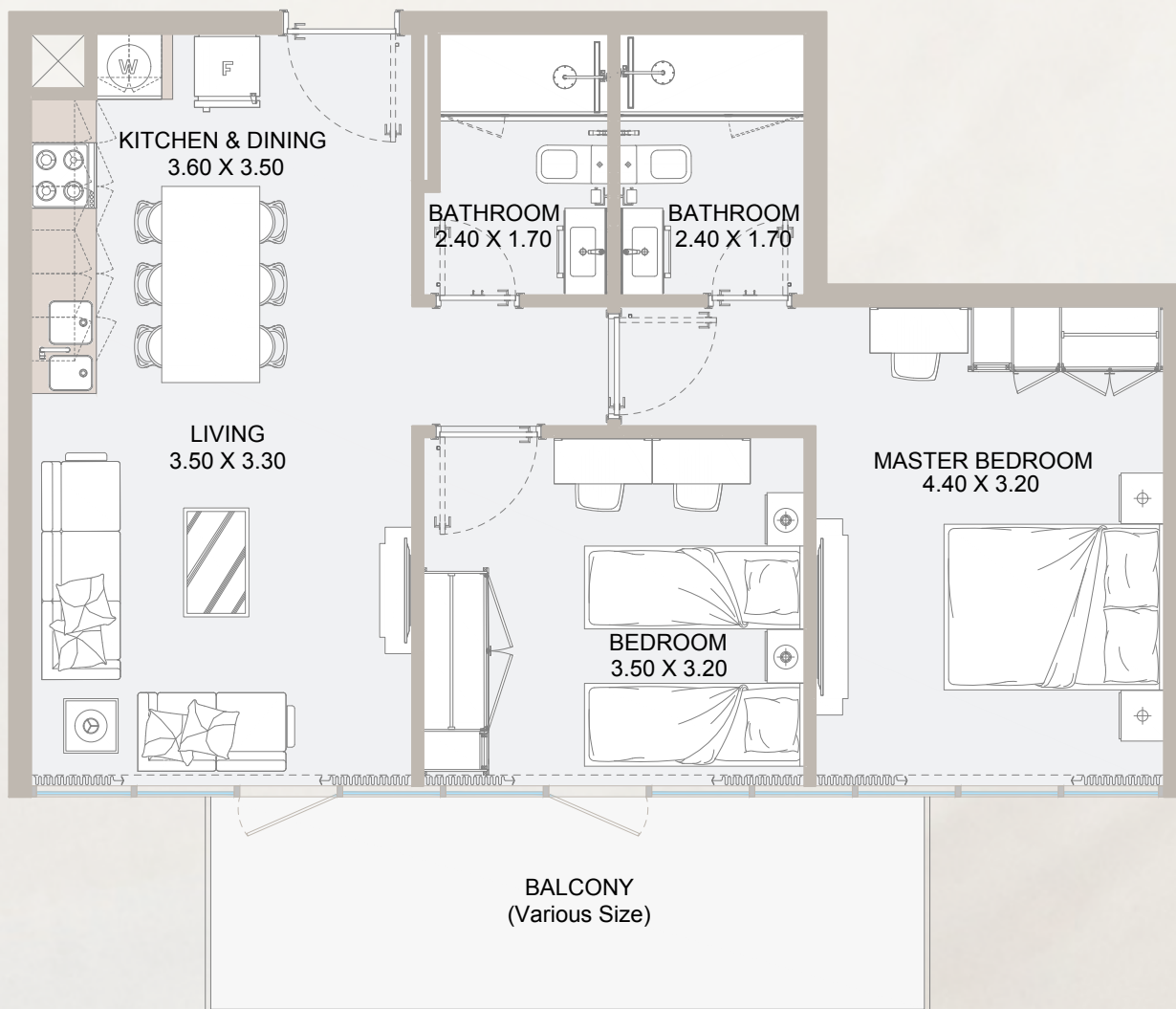
From 7<sup>th</sup> Floor to 44<sup>th</sup> Floor

Internal Area	468 sq.ft
Outdoor Area	42 to 105 sq.ft
<b>Total Area</b>	<b>510 to 573 sq.ft</b>

All drawings and dimensions are approximate. Drawings are not to scale and are subject to change without notice. The developer reserves the right to make revisions. The units are measured at typical floors in the building and columns may vary in size depending on the floor level. The furnishing and accessories shown are for representation only. The availability, length and width of the balcony varies depending on which floor and which orientation the unit is located within the building. There will be slight differences in the internal areas between the same unit types depending on the shaft sizes that go through the units.



# 2B TYPE - A1

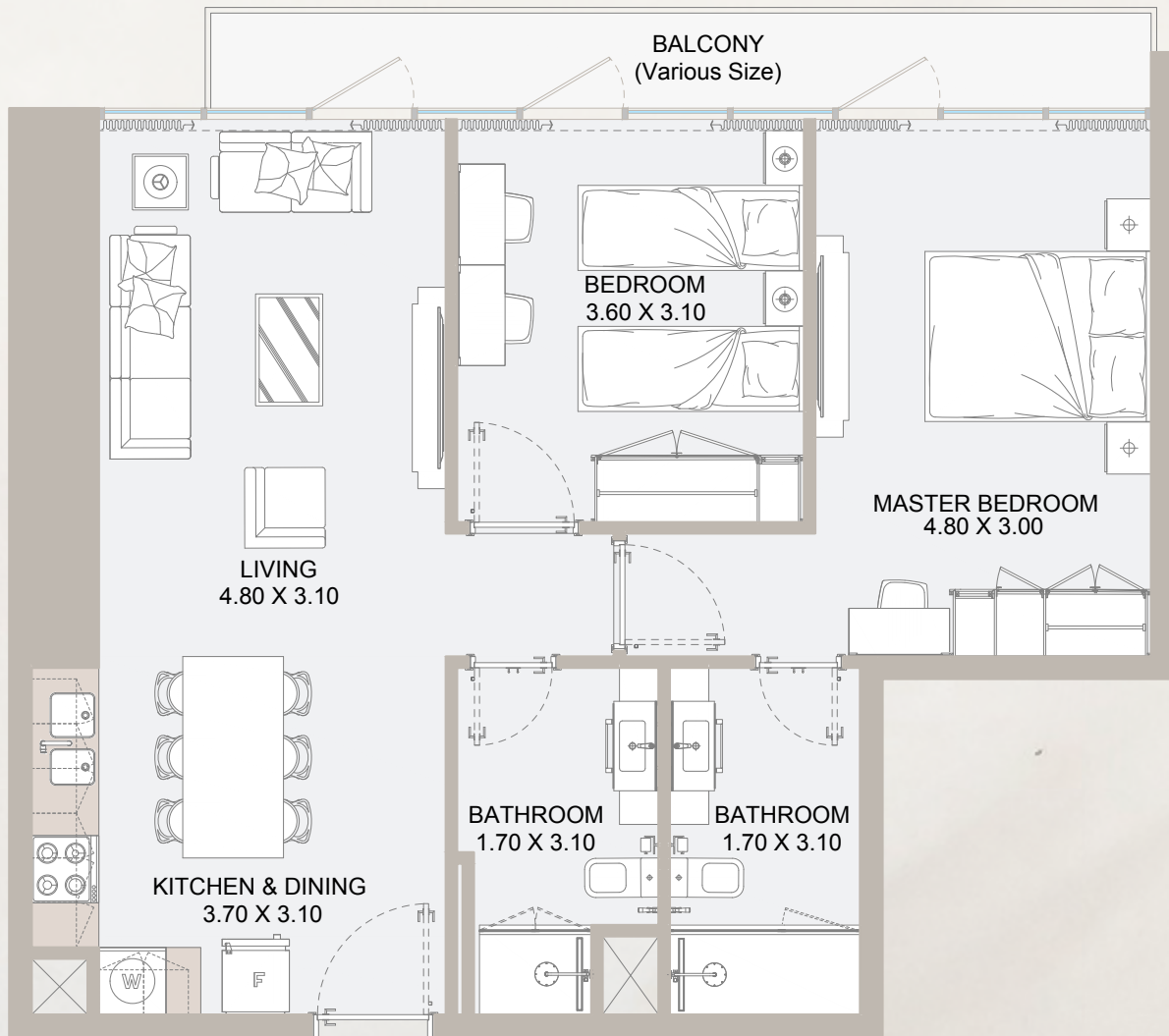


From 7<sup>th</sup> Floor to 45<sup>th</sup> Floor

Internal Area	702 sq.ft
Outdoor Area	157 to 241 sq.ft
<b>Total Area</b>	<b>859 to 943 sq.ft</b>

All drawings and dimensions are approximate. Drawings are not to scale and are subject to change without notice. The developer reserves the right to make revisions. The units are measured at typical floors in the building and columns may vary in size depending on the floor level. The furnishing and accessories shown are for representation only. The availability, length and width of the balcony varies depending on which floor and which orientation the unit is located within the building. There will be slight differences in the internal areas between the same unit types depending on the shaft sizes that go through the units.

# 2B TYPE - A2

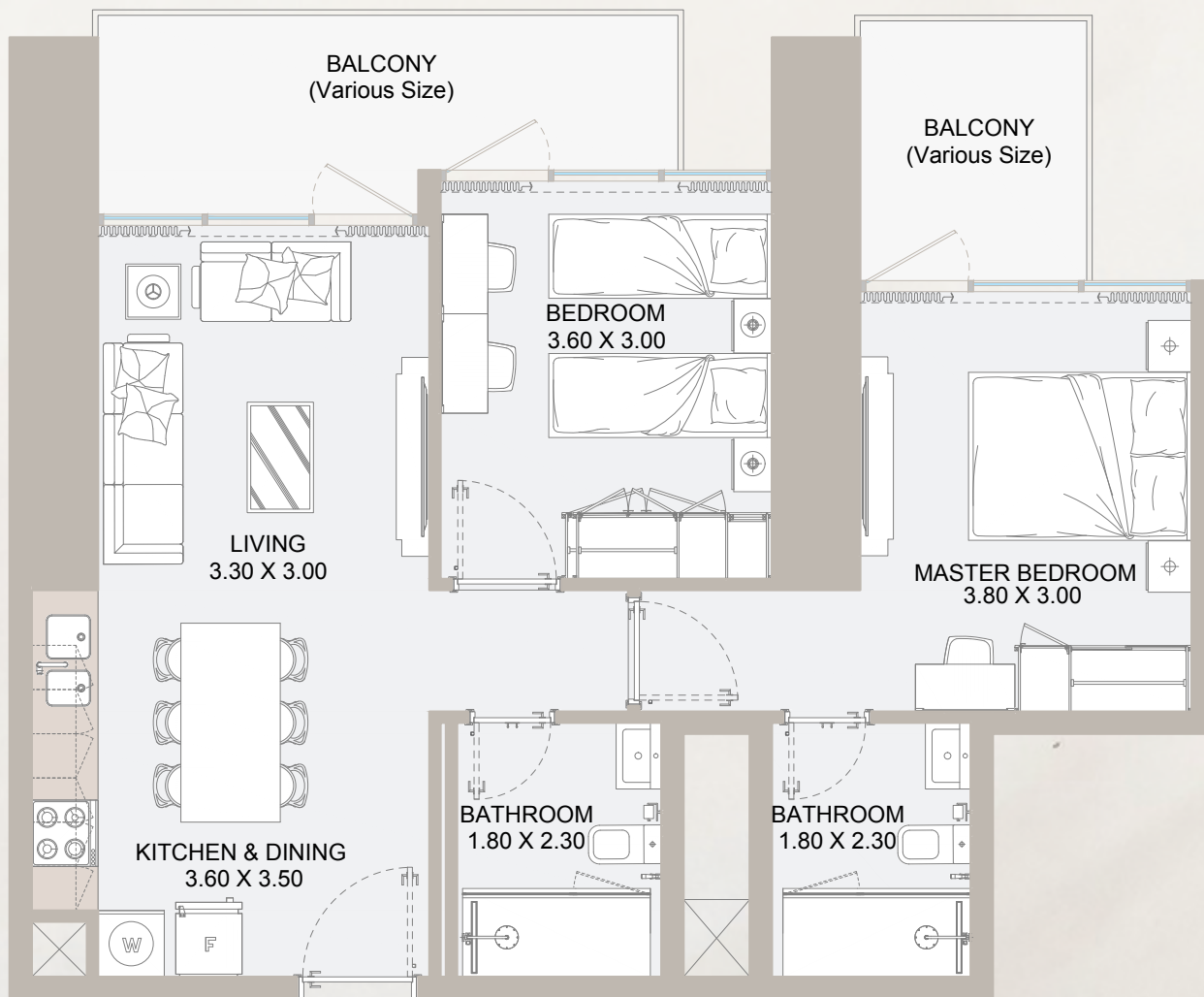


From 7<sup>th</sup> Floor to 45<sup>th</sup> Floor

Internal Area	702 sq.ft
Outdoor Area	157 to 182 sq.ft
<b>Total Area</b>	<b>859 to 884 sq.ft</b>

All drawings and dimensions are approximate. Drawings are not to scale and are subject to change without notice. The developer reserves the right to make revisions. The units are measured at typical floors in the building and columns may vary in size depending on the floor level. The furnishing and accessories shown are for representation only. The availability, length and width of the balcony varies depending on which floor and which orientation the unit is located within the building. There will be slight differences in the internal areas between the same unit types depending on the shaft sizes that go through the units.

# 2B TYPE - A3

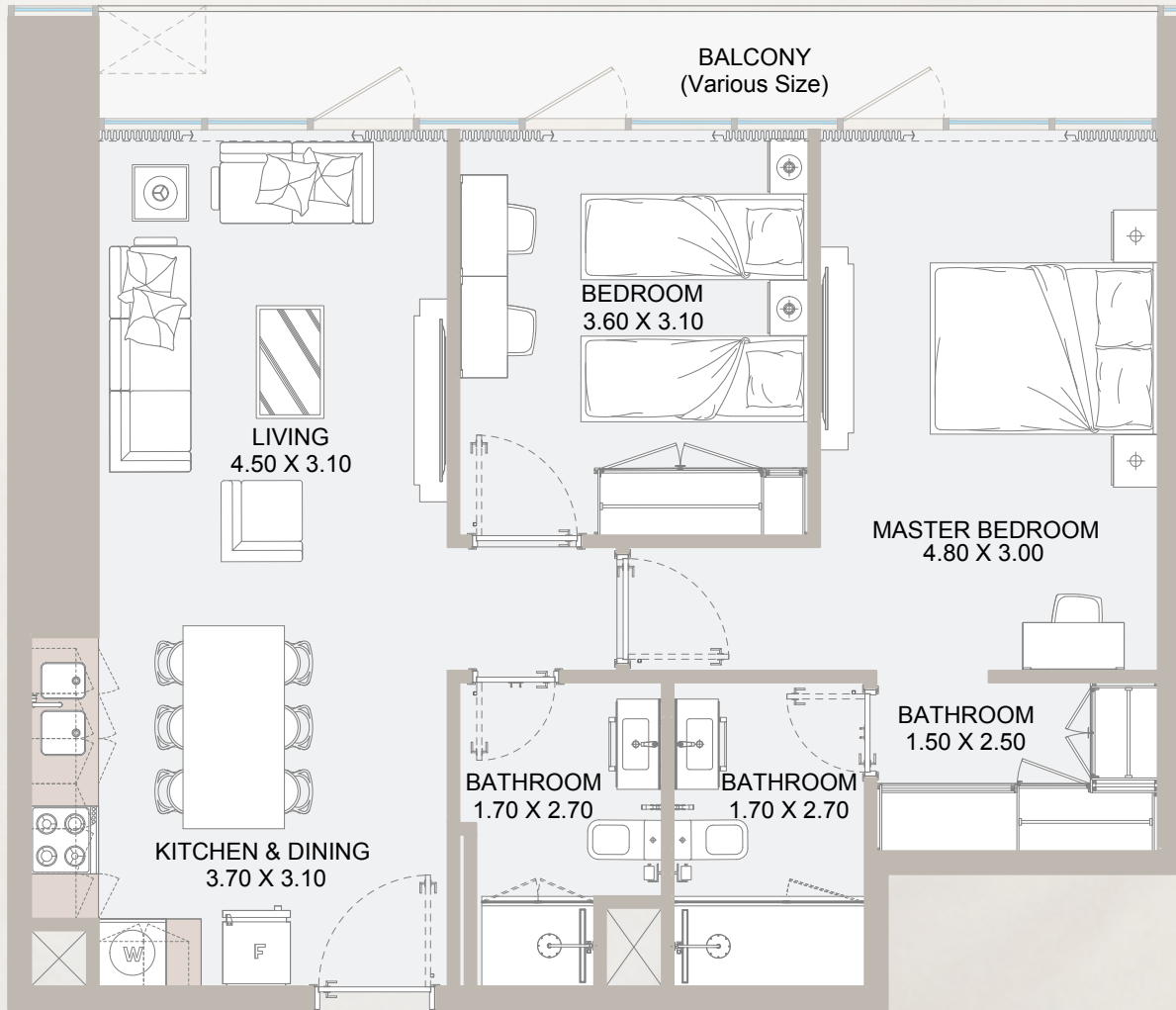


From 7<sup>th</sup> Floor to 18<sup>th</sup> Floor

Internal Area	701 sq.ft
Outdoor Area	180 to 251 sq.ft
<b>Total Area</b>	<b>881 to 952 sq.ft</b>

All drawings and dimensions are approximate. Drawings are not to scale and are subject to change without notice. The developer reserves the right to make revisions. The units are measured at typical floors in the building and columns may vary in size depending on the floor level. The furnishing and accessories shown are for representation only. The availability, length and width of the balcony varies depending on which floor and which orientation the unit is located within the building. There will be slight differences in the internal areas between the same unit types depending on the shaft sizes that go through the units.

# 2B TYPE - A4

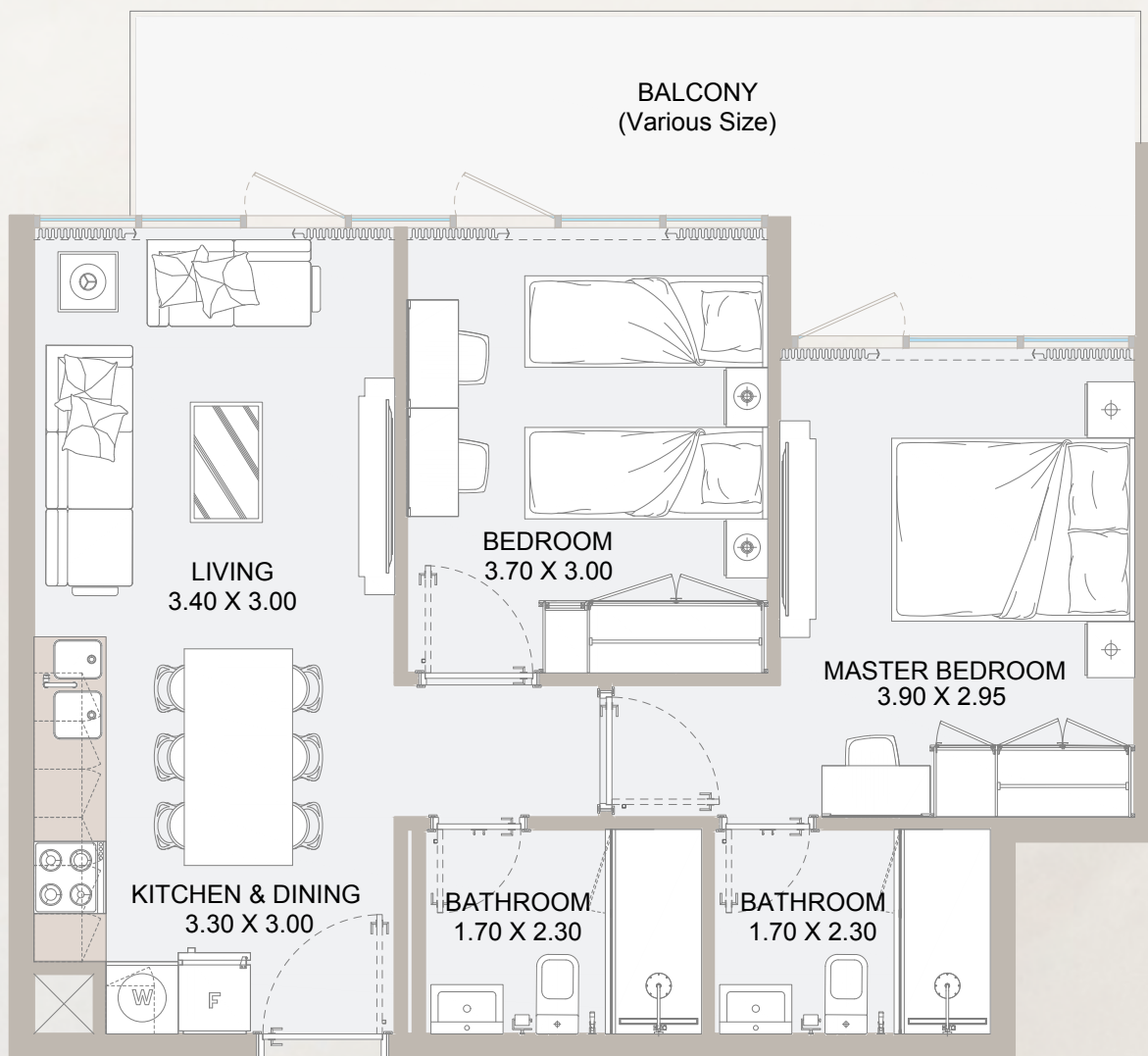


## From 7<sup>th</sup> Floor

Internal Area	702 sq.ft
Outdoor Area	241 sq.ft
<b>Total Area</b>	<b>943 sq.ft</b>

All drawings and dimensions are approximate. Drawings are not to scale and are subject to change without notice. The developer reserves the right to make revisions. The units are measured at typical floors in the building and columns may vary in size depending on the floor level. The furnishing and accessories shown are for representation only. The availability, length and width of the balcony varies depending on which floor and which orientation the unit is located within the building. There will be slight differences in the internal areas between the same unit types depending on the shaft sizes that go through the units.

# 2B TYPE - B1

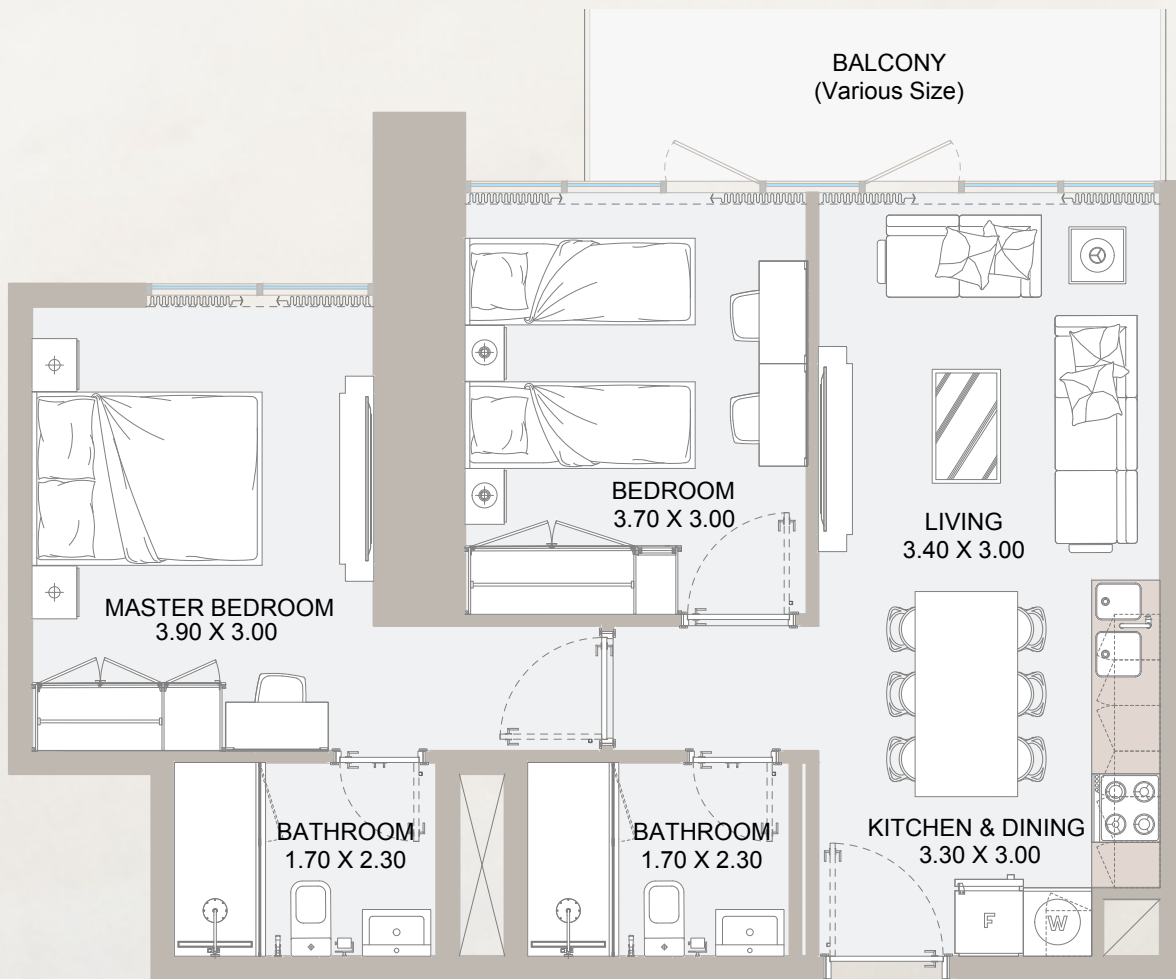


From 7<sup>th</sup> Floor to 44<sup>th</sup> Floor

Internal Area	682 sq.ft
Outdoor Area	158 to 407 sq.ft
<b>Total Area</b>	<b>840 to 1,089 sq.ft</b>

All drawings and dimensions are approximate. Drawings are not to scale and are subject to change without notice. The developer reserves the right to make revisions. The units are measured at typical floors in the building and columns may vary in size depending on the floor level. The furnishing and accessories shown are for representation only. The availability, length and width of the balcony varies depending on which floor and which orientation the unit is located within the building. There will be slight differences in the internal areas between the same unit types depending on the shaft sizes that go through the units.

# 2B TYPE - B2



From 7<sup>th</sup> Floor to 44<sup>th</sup> Floor

Internal Area	699 sq.ft
Outdoor Area	90 to 431 sq.ft
<b>Total Area</b>	<b>789 to 1,130 sq.ft</b>

All drawings and dimensions are approximate. Drawings are not to scale and are subject to change without notice. The developer reserves the right to make revisions. The units are measured at typical floors in the building and columns may vary in size depending on the floor level. The furnishing and accessories shown are for representation only. The availability, length and width of the balcony varies depending on which floor and which orientation the unit is located within the building. There will be slight differences in the internal areas between the same unit types depending on the shaft sizes that go through the units.

# 2B TYPE - C

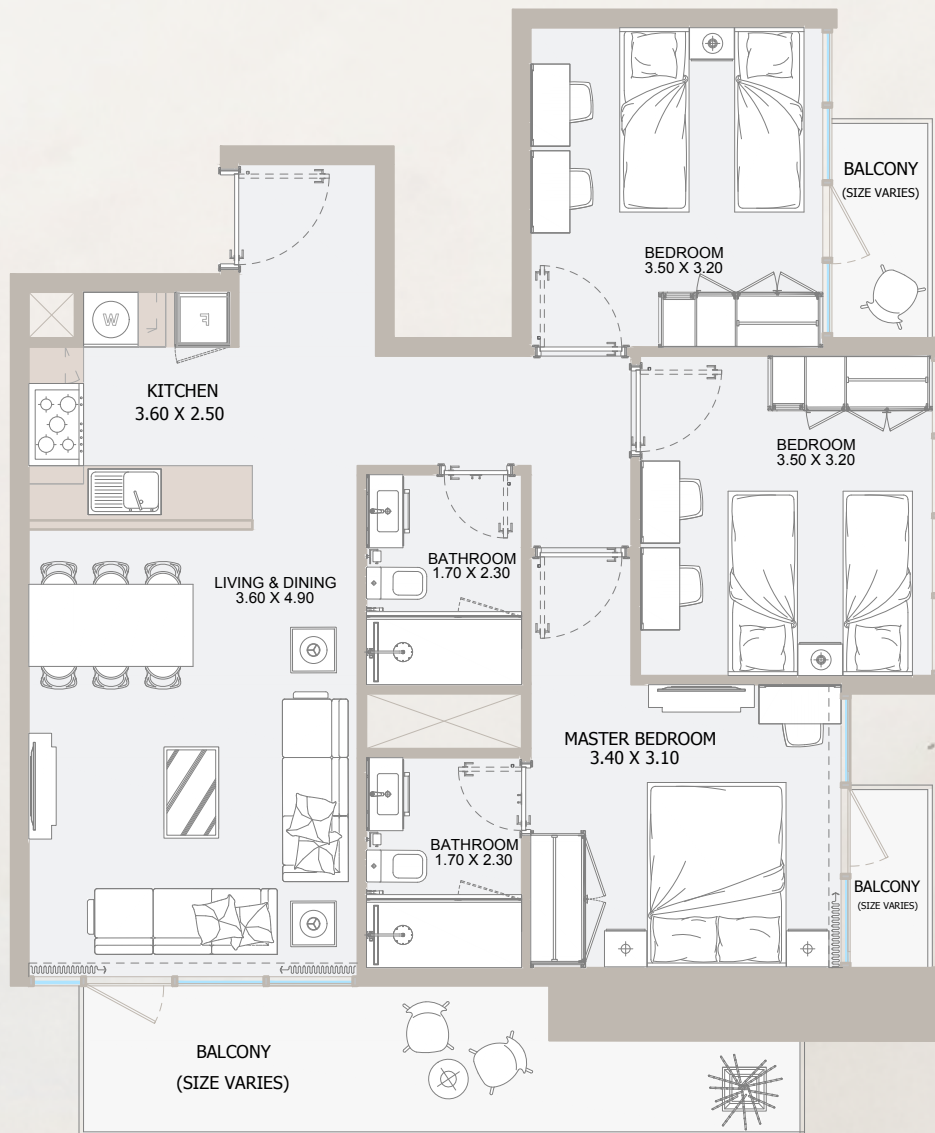


## 45<sup>th</sup> Floor

Internal Area	726 sq.ft
Outdoor Area	858 sq.ft
<b>Total Area</b>	<b>1,584 sq.ft</b>

All drawings and dimensions are approximate. Drawings are not to scale and are subject to change without notice. The developer reserves the right to make revisions. The units are measured at typical floors in the building and columns may vary in size depending on the floor level. The furnishing and accessories shown are for representation only. The availability, length and width of the balcony varies depending on which floor and which orientation the unit is located within the building. There will be slight differences in the internal areas between the same unit types depending on the shaft sizes that go through the units.

# 3B TYPE - A1



From 8<sup>th</sup> Floor to 45<sup>th</sup> Floor

Internal Area	907 sq.ft
Outdoor Area	170 to 194 sq.ft
<b>Total Area</b>	<b>1,077 to 1,102 sq.ft</b>

All drawings and dimensions are approximate. Drawings are not to scale and are subject to change without notice. The developer reserves the right to make revisions. The units are measured at typical floors in the building and columns may vary in size depending on the floor level. The furnishing and accessories shown are for representation only. The availability, length and width of the balcony varies depending on which floor and which orientation the unit is located within the building. There will be slight differences in the internal areas between the same unit types depending on the shaft sizes that go through the units.



# 3B TYPE - A2

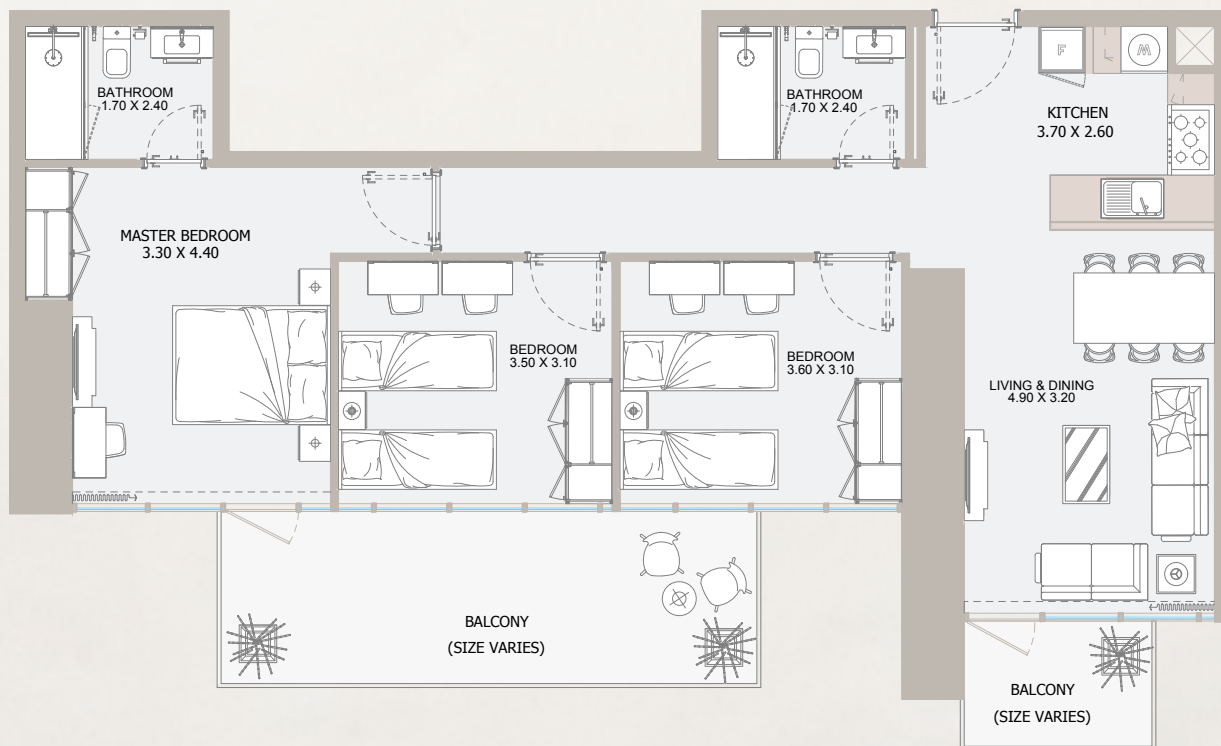


## 7<sup>th</sup> Floor

Internal Area	907 sq.ft
Outdoor Area	221 sq.ft
<b>Total Area</b>	<b>1,128 sq.ft</b>

All drawings and dimensions are approximate. Drawings are not to scale and are subject to change without notice. The developer reserves the right to make revisions. The units are measured at typical floors in the building and columns may vary in size depending on the floor level. The furnishing and accessories shown are for representation only. The availability, length and width of the balcony varies depending on which floor and which orientation the unit is located within the building. There will be slight differences in the internal areas between the same unit types depending on the shaft sizes that go through the units.

# 3B TYPE - B

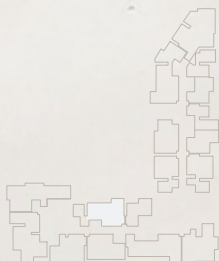
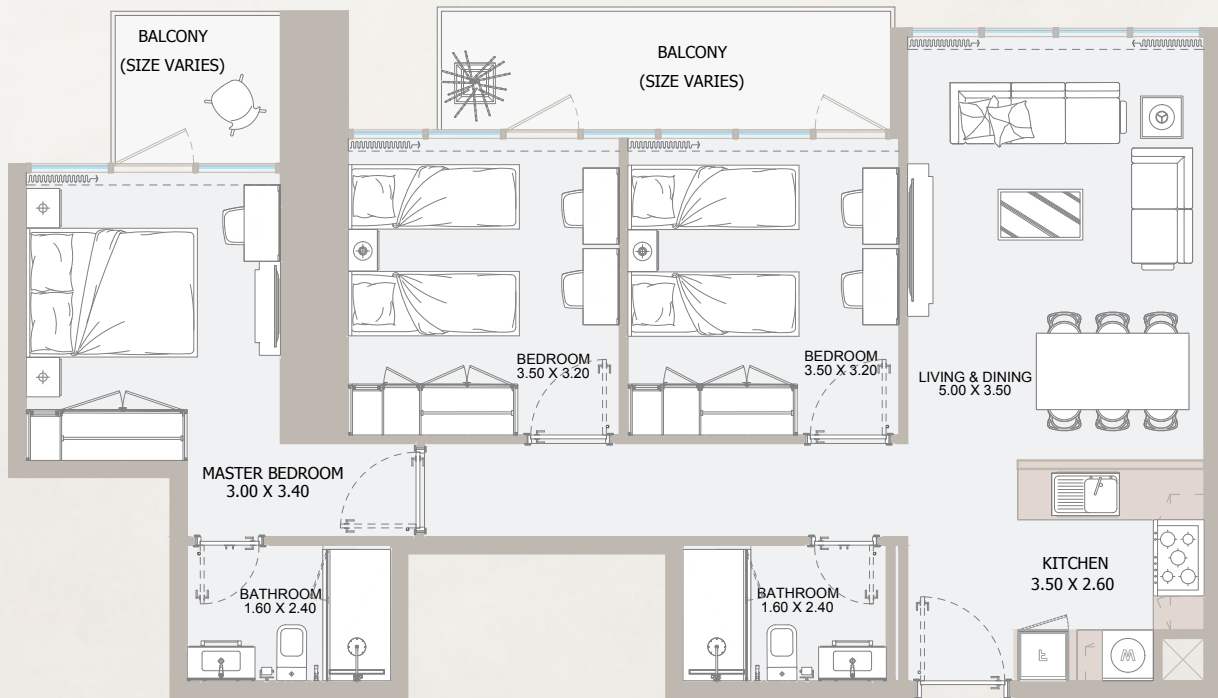


## From 7<sup>th</sup> Floor to 45<sup>th</sup> Floor

Internal Area	929 to 958 sq.ft
Outdoor Area	237 to 367 sq.ft
<b>Total Area</b>	<b>1,166 to 1,324 sq.ft</b>

All drawings and dimensions are approximate. Drawings are not to scale and are subject to change without notice. The developer reserves the right to make revisions. The units are measured at typical floors in the building and columns may vary in size depending on the floor level. The furnishing and accessories shown are for representation only. The availability, length and width of the balcony varies depending on which floor and which orientation the unit is located within the building. There will be slight differences in the internal areas between the same unit types depending on the shaft sizes that go through the units.

# 3B TYPE - C

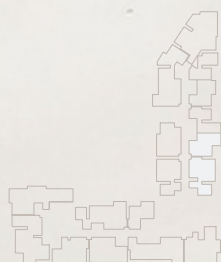
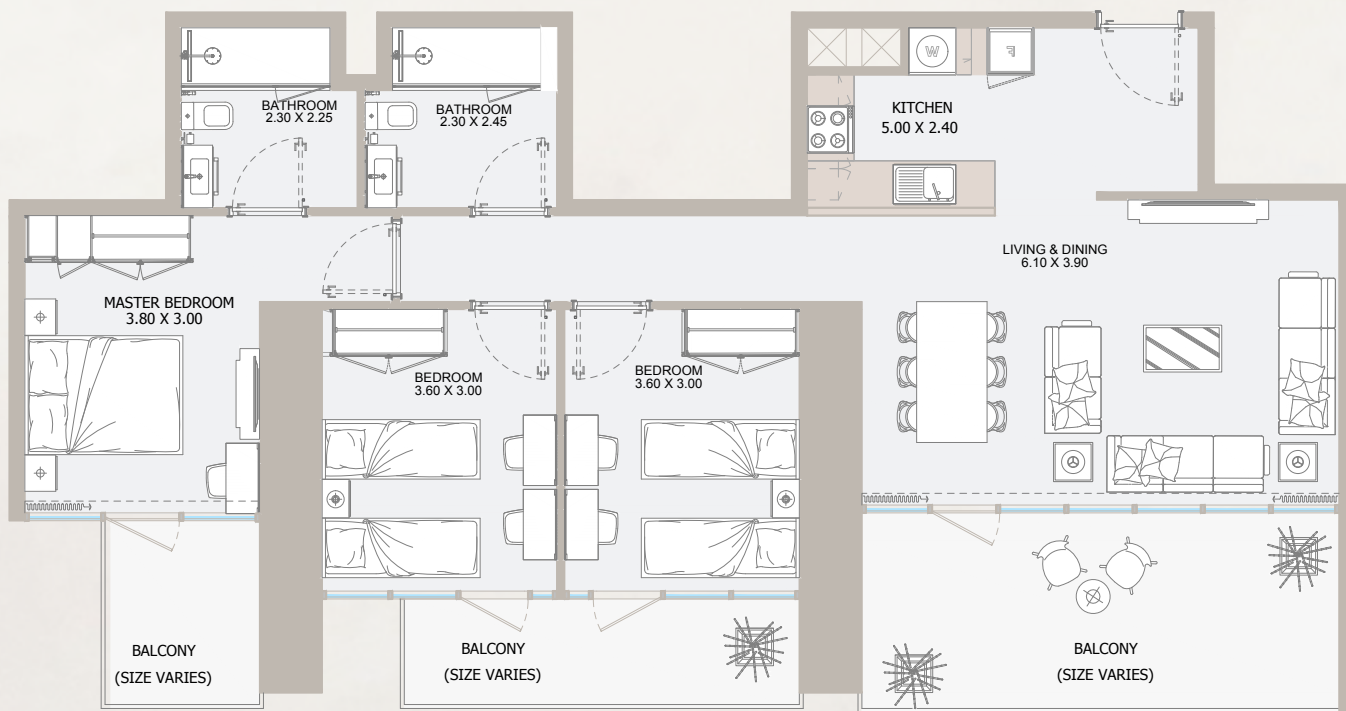


From 7<sup>th</sup> Floor to 44<sup>th</sup> Floor

Internal Area	949 sq.ft
Outdoor Area	1,06 to 678 sq.ft
<b>Total Area</b>	<b>1,055 to 1,627 sq.ft</b>

All drawings and dimensions are approximate. Drawings are not to scale and are subject to change without notice. The developer reserves the right to make revisions. The units are measured at typical floors in the building and columns may vary in size depending on the floor level. The furnishing and accessories shown are for representation only. The availability, length and width of the balcony varies depending on which floor and which orientation the unit is located within the building. There will be slight differences in the internal areas between the same unit types depending on the shaft sizes that go through the units.

# 3B TYPE - D



From 19<sup>th</sup> Floor to 44<sup>th</sup> Floor

Internal Area	968 sq.ft
Outdoor Area	419 to 448 sq.ft
<b>Total Area</b>	<b>1,387 to 1,416 sq.ft</b>

All drawings and dimensions are approximate. Drawings are not to scale and are subject to change without notice. The developer reserves the right to make revisions. The units are measured at typical floors in the building and columns may vary in size depending on the floor level. The furnishing and accessories shown are for representation only. The availability, length and width of the balcony varies depending on which floor and which orientation the unit is located within the building. There will be slight differences in the internal areas between the same unit types depending on the shaft sizes that go through the units.

# 3B PENTHOUSE TYPE - A

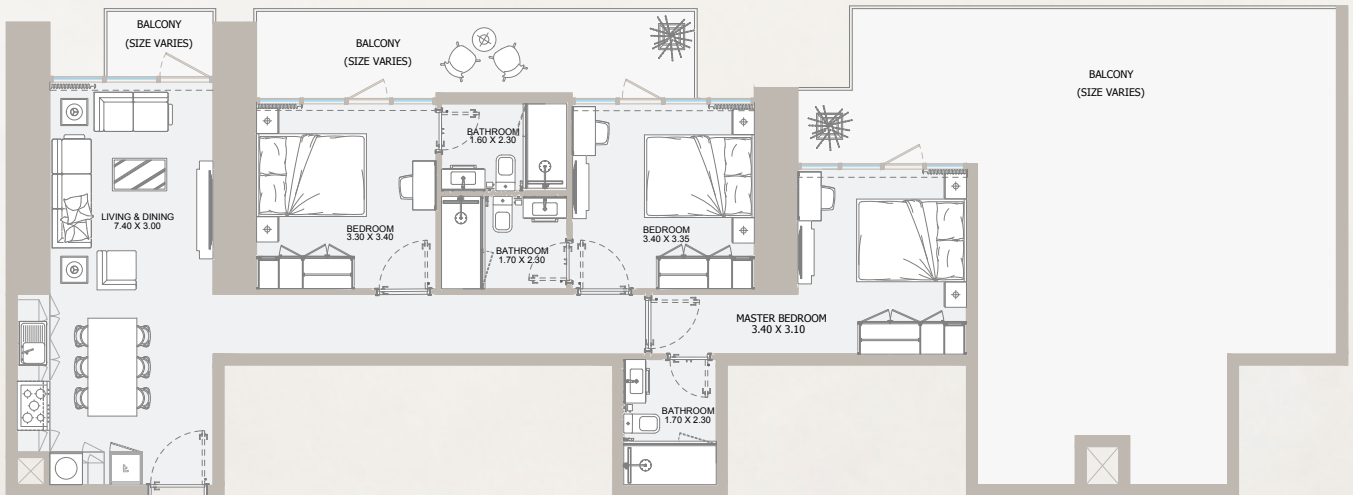


## 44<sup>th</sup> Floor

Internal Area	1,193 sq.ft
Outdoor Area	1,552 sq.ft
<b>Total Area</b>	<b>2,745 sq.ft</b>

All drawings and dimensions are approximate. Drawings are not to scale and are subject to change without notice. The developer reserves the right to make revisions. The units are measured at typical floors in the building and columns may vary in size depending on the floor level. The furnishing and accessories shown are for representation only. The availability, length and width of the balcony varies depending on which floor and which orientation the unit is located within the building. There will be slight differences in the internal areas between the same unit types depending on the shaft sizes that go through the units.

# 3B PENTHOUSE TYPE - B

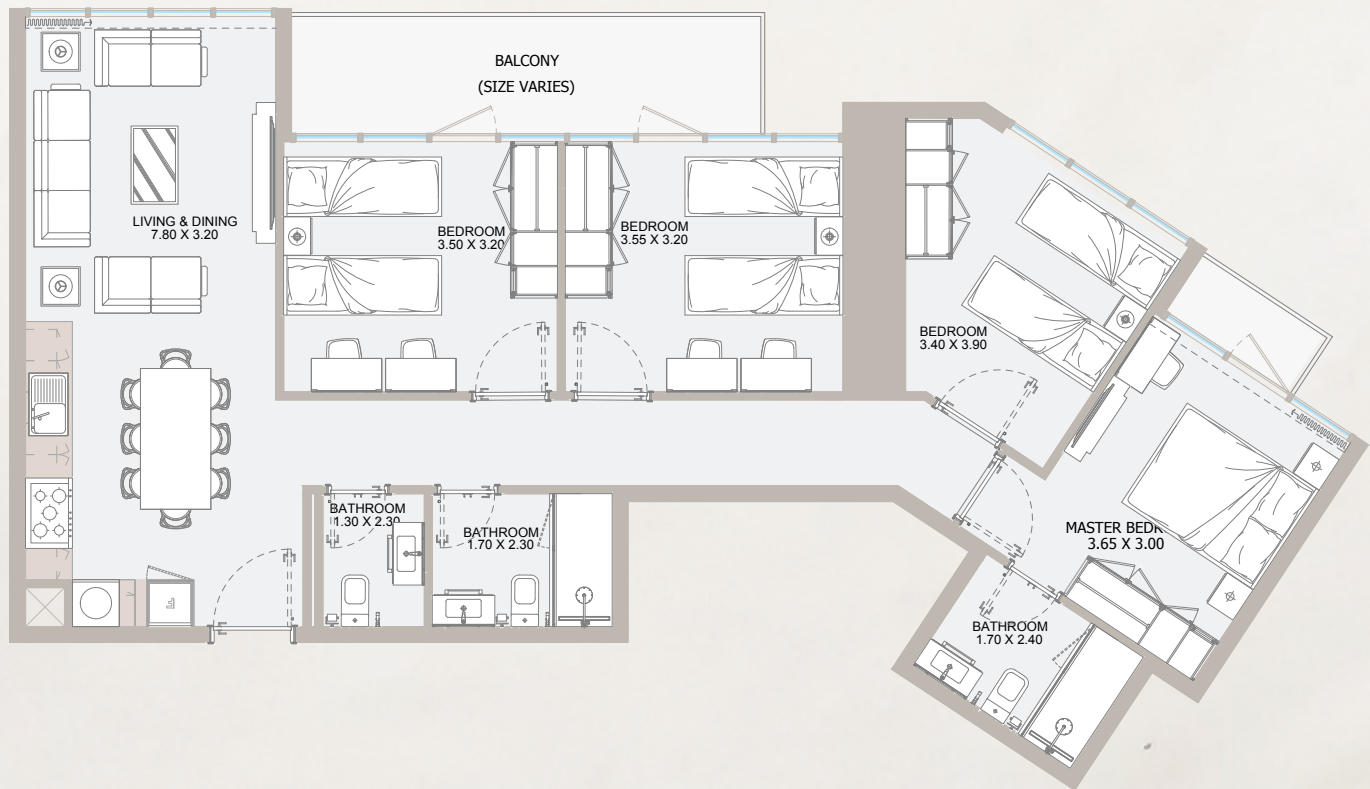


## 45<sup>th</sup> Floor

Internal Area	1,062 sq.ft
Outdoor Area	806 sq.ft
<b>Total Area</b>	<b>1,868 sq.ft</b>

All drawings and dimensions are approximate. Drawings are not to scale and are subject to change without notice. The developer reserves the right to make revisions. The units are measured at typical floors in the building and columns may vary in size depending on the floor level. The furnishing and accessories shown are for representation only. The availability, length and width of the balcony varies depending on which floor and which orientation the unit is located within the building. There will be slight differences in the internal areas between the same unit types depending on the shaft sizes that go through the units.

# 4B TYPE - A



## From 7<sup>th</sup> Floor to 44<sup>th</sup> Floor

Internal Area	1,054 sq.ft
Outdoor Area	1,74 to 661 sq.ft
<b>Total Area</b>	<b>1,228 to 1,715 sq.ft</b>

All drawings and dimensions are approximate. Drawings are not to scale and are subject to change without notice. The developer reserves the right to make revisions. The units are measured at typical floors in the building and columns may vary in size depending on the floor level. The furnishing and accessories shown are for representation only. The availability, length and width of the balcony varies depending on which floor and which orientation the unit is located within the building. There will be slight differences in the internal areas between the same unit types depending on the shaft sizes that go through the units.

# 4B TYPE - B



## From 8<sup>th</sup> Floor to 44<sup>th</sup> Floor

Internal Area	1,155 sq.ft
Outdoor Area	263 to 276 sq.ft
<b>Total Area</b>	<b>1,418 to 1,431 sq.ft</b>

All drawings and dimensions are approximate. Drawings are not to scale and are subject to change without notice. The developer reserves the right to make revisions. The units are measured at typical floors in the building and columns may vary in size depending on the floor level. The furnishing and accessories shown are for representation only. The availability, length and width of the balcony varies depending on which floor and which orientation the unit is located within the building. There will be slight differences in the internal areas between the same unit types depending on the shaft sizes that go through the units.



# 4B TYPE - C1



From 8<sup>th</sup> Floor to 43<sup>rd</sup> Floor

Internal Area	1,084 sq.ft
Outdoor Area	363 to 369 sq.ft
<b>Total Area</b>	<b>1,447 to 1,453 sq.ft</b>

All drawings and dimensions are approximate. Drawings are not to scale and are subject to change without notice. The developer reserves the right to make revisions. The units are measured at typical floors in the building and columns may vary in size depending on the floor level. The furnishing and accessories shown are for representation only. The availability, length and width of the balcony varies depending on which floor and which orientation the unit is located within the building. There will be slight differences in the internal areas between the same unit types depending on the shaft sizes that go through the units.

# 4B TYPE - C2

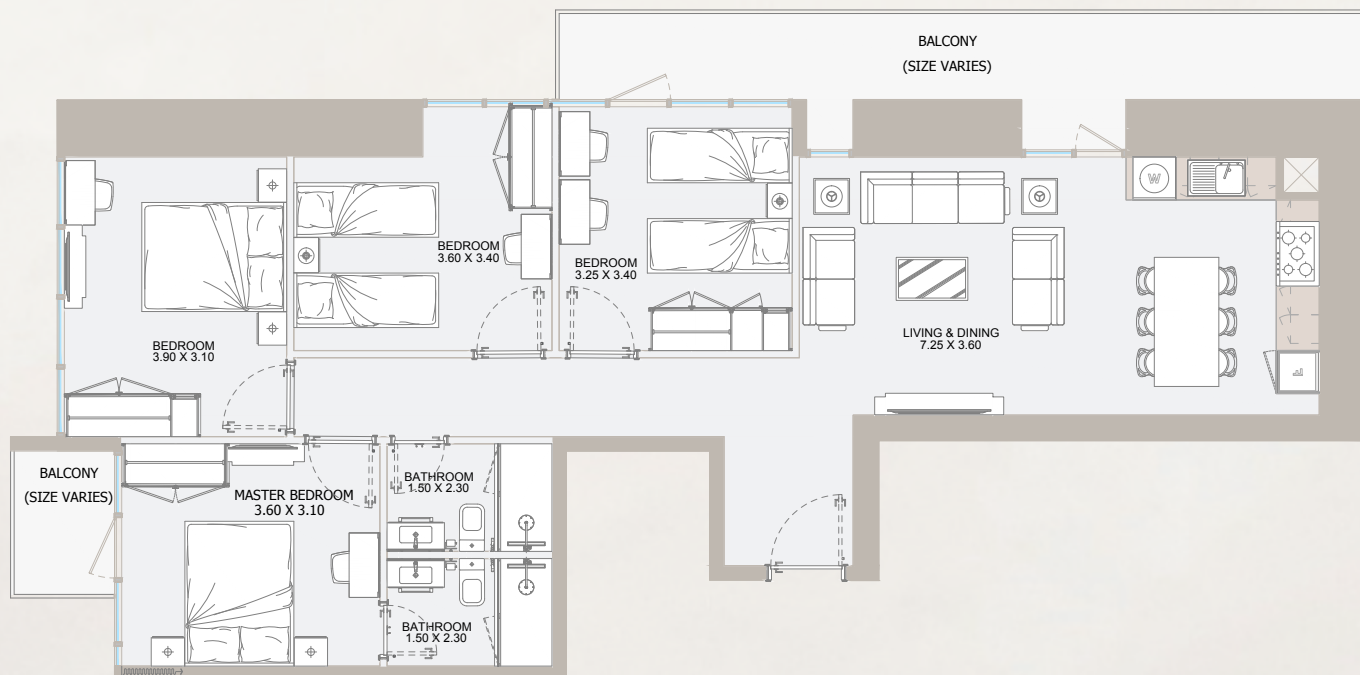


## 7<sup>th</sup> Floor

Internal Area	1,184 sq.ft
Outdoor Area	393 sq.ft
<b>Total Area</b>	<b>1,577 sq.ft</b>

All drawings and dimensions are approximate. Drawings are not to scale and are subject to change without notice. The developer reserves the right to make revisions. The units are measured at typical floors in the building and columns may vary in size depending on the floor level. The furnishing and accessories shown are for representation only. The availability, length and width of the balcony varies depending on which floor and which orientation the unit is located within the building. There will be slight differences in the internal areas between the same unit types depending on the shaft sizes that go through the units.

# 4B TYPE - D



### From 7<sup>th</sup> Floor to 43<sup>rd</sup> Floor

Internal Area	1,026 sq.ft
Outdoor Area	238 to 646 sq.ft
<b>Total Area</b>	<b>1,264 to 1672 sq.ft</b>

All drawings and dimensions are approximate. Drawings are not to scale and are subject to change without notice. The developer reserves the right to make revisions. The units are measured at typical floors in the building and columns may vary in size depending on the floor level. The furnishing and accessories shown are for representation only. The availability, length and width of the balcony varies depending on which floor and which orientation the unit is located within the building. There will be slight differences in the internal areas between the same unit types depending on the shaft sizes that go through the units.

# 4B PENTHOUSE TYPE - A

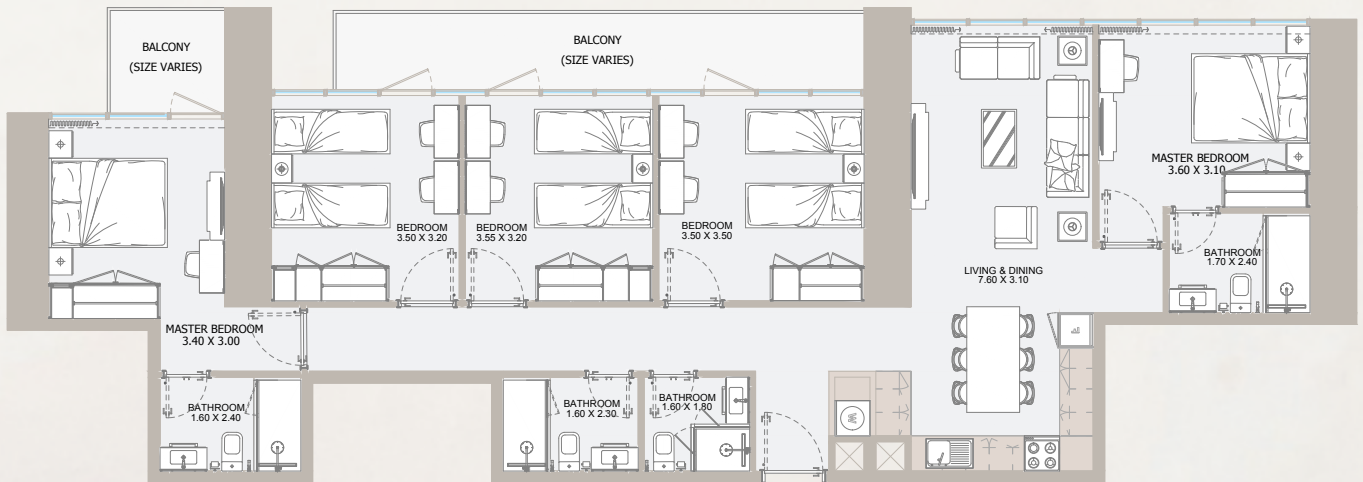


## 45<sup>th</sup> Floor

Internal Area	1,108 sq.ft
Outdoor Area	1,911 sq.ft
<b>Total Area</b>	<b>3,019 sq.ft</b>

All drawings and dimensions are approximate. Drawings are not to scale and are subject to change without notice. The developer reserves the right to make revisions. The units are measured at typical floors in the building and columns may vary in size depending on the floor level. The furnishing and accessories shown are for representation only. The availability, length and width of the balcony varies depending on which floor and which orientation the unit is located within the building. There will be slight differences in the internal areas between the same unit types depending on the shaft sizes that go through the units.

# 5B TYPE - A



## 45<sup>th</sup> Floor

Internal Area	1,384 sq.ft
Outdoor Area	210 sq.ft
<b>Total Area</b>	<b>1,594 sq.ft</b>

All drawings and dimensions are approximate. Drawings are not to scale and are subject to change without notice. The developer reserves the right to make revisions. The units are measured at typical floors in the building and columns may vary in size depending on the floor level. The furnishing and accessories shown are for representation only. The availability, length and width of the balcony varies depending on which floor and which orientation the unit is located within the building. There will be slight differences in the internal areas between the same unit types depending on the shaft sizes that go through the units.

ريپورتاج العقارية  
**Reportage.**  
Properties

**Abu Dhabi-UAE | Head Office**

Tamouh Tower  
28<sup>th</sup> Floor, Al Reem Island  
P.O. Box: 111949  
Tollfree: +971 800 77 55 2  
info@reportageuae.com

**Dubai-UAE**

Anantara Business Tower  
3<sup>rd</sup> Floor, Business Bay  
P.O. Box: 27446  
Tollfree: +971 800 77 55 2  
info@reportageuae.com

**Cairo-Egypt**

Building 217,  
North Teseen St.  
New Cairo  
T: +20 12 0008 1190  
info@reportageeg.com

**Istanbul-Türkiye**

Levent, Tekfen Tower  
8<sup>th</sup> Floor, Office 31, Büyükdere St.  
P.O. Box 34394, Şişli  
T: +90 530 774 9595  
info@reportage.com.tr

**Riyadh-KSA**

Building No. 3230  
Al Aflaj St., Al Suwaidi  
P.O. Box 12791  
T: +966 11 215 1110  
info@reportageuae.com

---

For more information, visit [reportageuae.com](http://reportageuae.com)  
or call 800 77 55 2 | +971 50 244 1078

---



**Legal Disclaimer:**

The information contained in this brochure is confidential and is for the exclusive use of the recipient. This brochure may not be reproduced, distributed, delivered, or furnished to any person without the prior written approval of Reportage Properties. No representation or warranty (expressed or implied) is made or can be given with respect to the accuracy or completeness of the information herein, or that any future offer of units or apartments in the project will conform to the terms described herein. Nothing in this leaflet should be constructed as financial, legal, tax or regulatory advice. All accessories such as electronics, furniture, white goods, decorative elements and so forth included in this brochure are not part of the standard unit and used for illustration purposes only. All plans, layouts, pictures, renderings, information and details included in this brochure are indicative only and may change at any time up to the final 'as built' status in accordance with final designs of the project and regulatory approvals and planning permissions.

**R.**