



VERDANA

الحياة بلونها الأخضر
WHERE LIFE IS EVERGREEN

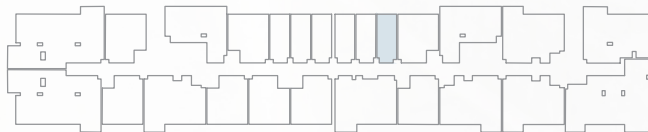
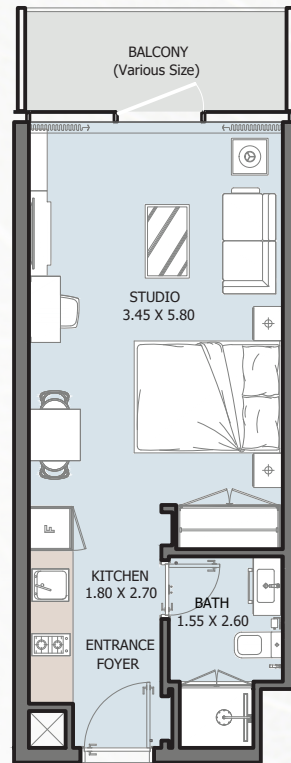


UNIT TYPES

All drawings and dimensions are approximate. Drawings are not to scale and are subject to change without notice. The developer reserves the right to make revisions. The units are measured at typical floors in the building and columns may vary in size depending on the floor level. The furnishing and accessories shown are for representation only. The availability, length and width of the balcony varies depending on which floor and which orientation the unit is located within the building. There will be slight differences in the internal areas between the same unit types depending on the shaft sizes that go through the units.

ST | Type A

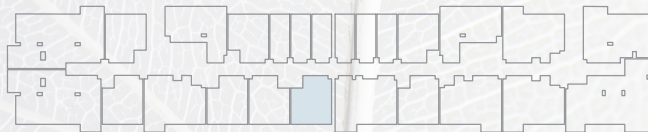
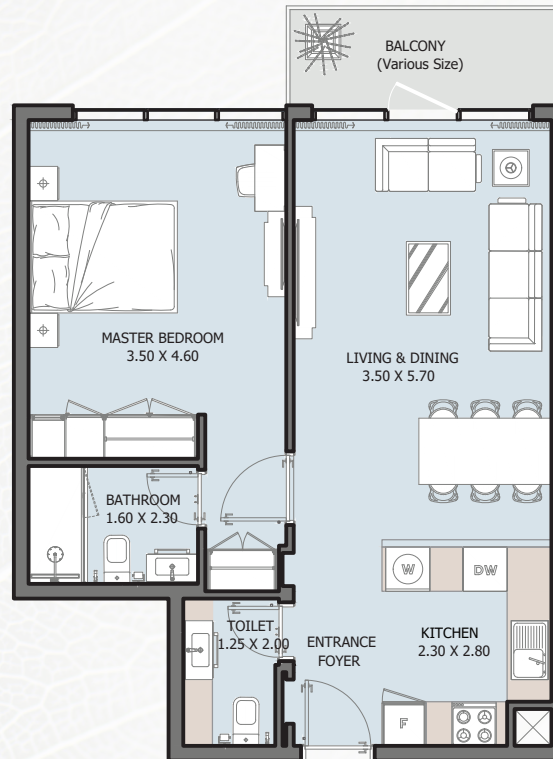
FROM 1st TO 15th FLOOR



Internal Area	336.59 sq.ft
Outdoor Area	26.59 to 154.14 sq.ft
Total Area	363.17 to 490.73 sq.ft

1B | Type A

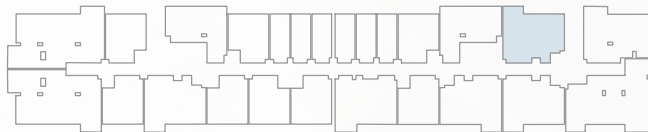
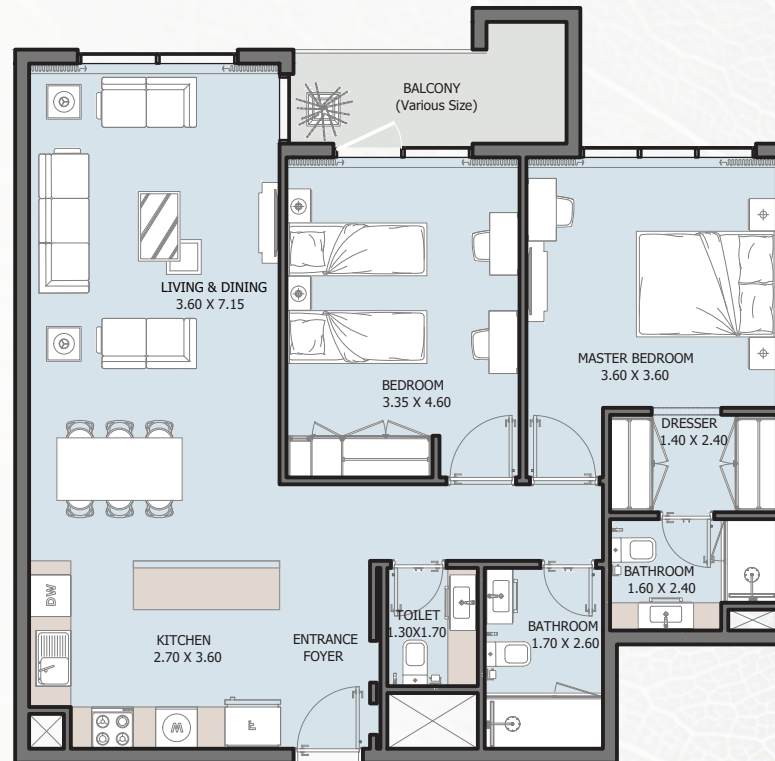
FROM 1st TO 15th FLOOR



Internal Area	637.22 sq.ft
Outdoor Area	39.93 to 317.21 sq.ft
Total Area	677.16 to 954.44 sq.ft

2B | Type A

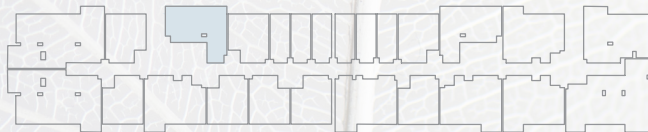
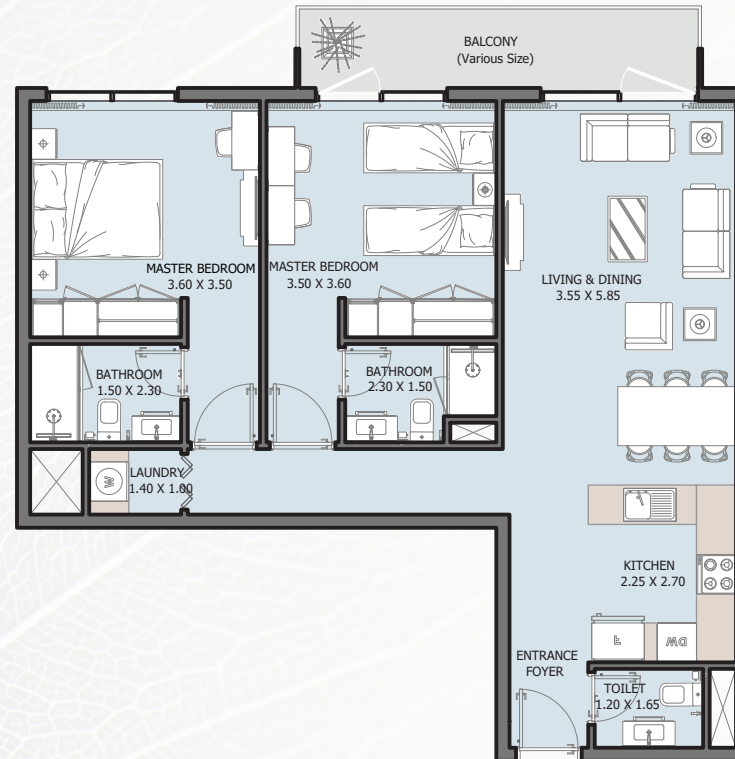
FROM 1st TO 15th FLOOR



Internal Area	1025.15 sq.ft
Outdoor Area	44.78 to 425.50 sq.ft
Total Area	1069.93 to 1450.65 sq.ft

2B | Type B

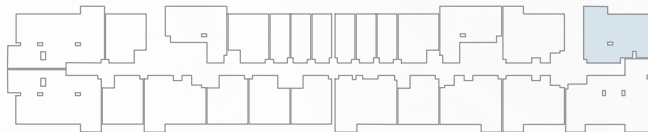
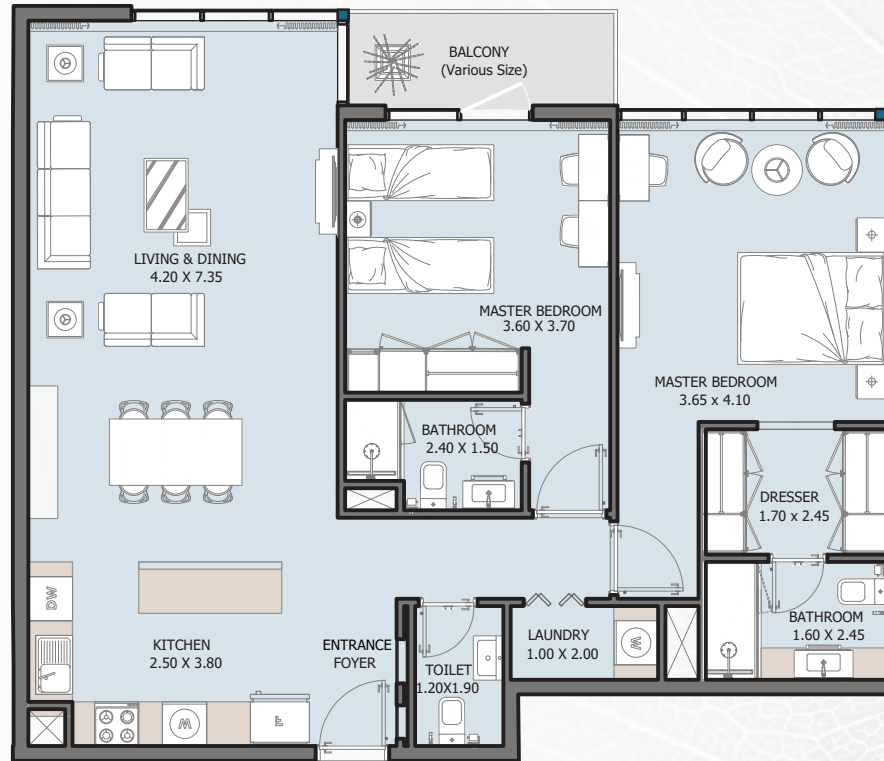
FROM 1st TO 15th FLOOR



Internal Area	897.60 sq.ft
Outdoor Area	70.83 to 312.15 sq.ft
Total Area	968.43 to 1209.75 sq.ft

2B | Type C

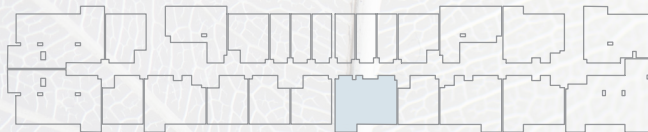
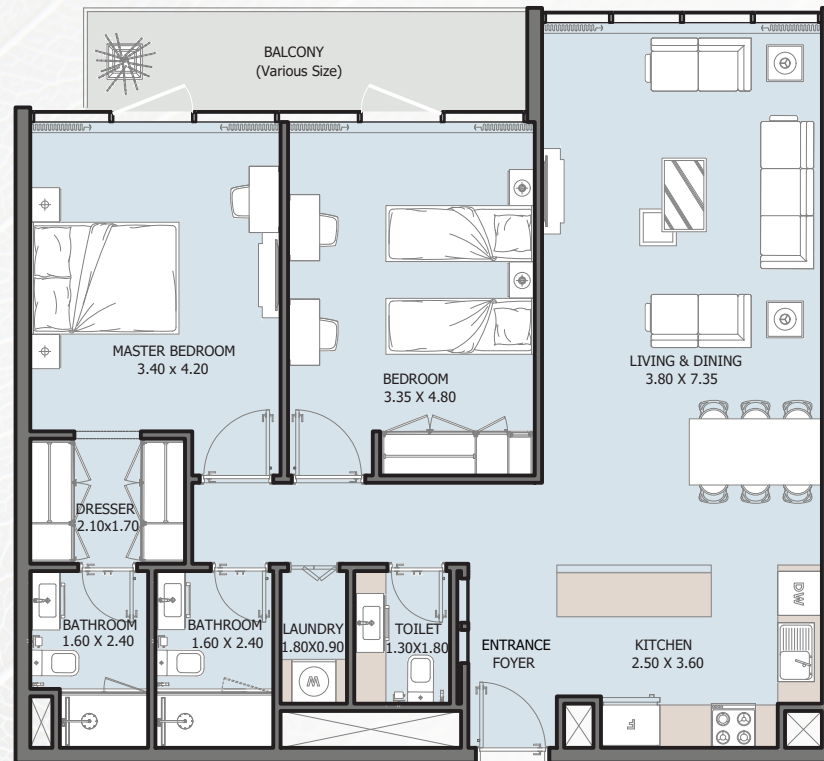
FROM 1st TO 15th FLOOR



Internal Area	1130.42 sq.ft
Outdoor Area	48.11 to 450.90 sq.ft
Total Area	1178.54 to 1581.32 sq.ft

2B | Type D

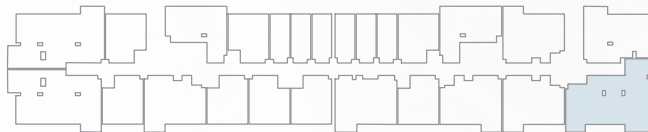
FROM 1st TO 4th FLOOR



Internal Area	1066.27 sq.ft
Outdoor Area	83.64 to 239.60 sq.ft
Total Area	1149.91 to 1305.88 sq.ft

3B | Type A

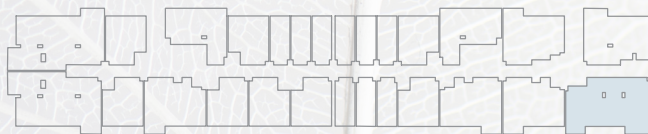
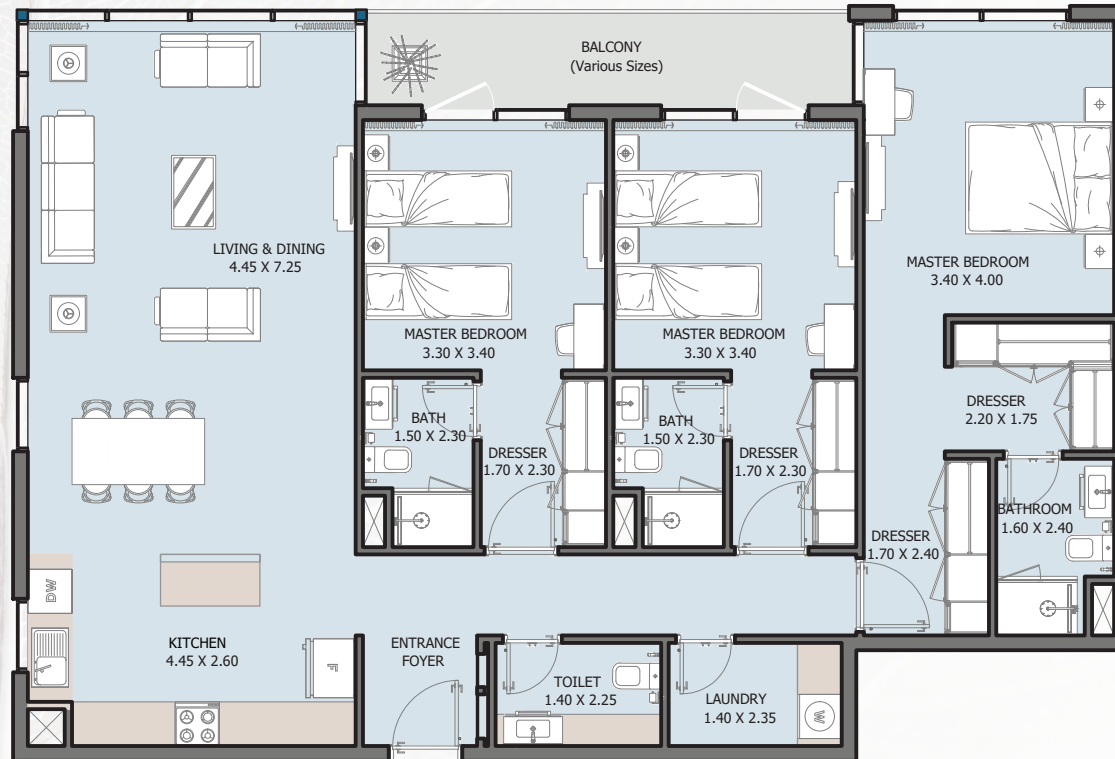
FROM 1st TO 15th FLOOR



Internal Area	1621.80 sq.ft
Outdoor Area	87.83 to 310.32 sq.ft
Total Area	1709.63 to 1932.12 sq.ft

3B | Type B

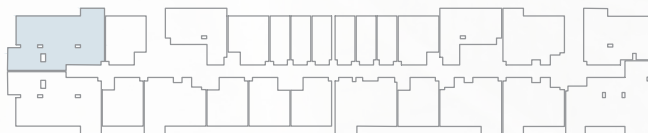
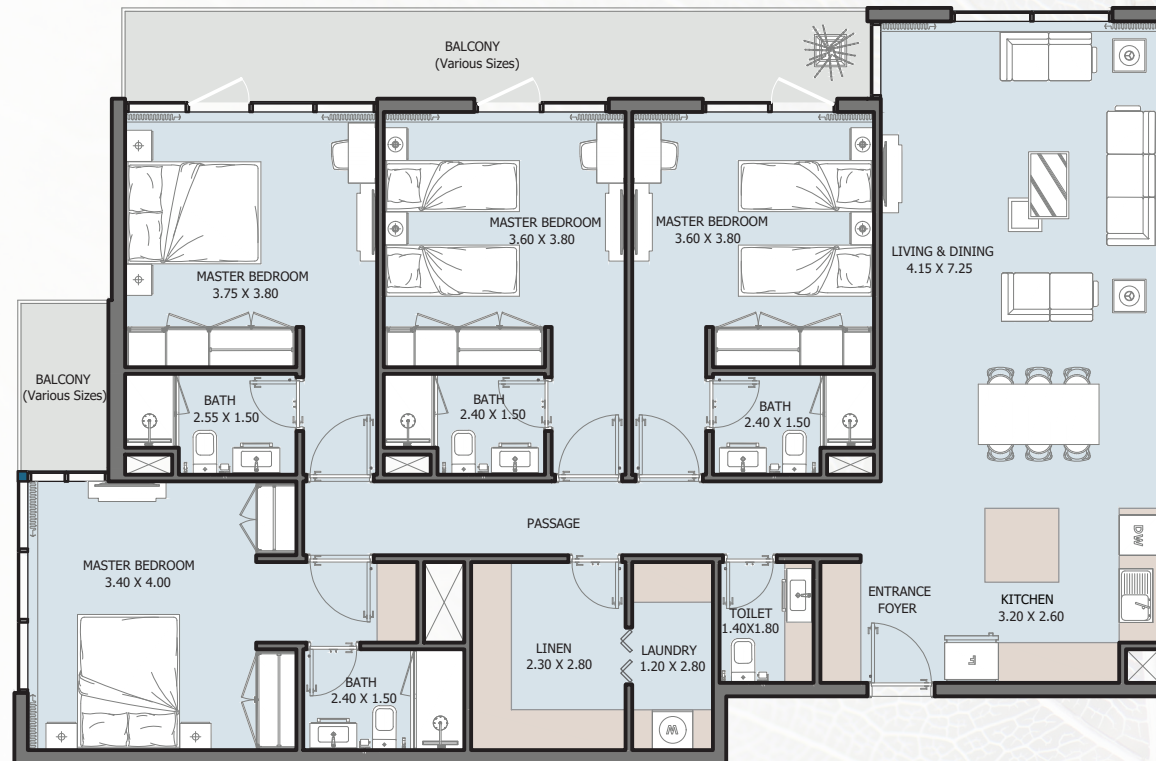
9th FLOOR



Internal Area	1473.15 sq.ft
Outdoor Area	87.83 sq.ft
Total Area	1560.98 sq.ft

4B | Type A

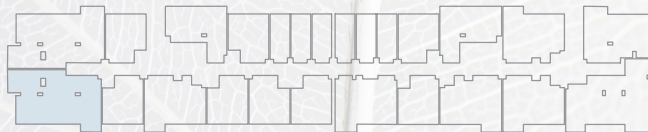
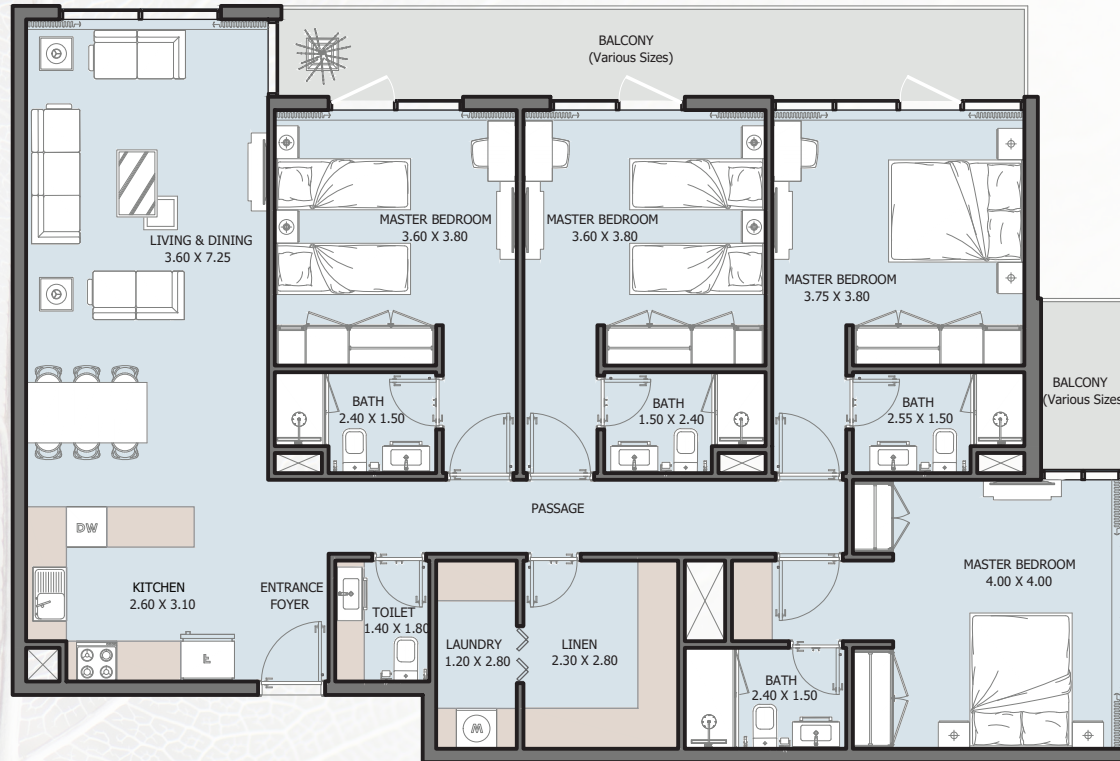
FROM 1st TO 15th FLOOR



Internal Area	1688.10 sq.ft
Outdoor Area	154.57 to 631.41 sq.ft
Total Area	1842.67 to 2319.51 sq.ft

4B | Type B

FROM 1st TO 15th FLOOR



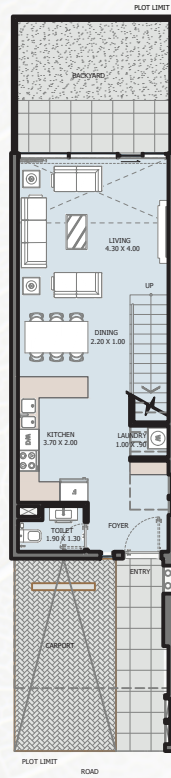
Internal Area	1628.04 sq.ft
Outdoor Area	154.68 to 363.07 sq.ft
Total Area	1782.72 to 1991.11 sq.ft



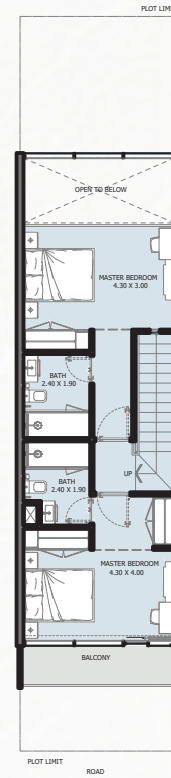
TOWNHOUSES

2B | Townhouse

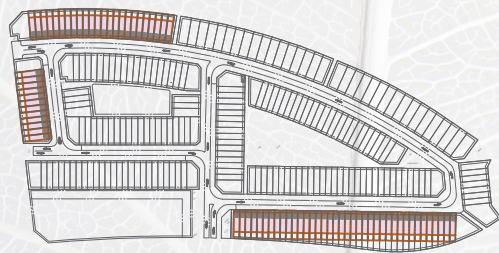
TYPE A



GROUND FLOOR



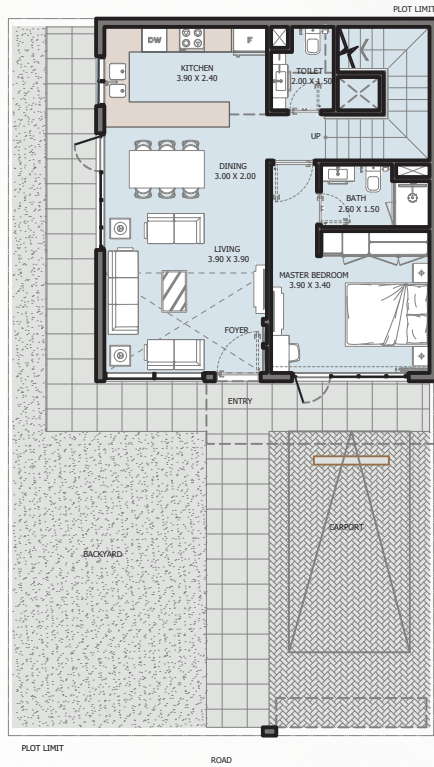
1ST FLOOR



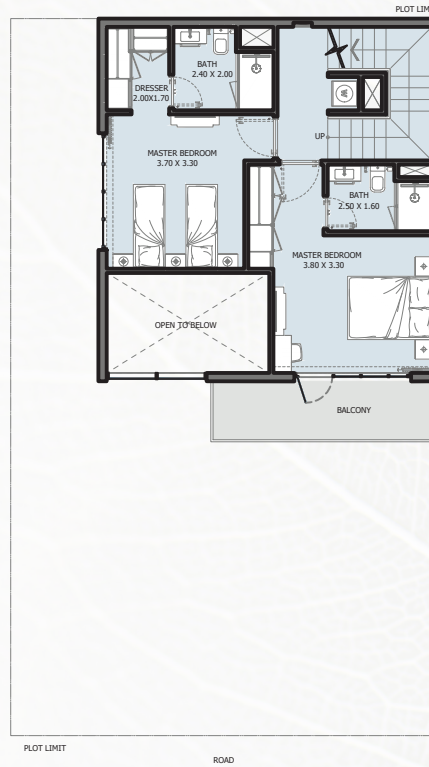
Internal Area	1154.75 sq.ft
Outdoor Area	1561.87 to 1081.23 sq.ft
Total Area	1716.62 to 2235.98 sq.ft

3B | Townhouse

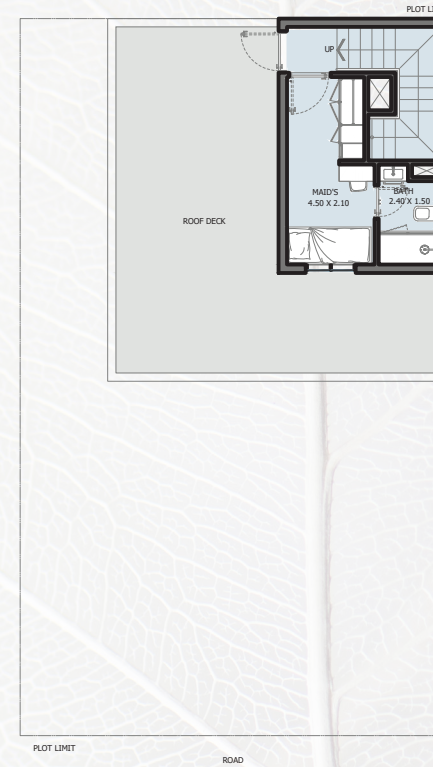
TYPE A



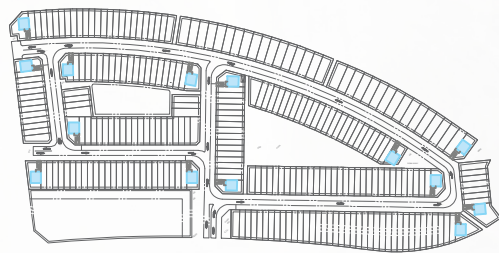
GROUND FLOOR



1ST FLOOR



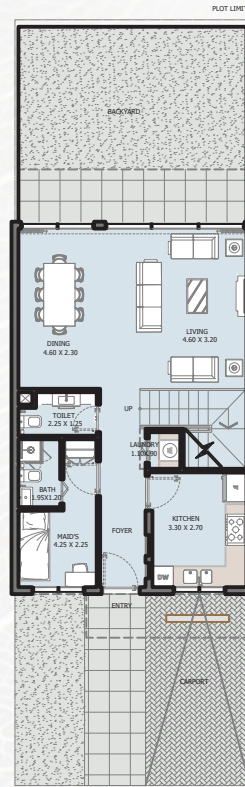
2ND FLOOR



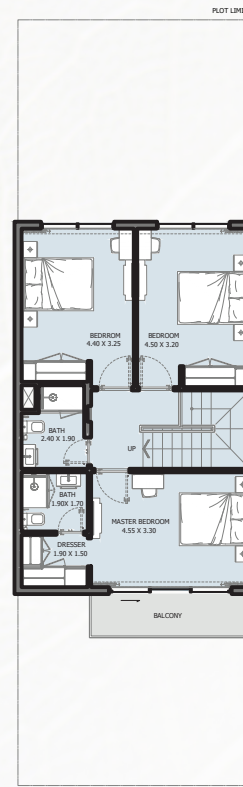
Internal Area	1647.85 sq.ft
Outdoor Area	1781.64 to 3337.13 sq.ft
Total Area	3429.48 to 4984.97 sq.ft

3B | Townhouse

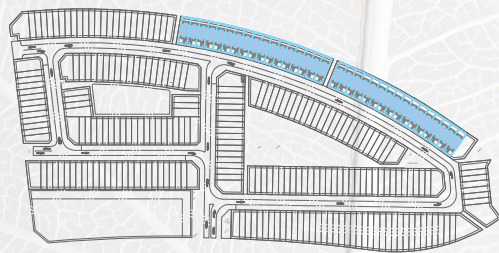
TYPE B



GROUND FLOOR



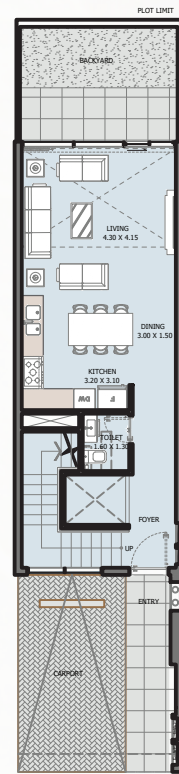
1ST FLOOR



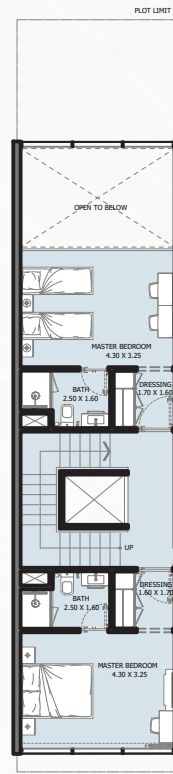
Internal Area	1550.32 sq.ft
Outdoor Area	920.74 to 1369.59 sq.ft
Total Area	2471.06 to 2919.92 sq.ft

4B | Townhouse

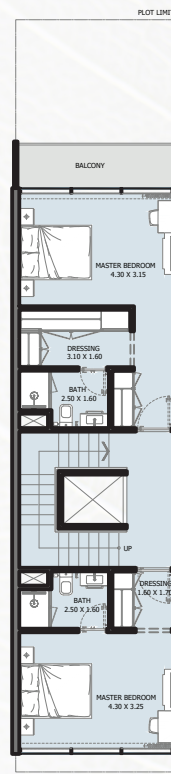
TYPE A



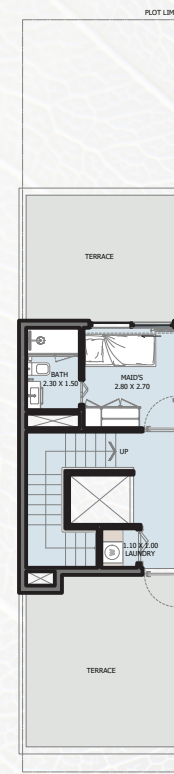
GROUND FLOOR



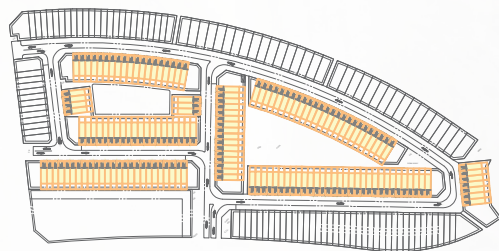
1ST FLOOR



2ND FLOOR



3RD FLOOR



Internal Area	2292.50 sq.ft
Outdoor Area	957.98 to 1866.35 sq.ft
Total Area	3250.48 to 4158.84 sq.ft

ريپورتاج العقارية

Reportage.

Properties

Abu Dhabi-UAE | Head Office

Tamouh Tower
28th Floor, Al Reem Island
P.O. Box: 111949
Tollfree: +971 800 77 55 2
info@reportageuae.com

Dubai-UAE

Anantara Business Tower
3rd Floor, Business Bay
P.O. Box: 27446
Tollfree: +971 800 77 55 2
info@reportageuae.com

Cairo-Egypt

Building 217
North Teseen St.
New Cairo
T: +20 12 0008 1190
info@reportageeg.com

Istanbul-Türkiye

Maslak Mh. Sümer Sk.
No:4, İç Kapı No:3, Bodrum Kat,
Maslak Office Building (MOB) Sarıyer
T: +90 530 774 9595
info@reportage.com.tr

Riyadh-KSA

Building No. 3230
Al Aflaj St., Al Suwaidi
P.O. Box 12791
T: +966 11 215 1110
info@reportageuae.com

Moscow-Russia

Yefremova Street 10s1, k4/4
bld sadovye kvartaly
P.O. Box 119048
info@reportagerussia.com

Kampala, Uganda

Plot 4, Philip Road
Near German Embassy
Kololo, Kampala, Uganda
+256 756 111 434 | +256 763 331 572
info@reportageug.com

Lahore - Pakistan

Plaza No. 185, Broadway
Commercial phase 8, DHA Lahore
+923309991111
Info@reportageempire.com

Kigali, Rwanda

KG 334 ST 10, Nyarutarama,
Kigali, Rwanda
+250738532168 | +250794100607
info@reportagerw.com

For more information, visit reportageuae.com
or call 800 77 55 2 | +971 50 244 1078



Legal Disclaimer:

The information contained in this brochure is confidential and is for the exclusive use of the recipient. This brochure may not be reproduced, distributed, delivered, or furnished to any person without the prior written approval of Reportage Properties. No representation or warranty (expressed or implied) is made or can be given with respect to the accuracy or completeness of the information herein, or that any future offer of units or apartments in the project will conform to the terms described herein. Nothing in this leaflet should be construed as financial, legal, tax or regulatory advice. All accessories such as electronics, furniture, white goods, decorative elements and so forth included in this brochure are not part of the standard unit and used for illustration purposes only. All plans, layouts, pictures, renderings, information and details included in this brochure are indicative only and may change at any time up to the final 'as built' status in accordance with final designs of the project and regulatory approvals and planning permissions.

R.